

Bi-Monthly Newsletter

OCTOBER - NOVEMBER 2023

IN THIS ISSUE:

- BMCHS Service Awards
- Announcements & Events
- Faculty Appointments & Promotions
- Department Updates
- In The Media
- Climate Corner
- Community Resources



TABLE OF CONTENTS

Announcements and Events	3
Faculty Appointments and Promotions	12
Department Updates	14
In the Media	25
Climate Corner	26
Staff and Community Resources	28

We are rewriting healthcare, together

At BMC, healthcare means more. From cutting-edge treatments to rooftop farms, we provide innovative and equitable care that empowers all patients to truly thrive.

[Learn more about us](#) →

BMC, 2023

THANK YOU FOR YOUR SERVICE!

<i>NAME</i>	<i>YEARS OF SERVICE</i>
ISABEL FIERRO-KILFOYLE	35
DAWN ANGELINI	30
SARAH MCCOY	30
MARTHA VIBBERT	25
B. JEANNE HORNER	25
ANDREA WEISS	20
JENNIE GOULD	20
CAROLINE ONYIRIUKA	20
EDWIGE BERROUET	15
KELLY FOURNIER	15
LOVERN MOSELEY	10
NATALIJA BOGDANOVIC	10

THANK YOU FOR YOUR SERVICE!

<i>NAME</i>	<i>YEARS OF SERVICE</i>
NANCY CROUSE	10
KIM PHAN	10
MICHAEL SIENA	10
CHRISTINE AYOUNG	5
ELIZABETH DARKO	5
STACY NORMAND-LINAN	5
CARA FUCHS	5
KEVIN DONNELLY-BOYLEN	5
DANIELLE WALKER	5
MICHELLE LIMA	5
MEDDY MUGALU	5
MARGARET RUHIU	5

THANK YOU FOR YOUR SERVICE!

<i>NAME</i>	<i>YEARS OF SERVICE</i>
PITER JULES	5
NIVEA ORTIZ-AMARO	5
BETH MARX	5
ARLAN EATMAN	5
DORICE NELSON-GRIFFITH	5
RACHEL DAWS	5
STEVEN MONTEIRO	5
SHARIFA GREEN	5



BMCHS

2023

SERVICE AWARDS



SPONSORED BY THE DIVERSITY, EQUITY, & INCLUSION
COMMITTEE OF THE DEPARTMENT OF PSYCHIATRY

GATHERING CIRCLE

FRIDAY,

REGISTER HERE

NOVEMBER 3

12-1PM



FACILITATED BY DR. KIM NGHIEM



"THE CIRCLE STARTED AROUND THE COOK-FIRES OF HUMANITY'S ANCESTORS AND HAS ACCOMPANIED US EVER SINCE. WE REMEMBER THIS SPACE. WHEN WE LISTEN, WE SPEAK MORE THOUGHTFULLY."

CHRISTINA BALDWIN, AUTHOR, THE CIRCLE WAY

THE PURPOSE OF THIS GATHERING CIRCLE IS TO OFFER A SPACE FOR COMING TOGETHER TO SHARE THOUGHTS AND FEELINGS TO THE VARIOUS TRAUMAS OF OUR TIMES, INCLUDING THE RECENT TRAGIC EVENTS IN ISRAEL AND PALESTINE.

THIS CIRCLE IS A SPACE THAT IS OPEN TO EVERYONE SEEKING SUPPORT IN COMMUNITY.

GLOBAL MENTAL HEALTH CONFERENCE



The National Institute of Mental Health, Grand Challenges Canada, Wellcome, and the International Alliance of Mental Health Research Funders are co-sponsoring the **12th Global Mental Health Research without Borders Conference**. This event will bring together researchers, innovators, and other scholars from around the globe to highlight findings from cutting-edge science and explore new opportunities for groundbreaking research

Seven research tracks will include:

Precision Psychiatry/stratification in mental health research

Climate change and mental health

Youth mental health and wellbeing

Data science, data sharing, common data elements

Decolonization of global mental health

Suicide prevention

Innovations in implementation science

Dates: October 30 - November 1

Location: Bethesda, MD and Online

For more information and to register, please visit the conference [website](#).

6TH AGMHI CONFERENCE IN SOUTH AFRICA



6TH AFRICAN DIASPORA GLOBAL MENTAL HEALTH CONFERENCE:

MENTAL HEALTH IMPACT OF
CLIMATE CHANGE &
ENVIRONMENTAL STRESSORS

18-19 NOV 2023

MARRIOTT HOTEL CRYSTAL
TOWERS | CAPE TOWN,
SOUTH AFRICA

 WWW.AGMHI.ORG

 @_AGMHI

 AGMHI@UKZN.AC.ZA

The **6th African Diaspora Global Mental Health Conference** brings together notable psychiatrists and mental health professionals from around the world to address ongoing global mental health challenges and to accelerate the development of solutions for Africa and the diaspora.

[Click here](#) for more information about the **Africa Global Mental Health Institute**.

This conference precedes the 21st National Congress of the **South African Society of Psychiatrists occurring from 19-23 Nov. at the Century City Conference Centre. [Click here](#) for more on SASOP.*



FIRST ANNUAL GC-TS CONFERENCE

#GCTS2023



GC-TS 2023 First Global Collaboration on Traumatic Stress Conference

Cape Town
South Africa

SAVE THE DATE

12-14 December 2023

Program

The first **Global Collaboration on Traumatic Stress Conference** will be held in Cape Town, South Africa this December! The conference will cover all GC-TS themes, including (cross-cultural) assessment, prevention and treatment of traumatic stress, and will feature renowned international speakers such as Prof. Dr. Debra Kaysen, Prof. Dr. Monique Pfalz, Dr. Rachel Langevin, Prof. Dr. Denise Hien, Prof. Dr. Ulrich Schnyder and Prof. Dr. Miranda Olf, as well as speakers from the region.

Date: December 12 - 14

Location: Cape Town, South Africa

For more information, and to register, please visit the conference [website](#).

CLIMATE AND HEALTH ANNUAL MEETING

The Medical Society Consortium on Climate and Health will host its 7th Annual Meeting in-person in Arlington, VA and virtually on **February 11-12, 2024**, with in-person visits to Congress on February 13.

In this pivotal year for climate action, they're joining forces with new partners to make this the preeminent event for climate and health advocacy, research, and education.

Early bird pricing will be available. [Sign up for their list to get notified when registration opens](#) and check back here in October 2023 for more details.



CONGRATULATIONS



Johanna Thompson-Hollands, PhD was promoted to Associate Professor.



Amy Yule, MD was promoted to Associate Professor.



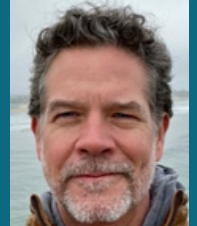
Maithri Ameresekere, MD, MSc was appointed as Clinical Associate Professor.



Joseph DeGutis, PhD was appointed as Adjunct Associate Professor.



Robert Irvin, MD was appointed as Assistant Professor



Nkechi Conteh, MD was appointed as Assistant Professor.



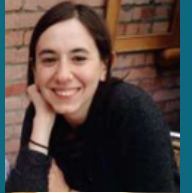
Boston University Chobanian & Avedisian School of Medicine



CONGRATULATIONS



Ana Vallejo-Sefair, PhD was appointed as Assistant Professor.



Erin Hisey, PhD, MSPH was appointed as Instructor.



Michele Casoli-Reardon, MD was appointed as Instructor.



*Do you have questions about Faculty Appointments and Promotions?
Please contact Anne Thompson for additional information or visit
<https://www.bumc.bu.edu/provost/ap/appforms/>*



**BOSTON
UNIVERSITY**

Boston University Chobanian & Avedisian School of Medicine

**BOSTON
MEDICAL**
CENTER

DEPARTMENT UPDATES

Boston Medical Center's Department of Psychiatry recently signed a Memorandum of Understanding (MOU) with **Cheikh Anta DIOP University of Dakar (UCAD), Senegal**, that formalizes a bidirectional relationship between the two institutions.



**UNIVERSITE
CHEIKH ANTA DIOP
DE DAKAR**

The scope of this relationship will include:

- Promotion of institutional exchanges by inviting staff and trainees of the other institution to participate in a variety of teaching and/or research activities and professional development
- Carrying out joint research and continuing educational programs
- Exchanging information pertaining to development in teaching, trainee and faculty development, and research at each institution.

We are delighted to begin this formal partnership with our Senegalese colleagues and look forward to keeping you all updated as things progress.



We are thrilled to welcome **Dr. Racky Wade, MD, PhD**, psychiatrist and neuroanatomist, who is joining us from UCAD as a part of the faculty-staff study stay program. During her visit, Dr. Wade-Kane will meet with various faculty and trainees in the department to exchange knowledge and expertise in the fields of schizophrenia, global mental health, and health leadership. Dr. Wade-Kane's proficiency in these fields will very much benefit our institution as our patient population comes from a diverse community of immigrants, refugees, and ethnic groups. After this first line of research on the socio-cultural aspects of psychiatric disorders, she is also interested in precision psychiatry. Thus her second axis of research is about the early determination of neuroanatomical brain criteria during schizophrenia for the identification of high-risk individuals and also help with diagnostic orientation, follow-up and prognosis of this disorder. Dr. Wade-Kane will be visiting with us in Boston from 27 October to 15 November. Welcome, Dr. Wade-Kane!

DEPARTMENT UPDATES



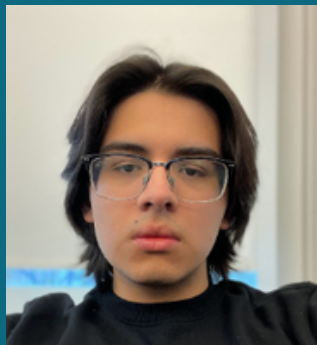
Jori Berger-Greenstein, PhD has joined the residency faculty in the Department of Family Medicine as the Behavioral Science Faculty Director.



Zoey Goldberg, Research Assistant and TAP Study and Clinical Coordinator for the RESTORE Center, was recently awarded the Editors' Choice Award for her article, "[A meta-analytic investigation of cognitive remediation for mood disorders; Efficacy and the role of study quality, sample and treatment factors](#)," published in Volume 330 of *Journal of Affective Disorders*.



Sierra Jamal-Muhammad has joined the Dowling Outpatient Psychiatry Clinic as Team Lead.



Caleb Herrera, Northeastern University Student Co-Op, has joined the Department of Psychiatry providing support to the Administrative and Operations Teams.



Danielle Walker, NP recently published her article, "[Physical and Mental Health Outcomes of Black Emerging Adults with Community Violence Exposure: An Integrative Review](#)," in *Trauma Violence, & Abuse*.

DEPARTMENT UPDATES



Lovern Moseley, PhD presented as a Keynote speaker at the “Health, Wealth, and Career Success” event on September 15th, which was held at the Record Co. at 960 Massachusetts Avenue. This session formed a part of the Greater Boston Chamber of Commerce’s 6th Annual Fierce Urgency of Now Festival, which was held from September 12-16.

With dozens of events hosted by organizations and businesses across greater Boston, this festival serves as a hub for education on social happenings, the exchange of ideas, the consumption of culture, and the gathering of leaders. Through meaningful connections, the festival’s main mission is to increase the social capital among young professionals and professionals of color, support efforts to have a talented and diverse workforce and celebrate the region’s cultural diversity.

(GBCC, 2023)

DEPARTMENT UPDATES



Elizabeth Alpert, PhD, Instructor of Psychiatry and Advanced Psychology Fellow, recently published three papers: 1) [A systematic review of literature examining mediators and mechanisms of change in empirically supported treatments for PTSD](#), in *Clinical Psychology Review*, with Department of Psychiatry co-authors **Denise Sloan, PhD** and **Daniel Lee, PhD**; 2) [Examining emotional processing theory and predictors of outcome in prolonged exposure for PTSD](#), in *Behavior Research and Therapy*; 3) [Psychiatric issues in women veterans](#), in *Psychiatric Clinics of North America*, with Department of Psychiatry coauthors **Tara Galovski, PhD** and **Allison Baier, PhD**.



The Addiction Psychiatry Treatment Program (AOTP) would like to welcome our new Nurse Care Manager, promotions, and transitions, **Melissa Justal, RN!** Melissa comes to AOTP after working as a nurse on the inpatient floors at BMC. Beyond being a resource for AOTP patients, Melissa can also provide services to any patient within the Dowling outpatient clinic such as long-acting injectable medications for addiction treatment (such as Sublocade and Vivitrol), harm reduction supplies and education, or additional check-in visits for patients who are prescribed medications for their substance use disorder by a provider within the outpatient clinic. If you have a patient that would benefit from these services, reach out to Melissa via inBasket message.

DEPARTMENT UPDATES

On August 30th, we welcomed **Peggy Brandon** for her lecture, "Tapping into Intergenerational Dutch Colonial and Slavery Narratives"

Peggy Brandon, the Chief Curator and Coordinator for the new National Slavery Museum in Amsterdam, Netherlands was invited as a Guest Lecturer to Boston University Medical School, Department of Psychiatry by **Dr. Linda Marc**, the Associate Vice Chair of Research in the Department of Psychiatry.

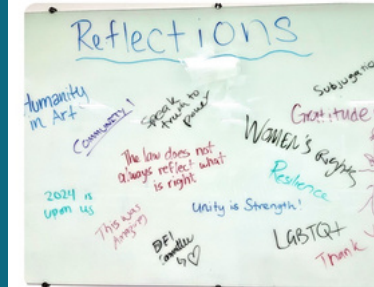


Brandon has been appointed by the municipality of Amsterdam, and the Ministry of Education, Culture and Science, and gives lectures throughout the Dutch European and Caribbean territories on the subject matter. Brandon Discussed the museum's content that will target a broad audience, with a focus on art, education, information, and research. The National Slavery Museum will document the history of transatlantic slavery, and slavery in the Dutch colonies in the Indian Ocean. A key focus for Brandon in creating the content is to better understand how insert-generational narratives have been stored, and how the effects of intergenerational enslavement have impacted descendants.

DEPARTMENT UPDATES

The **Diversity, Equity, and Inclusion (DEI) Committee** recently hosted Grand Rounds in the form of an Experiential Museum on September 28th, 2023.

The attendees participated in a multi-sensory and immersive experience in an engaging environment. This Interactive learning activity allowed participants to meaningfully intersect with a variety of images, poetry, sound, music, and videos around the themes of disparities within the healthcare system, as well as ways of maintaining resilience; all through the lens of Diversity, Equity, and Inclusion. This stimulating immersive experience aimed to get individuals to rethink and provoke thoughts of new perspectives about ourselves, and the systems within which we are embedded.



PIC•COLLAGE

DEPARTMENT UPDATES



PSYCHIATRY FALL GATHERING @ DBC!



DEPARTMENT UPDATES



Global Mindset. Local Relevance.

The **Global & Local Center for Mental Health Disparities** at BMC and BU seeks to improve the mental health of our diverse global communities, both locally in the greater Boston area and internationally.

They are engaged in clinical, research, and training & education initiatives in more than 15 countries through collaborative, interdisciplinary, bidirectional partnerships with local experts and academic institutions.

To sign up for the GLCMHD newsletter, please click [here](#).

For more information, please contact globallocalcenter@bmc.org.



Center for Young Colorful Minds

Updates



Boys and Girls Club Mentoring:

Starting September 18th, CYCM will be meeting with teens at the Boys and Girls Club Mattapan Teen Center on Mondays and Fridays from 4-6pm. This will provide trainees and medical students an opportunity to engage with youth in the community as well as allow youth to learn more about what it's like being a student or a mental health trainee. Please note that this opportunity is also available to anyone in the department! If you're interested in participating, please scan the QR code to sign up!



Contribute content to the CYCM website!

We're currently looking for more volunteers to create content about various youth mental health topics for the CYCM website. If you're interested in contributing to the website or have an interest in learning more about web design, please complete this form which can be found after scanning this QR code!



PATIENTS WITH REFRACTORY DEPRESSION?

REFER TO

TMS

BOSTON
MEDICAL
CENTER



BMC's TMS clinic is dedicated to the care of patients who struggle with depression, particularly treatment-resistant depression. To be eligible for TMS, patients must:

- 1) Be 18 years of age or older**
- 2) Have failed or experienced intolerable side effects to at least **FOUR** antidepressant trials**
- 3) Have a referring clinician who follows them longitudinally for routine psychiatric care**

REFERRALS CAN BE MADE **VIA EPIC** BY PLACING AN ORDER FOR **"TMS"**.



TMS@BMC.ORG



617-414-2361

IN THE MEDIA

In the last year, we have had **over 90 mentions** of BU/BMC Psychiatry faculty and staff in various media outlets!

Please visit the [BUMC Department of Psychiatry website](#) for a complete list of all media features, and click on each photo below for staff and faculty profiles.



Boston University Chobanian & Avedisian School of Medicine



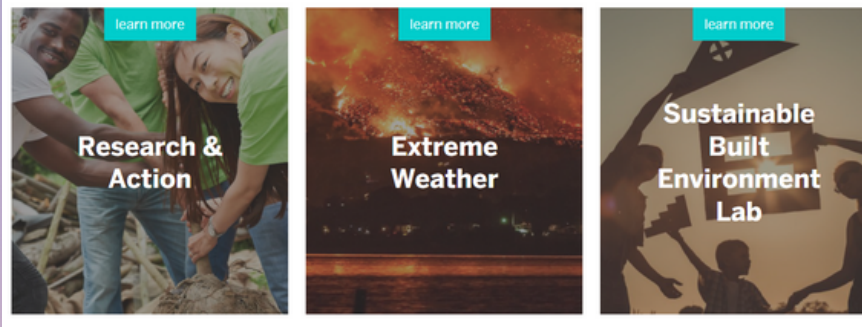
Climate Corner

In the Climate Corner, you will find resources that will help you learn more about what climate change is, how climate change affects health (and mental health), who is more affected by climate change, and what we can do to help in our daily practice both in the workplace and at home.

CENTER FOR CLIMATE AND HEALTH

Launched in 2022, the Center for Climate and Health (CCH) has the broad goal of fostering a diverse and vibrant community of researchers passionate about informing and minimizing the impacts of climate change on the health of people and communities.

We seek to better understand and advance:



Do you have an interest in climate and mental health?

Please visit the **BUSPH Center for Climate and Health**

[website](#) to learn about ongoing research projects, action, and more, including current projects on the impacts of climate change on mental health outcomes.

Recent Climate and Health Media featuring BUMC Faculty

Amruta Nori-Sarma, PhD; Assistant Professor of Environmental Health

[Why You Feel Grouchy on Super Hot Days](#) (Vox)

[The Extreme Heat May be Getting to Your Head](#) (New York Times)

Amelia Wesselink, PhD; Research Assistant Professor of Epidemiology

[Does Heat Cause Miscarriages? A Novel Study Seeks to Find Out](#) (Science)

Greg Wellenius, ScD; Professor of Environmental Health

['Silent Killer': Experts Warn of Record US Deaths from Extreme Heat](#) (The Guardian)

BU School of Public Health's Center for Climate and Health

[As the Climate Changes, How Doctors Treat Patients, and Medical Program Curricula, are Evolving](#) (Associated Press)

Climate Corner

CLIMATE AND HEALTH RESOURCE HUB

Check out these clickable resources for more information and educational tools. Know of some additional websites that you'd like to share? We would love to hear from you!

Columbia University Global Consortium on Climate and Health Education

American Public Health Association's Center for Climate, Health, and Equity



 COLUMBIA | MAILMAN SCHOOL OF PUBLIC HEALTH
GLOBAL CONSORTIUM ON CLIMATE AND HEALTH EDUCATION

Mission

Advancing global health security and educating professionals on the effects of climate change.



AMERICAN PUBLIC HEALTH ASSOCIATION

For science. For action. For health.

The Medical Society Consortium on Climate and Health



How our health is harmed by climate change

LEARN MORE

STAFF AND COMMUNITY RESOURCES

Did you know that BMC has a list of community resources for patients and staff? Please visit the **BMC Community Resources** page [here](#).

BMC Chaplains are available to support patients, staff, and loved ones at BMC. If you would like to speak with a Chaplain, please call 617-414-4299. *Chaplains provide spiritual companionship for those of all traditions and those with no religious affiliation.*

BMC Healing Pups can be requested for a "Ruff-eral" by calling Patient Advocacy (617-414-4970) or by emailing DG-PatientAdvocacy. Requests can generally be fulfilled within 24 hours although, on occasion, it can take longer.





Want to see your program, news, or updates featured in our bi-monthly newsletter?

*Contact **Anne Thompson** to find out more!
Please include your name, title, and program in your message.*

We look forward to hearing from you!