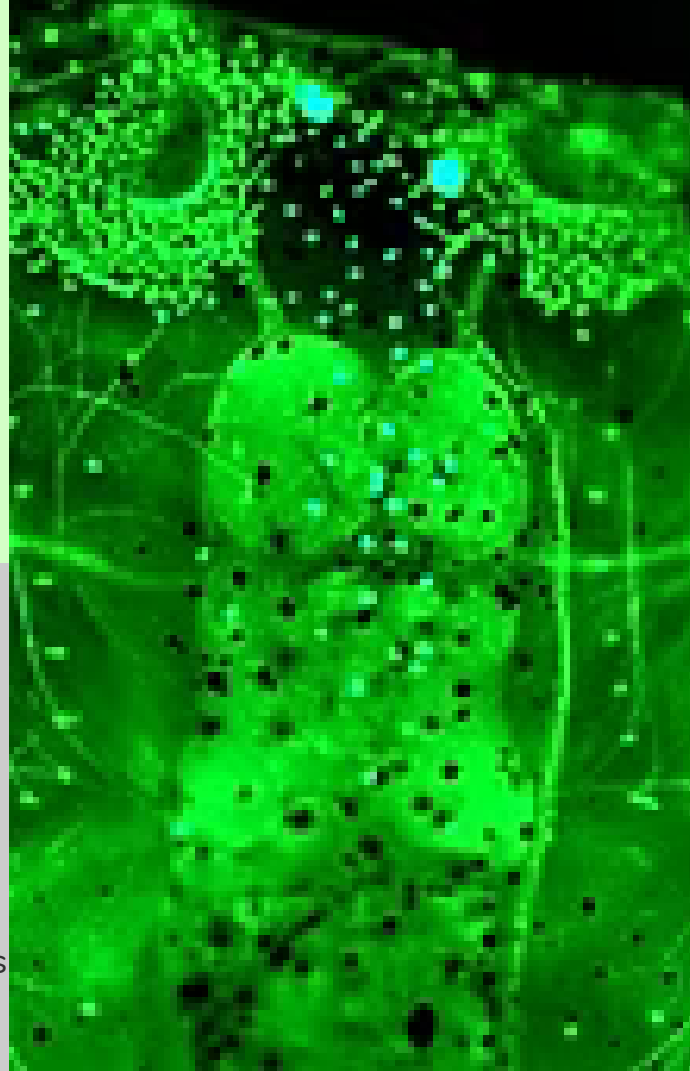


# Get to Know the Lowery Lab

One primary focus of the Lowery Lab research is to investigate how cytoskeletal dynamics are regulated to drive cell motility in both normal and pathological conditions.

The Lowery Lab uses this research focus as a platform to further the understanding of the cell biological defects that underlie neurodevelopmental disorders, various developmental disorders affecting other organ systems, as well as cancer metastasis, using *Xenopus laevis* as a model system.



The Lowery Lab has been located at the Boston Medical Center in the Section of Hematology and Medical Oncology within the Department of Medicine at Boston University since 2020, and Laura Lowery, PhD is currently an Associate Professor at Boston University. Prior to that, the lab was located at Boston College (2014-2019). Laura is also the Section's Associate Chief for Faculty Affairs and the Equity and Belonging Committee Chair.

The Lowery Lab aims to create a safe space for all members of this community to learn, grow, and succeed in their life goals, and we are committed to promoting diversity, equity, and inclusion in the sciences. We welcome and celebrate individuals of all races, ethnicities, social backgrounds, religion, gender, sex, age, disability, sexual orientation, veteran status, and national origin.

[The Lowery Lab Website](#)