

# Section of Hematology and Medical Oncology Newsletter



## In This Issue:

Publications: 2  
New Faculty: 3-4  
Meet Our New Fellows: 5  
Faculty & Staff Recognition Winners: 6  
Call for APP Council & BMC Committees: 7  
Call for BUMG Committees & Councils: 8  
C8 Health Training Reminder: 9  
BU Wellness Resources: 10-11  
New Observership Submission Form: 12  
Faculty & Staff Recognition Award: 13  
Upcoming Events/Social Media: 14



Ruben and Kim are now proud parents (again)! Their daughters, Ella and Sue, were born on June 6th. Both babies are doing great, and while Kim is taking some time to recover, everyone is healthy and in good spirits. Please join us in congratulating Ruben and Kim!

# Publications



Martin H. Steinberg, MD

**Martin H. Steinberg, MD** and others authored the paper, "Mean Corpuscular Hemoglobin Modulates HbF/F-Cell and Clinical Response to Gene Therapy and Hydroxyurea in Sickle Cell Disease". This paper models the distribution of HbF in F-cells after treatment with hydroxyurea or gene therapy where similarly high HbF levels were achieved, and hypothesizes that this is a result of stress erythropoiesis and different mean corpuscular hemoglobin levels.

Steinberg, M. H. (2025). Mean corpuscular hemoglobin modulates HbF, F-cell, and clinical response to gene therapy for sickle cell disease. American Journal of Hematology.

<https://www.bu.edu/articles/2025/what-does-bidens-cancer-diagnosis-mean/>.



Rubeun Dries, PhD

The Dries lab's work has been featured in the new 'Single Cell & Spatial Buyer's guide'. This guide can be downloaded for free using this link:

[https://lp.frontlinegenomics.com/report-single-cell-spatial-buyers-guide-2025?hs\\_preview=ZRkYdbZm-190804717644](https://lp.frontlinegenomics.com/report-single-cell-spatial-buyers-guide-2025?hs_preview=ZRkYdbZm-190804717644)

# New Faculty



Taylor Clancy BSN, RN, NP has started in the section of hematology and medical oncology as a nurse practitioner in our hematology and hematologic malignancies program as of June 2nd. Taylor is a graduate of University of Massachusetts - Boston with a Master of Science in Nursing. She holds a Bachelor of Science in Health Science from Boston University and a Bachelor of Science in Nursing from University of Massachusetts - Boston. Taylor completed her clinical rotations in Primary Care at Boston Medical Center. She has 15 years of nursing experience, focused in emergency medicine, and she was an ER Clinical Nurse Leader at Carney Hospital until its closure. She is passionate about caring for diverse patient populations in the urban and community setting.



Micaela Rogal, PA-C, MPAS, has accepted an offer to join Hematology and Medical Oncology. Micaela will be supporting the sickle cell and Cell Therapy programs. She received a Bachelor of Science degree in clinical laboratory science from the University of Massachusetts at Lowell. She subsequently received a Master of Physician Assistant Studies from the Massachusetts College of Pharmacy and Health Sciences.

# New Faculty



Emily McClure, DNP, RN, has accepted an offer to join the Section of Hematology and Medical Oncology as Nurse Practitioner starting in January 2026. Emily will be supporting the solid tumor malignancies program. Emily joins us with 8 years of oncology nursing experience from various institutions, most recently Brigham and Women's Hospital. Her experience includes inpatient oncology care, clinical trial work, and outpatient radiation care. She grew up in Michigan and received her undergraduate and graduate degrees at Boston College.



Sandip Patel, JD, PA-C, has verbally accepted an offer to join Hematology and Medical Oncology as a Physician Assistant starting November 1, 2025. Sandip will be supporting the solid tumor malignancies program. He holds a J.D. from the University of Minnesota and a B.A. from Bowdoin College. He completed his Master of Science from Northeastern University in August 2024 and has trained across multiple specialties, including surgery, oncology, and emergency medicine.



Alex Lazzaro MD MBA will be starting as a hospitalist in July. Alex is currently completing his senior residency at BU in internal medicine and has an interest in pursuing a fellowship in medical oncology.



# Meet Our New Fellows

## Meet Our New Fellows

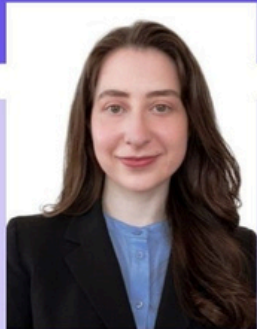


**Caroline Johnson, MD**

*HemOnc Fellow*

**Alexander Bulteel, MD**

*HemOnc Fellow*



**Jordan Edgren, MD**

*HemOnc Fellow*

**Natalie Perez-Mendez, MD**

*Geriatrics-Oncology Fellow*



# HemOnc Faculty & Staff Recognition Award Winners

## HEMATOLOGY & MEDICAL ONCOLOGY *Faculty & Staff Recognition Award Winners*



*Lillian McMahon, MD  
Faculty Award Winner*

&



*Crystal Pike  
Staff Award Winner*

# FY26 Open Call for APP Council & BMC Committees

The APP Council and several BMC Committees are seeking new APP members for FY26, effective October 1, 2025. Seats are open to BMC or BUMG-employed APPs. We encourage all interested APPs to consider applying for this.

BUMG and BMC value all faculty and embrace diversity at all levels of the organization. We are committed to building and sustaining an equitable and inclusive community that values diversity of gender, race/ethnicity, and academic rank in all departments, sections, and committees/councils. We know diverse committee/council membership is essential to deliver on our mission and at BUMG our diverse experiences, skills, and backgrounds advance our thinking and innovation.

Committee/Council	Purpose	Meeting Days/Times	Committee Chair
<a href="#">APP Council</a>	Promote, develop and support the roles of APPs	12:00PM-1:00PM, third Thursday of the month	Ludwine Paul

In addition to the APP Council, BUMG and BMC APPs are welcome to apply to the following BMC Committees

- Blood Transfusion Committee
- Code Committee
- Institutional Review Board (IRB)
- Hospital Acquired Infection Committee
- Nutrition Committee
- Policy & Procedure Committee

The minimum time commitment for APP Council membership is one (1) hour each month for meetings. Members may serve no more than two (2) consecutive three-year (3) terms. BMC Committee time commitments and terms may vary.

To apply to the APP Council or any of the BMC Committees, please [click here](#) to submit a brief statement of interest (200 words or less) and your current CV by Wednesday, June 30th.

If you have any questions, please contact [Michael Halas](#).

[Click to Apply](#)

# FY26 Open Call for BUMG Committees & Councils

Several BUMG Committees and Councils are seeking new members for FY26, effective October 1, 2025. We encourage all to consider volunteering for one of these committees/councils.

Committee / Council	Purpose	Available Openings	Meeting Days / Times	Committee / Chair
<a href="#"><b>Clinician Equity and Vitality Advisory Council</b></a>	Provides strategic direction to implement initiatives that enhance clinician well-being, support professional advancement, and cultivate an inclusive culture.	Physicians, Other Clinical Faculty	2nd Friday of the month, 12PM-1PM	Susannah Rowe, Heather Edwards and Cassandra Pierre
<a href="#"><b>Engagement Committee</b></a>	Create a sense of community and collegiality through social and recognition activities	Physicians,  Other Clinical Faculty	1st Tuesday of the month, 4:15PM-5:00PM	Elizabeth Sanders
<a href="#"><b>HR &amp; Benefits Committee</b></a>	Serve as an advisory group on benefits and human resource administrative services.	Physicians	2nd Monday, every other month, 10:00AM - 11:00am	Christopher Andry
<a href="#"><b>Professional Development Committee</b></a>	Improve and/or create new resources for professional development	Physicians	2nd Monday of the month, 11:00AM-Noon	Sharmeel Wasan
<a href="#"><b>Work-Life Harmony Committee</b></a>	Improve faculty flexibility to enhance work/life integration.	Department Chair/DoM Section Chief,  Physicians,  Other Clinical Faculty	2nd Wednesday of the month, 12:00PM-1:00PM	Benay Ames

\*Other Clinical Faculty denotes the following degree types: CNM, CRNA, NP, PA-C, PCNS, OD, MS, PhD, and PsyD.

The minimum time commitment is one (1) hour each month for meetings. Members may serve no more than two (2) consecutive three-year (3) terms.

To apply, please [click here](#) to submit a brief statement of interest (200 words or less) and your current CV by Wednesday, June 30th, 2025. You are welcome to apply for more than one committee. If you have any questions, please contact [Michael Halas](#).

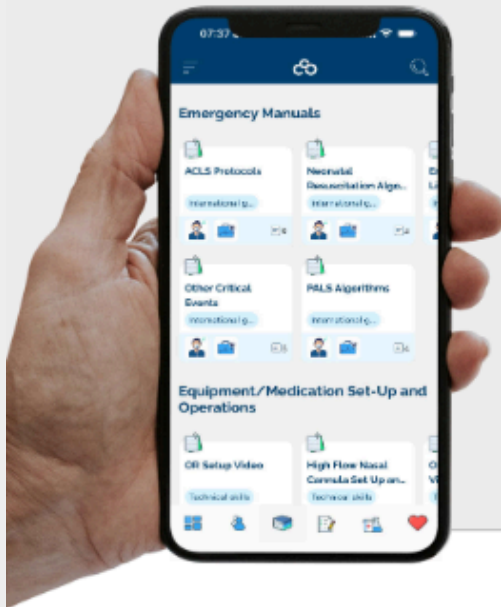


# C8 Health Training Reminder

**BOSTON  
UNIVERSITY**

## Still haven't logged in to C8?

Get quick and easy access to all of your point-of-care knowledge, and enjoy the peace of mind that you work only with locally vetted guidance.



Local Guidelines & Policies

Drug Dosages

International Guidelines

How To's

Web Resources

Videos

Training & Education

Checklists

Fast Access | Powerful Search | Smart Formats  
Locally vetted | Streamlined Communications |  
Usage & Engagement Analytics



Log in to  
**Web app**

[app.c8health.com](http://app.c8health.com)

GET IT ON  
**Google Play**

[bit.ly/3yWpDIN](https://bit.ly/3yWpDIN)

Download on the  
**App Store**

[apple.co/34Bf5jL](https://apple.co/34Bf5jL)



Boston University  
School of Medicine

**BOSTON  
MEDICAL**  
CENTER  
EXCEPTIONAL CARE. WITHOUT EXCEPTION.

# BU Wellness Resources



## Wellness RESOURCES

### Seek Support

- [Wellness Resources for BU Faculty & Staff](#)
- [FitRec](#)
- [Sargent Choice Nutrition Center](#)
- [Meditation and Mindfulness](#)



### Faculty Staff Assistance Office

Find more information [here](#).



### Stay Informed

Find more information about employee wellness support [here](#).





### Family Resources

The Boston University Children's Center provides an educational experience for the children of BU employees.



### Human Resources

If needed, please reach out to the BU HR team [here](#).



### Hematology and Medical Oncology

### DEI Resources

To learn more about the Equity and Belonging Committee or to join please click [here](#).



**BOSTON MEDICAL CENTER**

# Wellness RESOURCES

## Seek Support

- [Mental Health & Addiction Employee Resource Guide](#)
- [Residents & Fellows Mental Health & Addiction Resource Guide](#)
- [BMC Domestic Violence Program](#)

## Employee Resilience Program

Email [resilience@bmc.org](mailto:resilience@bmc.org) or find more information [here](#)

## BIPOC Mental Health Resources

Click [here](#) to find resources specific to support BIPOC mental health

## Stay Informed

To find further resources please visit [here](#) in the Hub.

## Hematology and Medical Oncology DEI Resources

To learn more about the Equity and Belonging Committee or to join please click [here](#).

**BOSTON MEDICAL CENTER**

# New Observership Submission Form

We would like to remind you all of the launch of our new online submission form for Observership applications that is now located on our website. This new system is designed to streamline the application process and make it smoother in the initial stages of onboarding.

Starting today, all observership applications must be submitted through the online form, which can be accessed at:

<https://www.bumc.bu.edu/hematology/observership-requests/>. The form also includes the rules and regulations, which were discussed at our last Section meeting, that were put in place by BMC.

If you have already submitted an application through email, there is no need to reapply using the new form. However, you are encouraged to use the online system for any future applications.



# Faculty & Staff Recognition Award

Call for Nominations!



Do you know someone who has gone above and beyond? Nominate them today and let their efforts be celebrated!

<https://www.bumc.bu.edu/hematology/faculty-staff-awards/>

The section of Hematology & Medical Oncology “Employee Recognition Award” is designed to recognize faculty and staff who work within administration, clinical care and research. This award serves as a means to celebrate excellence, foster a culture of appreciation, and inspire continuous improvement within the departmental community. It is designated for those who have demonstrated outstanding contributions, deliver exceptional service, and go above and beyond their expected duties in the section and the Cancer Center.

# Upcoming Events

## Follow Us on Instagram!

Hematology & Medical Oncology is LIVE on Instagram!  
Follow us at [@BMCHemOnc](https://www.instagram.com/BMCHemOnc)



If you or one of your patients would like to be featured,  
please submit a request at  
<https://www.bumc.bu.edu/hematology/announcement-requests/>

## Available Career Opportunities as of May 2025:

- Clinical Investigator, Gastrointestinal Oncology
- Clinical Investigator, Genitourinary Oncology
- Advanced Practice Provider, Neuro-Oncology and CNS Malignancies
- Director, Ambulatory Medical Director
- Director, Neuro-Oncology Program
- Director, Sickle Cell Program
- Clinical Investigator Hematology/Hematologic Malignancies
- Senior Administrative Coordinator
- Advanced Practice Provider, Stem Cell Program
- Advanced Practice Provider, Hematology and Hematologic Malignancies
- Advanced Practice Provider: Sickle Cell Disease and Hemoglobinopathies
- Physician: Academic Clinical Investigator- Breast Oncology
- Physician: Inpatient Hospitalist