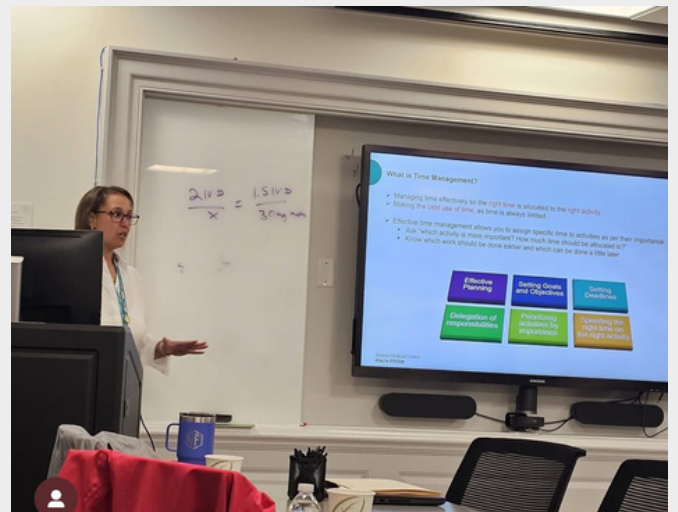


# Section of Hematology and Medical Oncology Newsletter



## In This Issue:

Celebrating our Fellows: 2  
Publications: 3  
Presentations/Awards: 4  
Patient Spotlight Feedback: 5  
BU Wellness Resources: 6-7  
New Observership Submission Form: 8  
Faculty & Staff Recognition Award: 9  
Upcoming Events/Social Media: 10



During Education Week our very own **Nellie Ferrara** taught a workshop to a packed room of GME and non-GME Administrators entitled, "From Chaos to Control: Mastering Time Management".

# Celebrating our Graduating Fellows



Congratulations to our fellows on their upcoming graduation. We were thrilled to celebrate them and their accomplishments.





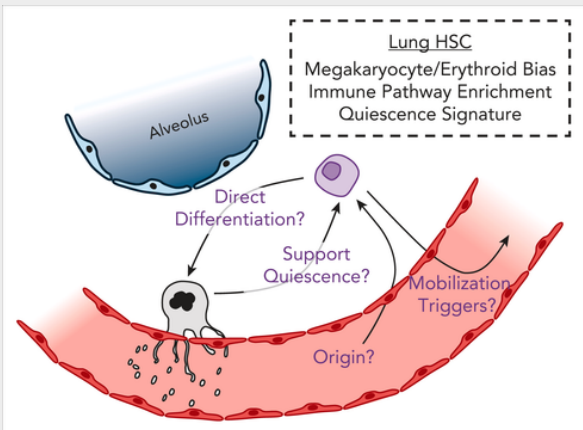
# Publications



Gerald Dennis, PhD

**Gerald Dennis, PhD** was interviewed for a new article in BU Today. The article is titled, "What Does Biden's Cancer Diagnosis Mean?"

Callahan, Molly. "What Does Biden's Cancer Diagnosis Mean?" BU Today, 21 May 2025, <https://www.bu.edu/articles/2025/what-does-bidens-cancer-diagnosis-mean/>.

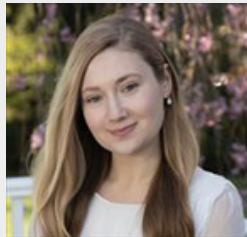


**The Murphy Lab** published a commentary in Blood entitled: Breathing life into the hematopoietic potential of the lung.

Yeung AK, Murphy GJ. Breathing life into the hematopoietic potential of the lung. Blood. 2025 May 1;145(18):1963-1964. doi: 10.1182/blood.2025028548. PMID: 40310663.



Lucas Pereira,  
MGCS, CGC



Maggie Ruderman,  
MS, CGC

**Lucas Pereira and Maggie Ruderman**, in collaboration with other genetic counselors across BU/BMC have just published a professional issues piece, "Addressing language barriers in access to genetic testing under the United States 21st Century Cures Act" in the Journal of Genetic Counseling.

Pereira, L., Connors, P. D., Ruderman, M., Barton, C. M., Anand, G., & Zayhowski, K. (2025). Addressing language barriers in access to genetic testing under the United States 21st Century Cures Act. Journal of Genetic Counseling, 34, e70037. <https://doi.org/10.1002/jgc4.70037>

# Presentations



J. Mark Sloan MD presented the Bove Lecture for the Yale Cancer Grand Rounds. View his full talk discussing Duffy-null phenotype and its clinical significance [here](#).

# Awards



Congratulations to one of our Yawkey 5 Registered Nurses, Kennedy Pagano, who was awarded with a Nurse Excellence Award.

Her nominator Cathy describes her as “never shying away from an emergency situation and an advocate for her patients in many ways”.



# Patient Spotlight Feedback



# BU Wellness Resources



## Wellness RESOURCES

### Seek Support

- [Wellness Resources for BU Faculty & Staff](#)
- [FitRec](#)
- [Sargent Choice Nutrition Center](#)
- [Meditation and Mindfulness](#)



### Faculty Staff Assistance Office

Find more information [here](#).



### Stay Informed

Find more information about employee wellness support [here](#).





### Family Resources

The Boston University Children's Center provides an educational experience for the children of BU employees.



### Human Resources

If needed, please reach out to the BU HR team [here](#).




### Hematology and Medical Oncology DEI Resources

To learn more about the Equity and Belonging Committee or to join please click [here](#).



# BU Wellness Resources




# Wellness

# RESOURCES


## Seek Support

- [Mental Health & Addiction Employee Resource Guide](#)
- [Residents & Fellows Mental Health & Addiction Resource Guide](#)
- [BMC Domestic Violence Program](#)




## Employee Resilience Program

Email [resilience@bmc.org](mailto:resilience@bmc.org) or find more information [here](#)



## Stay Informed

To find further resources please visit [here](#) in the Hub.



**THRIVING**

- Stress response is not activated
- You perceive you have the confidence, talent, and resources to manage the challenges you are facing

**REACTING**


- Stress response becomes activated
- You perceive that you might not have either the resources, the skill set, nor confidence to manage the challenges you are facing
- Experiences mild stress reactions: increased heart rate, shallow breathing, tense muscles

**STRAINING**

- Stress response remains activated even when pressures are not present (ie becomes dysregulated)
- Experiences moderate stress reactions that trigger feelings of excessive guilt, shame, worthlessness
- May experience exhaustion and loss of joy at work


**UNWELL**

- Stress response is chronically dysregulated
- Experiences severe stress reactions that are overwhelming and erode one's time that interacts with your daily functioning




## BIPOC Mental Health Resources


Click [here](#) to find resources specific to support BIPOC mental health




## Hematology and Medical Oncology DEI Resources

To learn more about the Equity and Belonging Committee or to join please click [here](#).







# New Observership Submission Form

We would like to remind you all of the launch of our new online submission form for Observership applications that is now located on our website. This new system is designed to streamline the application process and make it smoother in the initial stages of onboarding.

Starting today, all observership applications must be submitted through the online form, which can be accessed at:

<https://www.bumc.bu.edu/hematology/observership-requests/>. The form also includes the rules and regulations, which were discussed at our last Section meeting, that were put in place by BMC.

If you have already submitted an application through email, there is no need to reapply using the new form. However, you are encouraged to use the online system for any future applications.



# Faculty & Staff Recognition Award

Call for Nominations!



Do you know someone who has gone above and beyond? Nominate them today and let their efforts be celebrated!

<https://www.bumc.bu.edu/hematology/faculty-staff-awards/>

The section of Hematology & Medical Oncology “Employee Recognition Award” is designed to recognize faculty and staff who work within administration, clinical care and research. This award serves as a means to celebrate excellence, foster a culture of appreciation, and inspire continuous improvement within the departmental community. It is designated for those who have demonstrated outstanding contributions, deliver exceptional service, and go above and beyond their expected duties in the section and the Cancer Center.

# Upcoming Events

## Follow Us on Instagram!

Hematology & Medical Oncology is LIVE on Instagram!

Follow us at [@BMCHemOnc](https://www.instagram.com/BMCHemOnc)



If you or one of your patients would like to be featured, please submit a request at

<https://www.bumc.bu.edu/hematology/announcement-requests/>

## Available Career Opportunities as of May 2025:

- Clinical Investigator, Gastrointestinal Oncology
- Clinical Investigator, Genitourinary Oncology
- Advanced Practice Provider, Neuro-Oncology and CNS Malignancies
- Director, Ambulatory Medical Director
- Director, Neuro-Oncology Program
- Director, Sickle Cell Program
- Clinical Investigator Hematology/Hematologic Malignancies
- Senior Administrative Coordinator
- Advanced Practice Provider, Stem Cell Program
- Advanced Practice Provider, Hematology and Hematologic Malignancies
- Advanced Practice Provider: Sickle Cell Disease and Hemoglobinopathies
- Physician: Academic Clinical Investigator- Breast Oncology
- Physician: Inpatient Hospitalist