

Section of Hematology and Medical Oncology Newsletter



In This Issue:

Awards/Publications/Presentations: 2
BMC HemOnc Research Updates: 3
Patient Feedback Spotlight: 4
BUMG Spring Networking Event: 5
DOM Mentoring Career Development: 6
DEIA Week: 7-9
Wellness Recourses: 10-11
New Observership Submission Form: 12
Faculty & Staff Recognition Award: 13
Upcoming Events/Social Media: 14



BMC.org and department pages have been updated to provide a seamless visual and messaging experience that integrates campaign creative and showcases clinical expertise proof points!

Awards



Vaishali Sanchorawala, MD

We are delighted to announce that Dr. Vaishali Sanchorawala has been selected as a recipient of the inaugural BMC Research Excellence Award. The award honors investigators who have had significant impact in their fields. As an international leader in the field of amyloidosis and a mentor to numerous fellows and junior faculty members there is no one more deserving of this honor than Dr. Sanchorawala.

Publications



Naomi Ko, MD



Lauren Oshry, MD

Lauren Oshry, MD, Naomi Ko, MD and others published "Racial discrimination among women seeking breast cancer care".

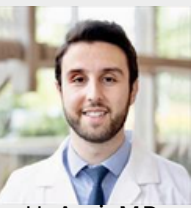
Oshry LJ, Lederman RI, Gagnon H, Fikre T, Gundersen DA, Revette AC, Odai-Afotey A, Kantor O, Hershman DL, Crew KD, Keating NL, Freedman RA, Ko NY. Racial discrimination among women seeking breast cancer care. NPJ Breast Cancer. 2025 Jan 16;11(1):4. doi: 10.1038/s41523-025-00717-y.

Presentations



Umit Tapan, MD presented on Lung Cancer Disparities at the 14th Annual Puerto Rico Oncology Symposium.

BMC HemOnc Research Excellence Society



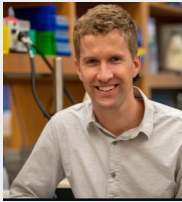
H. Assi, MD



S. Cui, PhD



R. Dries, PhD



E. Hagedorn, PhD



C. Heaphy, PhD



K. Vanuytsel, PhD

We would also like to congratulate some of our faculty members who were selected for induction into the BMC Research Excellence Society in recognition of their research accomplishments.

DOM Researchers Retreat

DOM Researchers Retreat

Computing & Data Sciences Building
17th floor, 655 Comm Ave

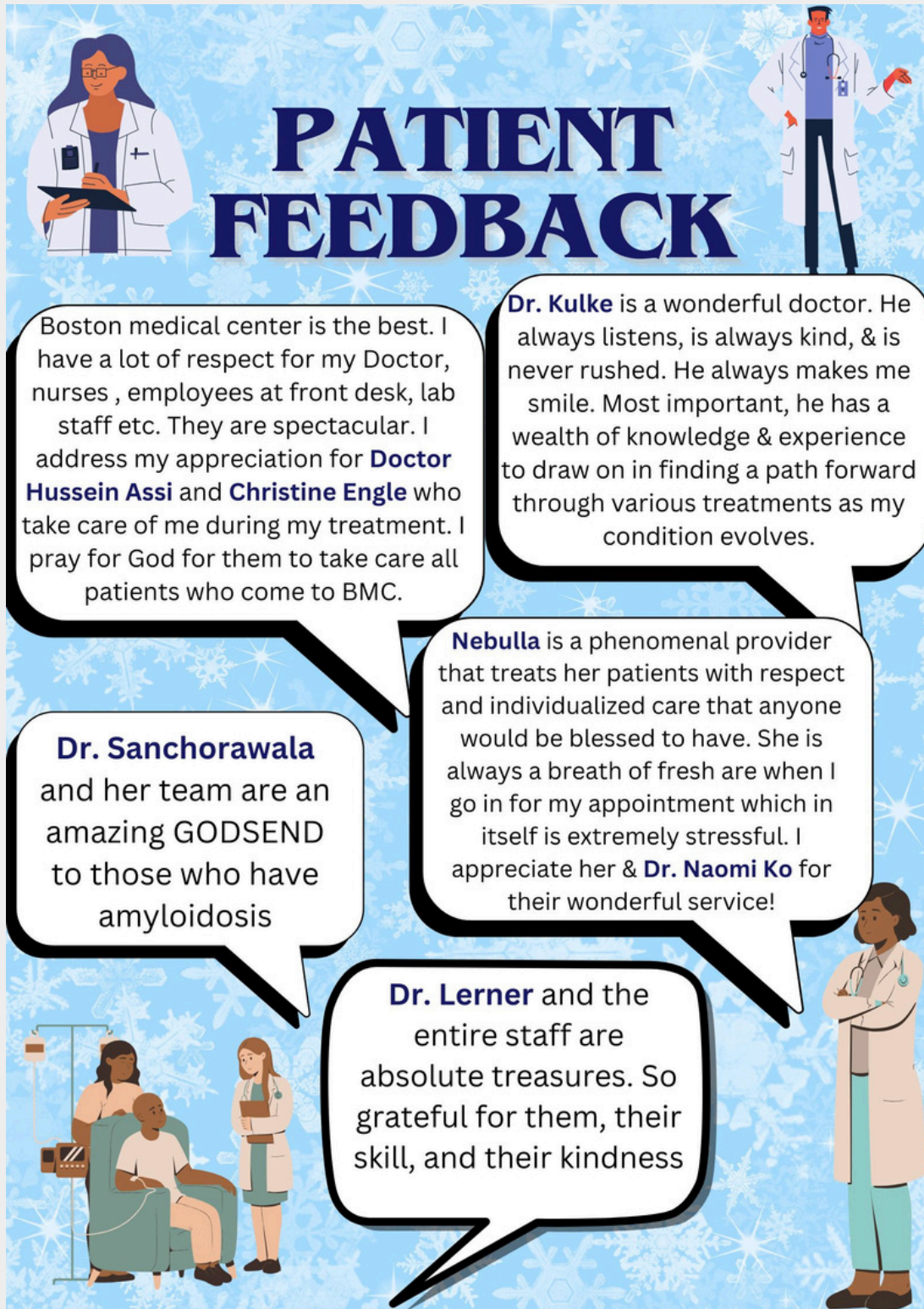
March 28, 2025
9.30am-4pm

Register via QR code or https://bostonu.qualtrics.com/jfe/form/SV_9ow3m3riyxBMjZQ

Where faculty come together to build community
Morning Session (9.30 am – 12.00 pm)

EVANS CENTER
FOR INTERDISCIPLINARY BIOMEDICAL RESEARCH

Patient Spotlight Feedback



BUMG Spring Networking Event

The [Engagement Committee](#) invites you to join your BUMG colleagues for a night of fun and socializing!

BUMG Spring Networking Event

When: March 26, 2025, 5:00 - 7:00 pm

Where: Dona Habana, 811 Massachusetts Avenue, Boston



Scan the QR code to RSVP
or
[Click here](#)

For questions, contact Mike Halas: Michael.Halas@bmc.org

DOM Mentoring & Inclusion Career Development

Department of Medicine Announces

MENTORING & INCLUSION CAREER DEVELOPMENT PROFESSORSHIP

The Mentoring & Inclusion Career Development Professorship is a three-year award recognizing **Assistant Professors in the Chobanian & Avedisian School of Medicine's Department of Medicine** who have **demonstrated leadership in diversity, equity, inclusion, and accessibility (DEIA)** through their **research, teaching, or mentoring**.

Details:

- ~\$50,000/year to support research, teaching, mentoring, and/or scholarly-based projects
- Appointees shall hold the Professorship for a three (3) year period, with one faculty member appointed during each three (3) year period
- Faculty may self-nominate

Eligibility:

- Assistant Professors with Primary Appointment in DoM
- BU or BMC-based faculty eligible

Application materials include:

- BU CV & Profiles link
- 1-page DEIA Faculty Statement
- 1-1.5 page project plan, including budget justification (3-year scope)
- Letter of Support from Section Chief or Mentor

APPLICATIONS DUE APRIL 1ST 2025

For more information, and to apply, please visit our website using the QR code ->



DEIA Week



DEPARTMENT OF MEDICINE DEIA WEEK POSTER SHOWCASE



We invite all Department of Medicine faculty, staff, and trainees to submit their DEIA related work and initiatives to be displayed at our DEIA Week Poster Showcase. If you or your group have been working on DEIA research, education, trainings, programs, patient care initiatives, etc. we want to hear about it!

Poster Submissions that are selected will be invited to present during the Showcase on **March 10th at 11:30AM-1:30PM** (lunch will be served).

*Poster session attendance is not required in order to submit your work for display.

Submissions deadline is February 10, 2025.

What can you submit?

- **Publications** on DEIA topics
- **Abstracts** or **posters** on DEIA research or efforts
- Any DEIA **training** you have developed or given
- **Workshops** you have given or participated in
- New DEIA **Programs** you have worked on or implemented
- **Book clubs** or **discussion series** focused on an aspect of DEIA
- **Educational seminars** your section has sponsored
- DEIA **Committee initiatives** you have spearheaded
- And more!!!!

Scan the code or
[click here](#) to
learn more!



Contact: Nellie Ferrara - Inel.Taggart@bmc.org

DEIA Week

Department of Medicine

Contribute to the DEIA Week Celebration!

The DoM is looking to celebrate our uniquely diverse community. Faculty, staff, and trainees are encouraged to participate in the DoM DEIA Week Celebration by:

- Submitting artwork (e.g., paintings, poetry, etc.)
- Contributing to our multicultural fashion show
- Performing (e.g., dance or musical instrument)

Submission Deadline: Feb. 14, 2025

The celebration will take place on March 13th at 4:30-6:30PM in the Hiebert Lounge.

**[Click here](#) or
scan the code
to learn more!**



Contact: Maria Galatis (Maria.Galatis@BMC.org)

DEIA Week

Monday, March 10

11:30AM-1:30PM
Poster Showcase

Tuesday, March 11

8:00AM-10:30AM
Panel + Discussion
“Molding a Culture:
Turning Intention into
Action”

Wednesday, March 12

11:00AM-3:00PM
Wellness Wednesday

Thursday, March 13

4:30PM-6:30PM
Celebration

Friday, March 14


12:00pm-1:00pm
Grand Rounds

B O S T O N U N I V E R S I T Y



D E P A R T M E N T O F M E D I C I N E


BMC Wellness Resources



Wellness RESOURCES


Seek Support

- [Mental Health & Addiction Employee Resource Guide](#)
- [Residents & Fellows Mental Health & Addiction Resource Guide](#)
- [BMC Domestic Violence Program](#)




Employee Resilience Program

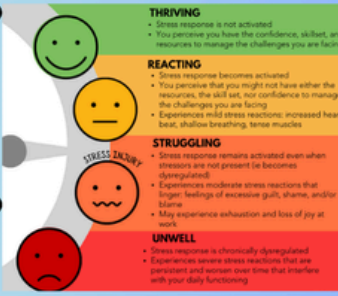
Email resilience@bmc.org or find more information [here](#)




Stay Informed

To find further resources please visit [here](#) in the Hub.






THRIVING	REACTING	STRUGGLING	UNWELL
<ul style="list-style-type: none">• Stress response is not activated• You perceive you have the confidence, skillset, and resources to manage the challenges you are facing	<ul style="list-style-type: none">• Stress response becomes activated• You perceive that you might not have either the resources, the skill set, nor confidence to manage the challenges you are facing• Experiences mild stress reactions: increased heart beat, shallow breathing, tense muscles	<ul style="list-style-type: none">• Stress response remains activated even when stressors are not present (ie becomes dysregulated)• Experiences moderate stress reactions that linger: feelings of excessive guilt, shame, and/or blame• May experience exhaustion and loss of joy at work	<ul style="list-style-type: none">• Stress response is chronically dysregulated• Experiences severe stress reactions that are persistent and worsen over time that interfere with your daily functioning




BIPOC Mental Health Resources



Click [here](#) to find resources specific to support BIPOC mental health



Hematology and Medical Oncology DEI Resources

To learn more about the Equity and Belonging Committee or to join please click [here](#).





BU Wellness Resources



Wellness RESOURCES

Seek Support

- [Wellness Resources for BU Faculty & Staff](#)
- [FitRec](#)
- [Sargent Choice Nutrition Center](#)
- [Meditation and Mindfulness](#)



Faculty Staff Assistance Office

Find more information [here](#).



Stay Informed

Find more information about employee wellness support [here](#).





Family Resources

[The Boston University Children's Center](#) provides an educational experience for the children of BU employees.



Human Resources

If needed, please reach out to the BU HR team [here](#).



Hematology and Medical Oncology DEI Resources

To learn more about the Equity and Belonging Committee or to join please click [here](#).



New Observership Submission Form

We would like to remind you all of the launch of our new online submission form for Observership applications that is now located on our website. This new system is designed to streamline the application process and make it smoother in the initial stages of onboarding.

Starting today, all observership applications must be submitted through the online form, which can be accessed at:

<https://www.bumc.bu.edu/hematology/observership-requests/>. The form also includes the rules and regulations, which were discussed at our last Section meeting, that were put in place by BMC.

If you have already submitted an application through email, there is no need to reapply using the new form. However, you are encouraged to use the online system for any future applications.

Faculty & Staff Recognition Award

Calling for Nominations!



Do you know someone who has gone above and beyond? Nominate them today and let their efforts be celebrated!

<https://www.bumc.bu.edu/hematology/faculty-staff-awards/>

The section of Hematology & Medical Oncology “Employee Recognition Award” is designed to recognize faculty and staff who work within administration, clinical care and research. This award serves as a means to celebrate excellence, foster a culture of appreciation, and inspire continuous improvement within the departmental community. It is designated for those who have demonstrated outstanding contributions, deliver exceptional service, and go above and beyond their expected duties in the section and the Cancer Center.

Follow Us on Instagram!

Hematology & Medical Oncology is LIVE on Instagram!
Follow us at [@BMCHemOnc](https://www.instagram.com/BMCHemOnc)



If you or one of your patients would like to be featured, please submit a request at <https://www.bumc.bu.edu/hematology/announcement-requests/>

Available Career Opportunities as of February 2025:

- [Clinical Investigator, Gastrointestinal Oncology](#)
- [Clinical Investigator, Genitourinary Oncology](#)
- [Advanced Practice Provider, Neuro-Oncology and CNS Malignancies](#)
- [Director, Ambulatory Medical Director](#)
- [Director, Neuro-Oncology Program](#)
- [Director, Sickle Cell Program](#)
- [Clinical Investigator Hematology/Hematologic Malignancies](#)
- [Senior Administrative Coordinator](#)
- [Advanced Practice Provider, Stem Cell Program](#)