

Section of Hematology and Medical Oncology Newsletter



In This Issue:

- Amyloid Program at ISA: 2
- New Hires: 3
- Awards: 4
- Publications: 5-6
- Hem Onc Sept Social: 7
- BU Profile Demographics: 8
- Coding Education Sessions: 9
- Billing for E-Consults: 10
- Upcoming Events: 11



Camille Edwards, MD, discussed the management of cardiac AL amyloidosis, highlighting the importance of the multidisciplinary team (MDT) in treating this disease at the 2022 International Symposium on Amyloidosis (ISA) held in Heidelberg, Germany. Watch the interview: <https://www.youtube.com/watch?v=Lr0THngsXkk>

Amyloid Program at ISA



Our amyloid program already has a longstanding history of outstanding research and clinical care, but the contributions of the BU/BMC group at International Symposium on Amyloidosis in Heidelberg in September took it to a whole new level!

- **Camille Edwards**, Joshua Gustine, **Andrew Staron**, Tracy Joshi, **Lisa Mendelson**, **Michelle Lee**, and Jorge Ruiz presented a combined total of seven abstracts.
- Members of our group chaired four sessions, including a state of the art opening lecture by **Gareth Morgan** and an interactive session and panel discussion on unmet needs chaired by **Vaishali Sanchorawala**.
- **Andrew Staron** received the presidential award for outstanding oral presentation as well as a poster prize.

New Hires



Galia Pollock, MD

Galia Pollock, MD, began her Advanced Fellowship in Sickle Cell Disease on October 1, 2022. Galia received her undergraduate degree in biochemistry from the University of Winnipeg in Manitoba, Canada, where she also completed her medical education, residency in internal medicine, and fellowship in hematology.



Emily Mann, MD

Emily Mann, MD has accepted a position as a heme/onc hospitalist, beginning in July of 2023. Emily received her undergraduate degree in cell biology from Boston University, where she also completed her medical education and a residency in internal medicine. She has experience in both basic and clinical research, is co-chair of the Women in Internal Medicine Committee for the Boston University residency program, works as a peer advisor for BUSM, and is a co-host of a podcast for and about women in medicine. Her numerous achievements and outstanding clinical skills led to her selection as one of the Chief Residents for the BUSM internal medicine program this year.



Nicole Faber, PA

Nicole Faber, PA has accepted a position as an APP, beginning in January of 2023. Nicole received an undergraduate degree in behavioral neuroscience from Northeastern University, where she won a Dean's Scholarship and was selected to the honor society. She has prior research experience in neurobiology, and has also participated in the St. Stephen's Youth Program as a Youth Learning Center Mentor. She completed the Physician Assistant program at Boston University School of Medicine, and received rave reviews from everyone who worked with her.



Olivia Stephenson, BSN, RN

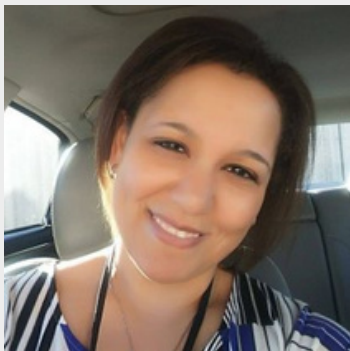
Olivia Stephenson, BSN, RN, joins the Cancer & Hematology Clinical Research Program as Clinical Research Nurse I. Olivia earned a Bachelor of Science Degree in Nursing at Southern New Hampshire University. Her previous experience includes work as a staff nurse in medical-surgical/telemetry units in Massachusetts and Rhode Island, and most recently as a Clinical Research Nurse Coordinator in care access research. She states that a goal since becoming a nurse was to obtain a position in clinical research and is excited to start. She enjoys being outdoors and spending as much time as possible with her family in New Hampshire.

Awards



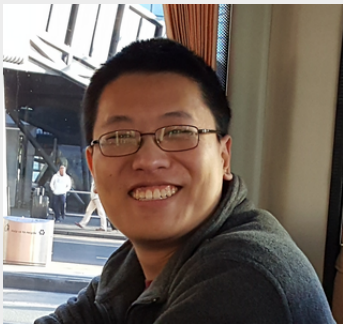
George Murphy, PhD

George Murphy, PhD, was elected as Co-Chair of the Boston University Council Committee on Research and Scholarly activities, together with Gloria Waters (Associate Provost for Research) This is the first time anyone from BUSM has led the committee!



Nellie Ferrara

Nellie Ferrara received the Marie Antoinette Evans Staff Diversity Award. This honor is awarded to a Department of Medicine non-faculty member who promotes the values of diversity, equity, inclusion, and accessibility and promotes a culture of diversity within the Department and the broader community.



George Chen

Graduate students **George Chen** and **Christina Ennis** (Dries Lab) were selected for poster awards at the annual meeting of junior investigators of the NCI Cancer Systems Biology Consortium, which was held virtually at the end of August. These graduate students participated with other same stage investigators drawn from NCI funded labs nationwide. Christina's abstract was entitled "Unraveling the gene regulatory networks linking EMT and immune exhaustion in triple negative breast cancer." George's abstract was entitled "3D Spatial Multi-Omic Profiling to Unravel Triple-Negative Breast Cancer."



Christina Ennis



Boston University
School of Medicine



Publications



Anthony Shelton, RN



Lisa Mendelson, NP

Anthony Shelton, RN, Lisa Mendelson, NP, and collaborators published "Understanding Amyloidosis: Unraveling the Complexities and Therapeutic Approaches for Oncology Nurses."

Fogaren T, Shelton AC, Faller DV, Stull DM, Thuenemann S, Mendelson L. Understanding Amyloidosis: Unraveling the Complexities and Therapeutic Approaches for Oncology Nurses. Clin J Oncol Nurs. 2022 Jul 25;26(4):421-432. doi: 10.1188/22.CJON.421-432. PMID: 35939729.



Gerald Denis, PhD



Gretchen Gignac, MD

Gerald Denis, PhD, Gretchen Gignac, MD, Meredith Halpin, MD, Chris Heaphy, PhD, and collaborators published "Novel plasma exosome biomarkers for prostate cancer progression in co-morbid metabolic disease."

Jafari N, Chen A, Kolla M, et al. Novel plasma exosome biomarkers for prostate cancer progression in co-morbid metabolic disease. bioRxiv; 2022. DOI: 10.1101/2022.02.01.478722.



Meredith Halpin, MD



Chris Heaphy, PhD



Publications



Vaishali
Sanchorawala, MD

Vaishali Sanchorawala, MD, and collaborators published "[Graded Cardiac Response Criteria for Patients With Systemic Light Chain Amyloidosis.](#)"

Muchtar E, Dispenzieri A, Wisniowski B, Palladini G, Milani P, Merlini G, Schönland S, Veelken K, Hegenbart U, Geyer SM, Kumar SK, Kastiris E, Dimopoulos MA, Liedtke M, Witteles R, Sanchorawala V, Szalat R, Landau H, Petrlik E, Lentzsch S, Coltoff A, Bladé J, Cibeira MT, Cohen O, Foard D, Wechalekar A, Gertz MA. Graded Cardiac Response Criteria for Patients With Systemic Light Chain Amyloidosis. J Clin Oncol. 2022 Oct 10;JCO2200643. doi: 10.1200/JCO.22.00643. Epub ahead of print. PMID: 36215675.

Vaishali Sanchorawala, MD, and collaborators published "[Exploiting endogenous and therapy-induced apoptotic vulnerabilities in immunoglobulin light chain amyloidosis with BH3 mimetics.](#)"

Fraser CS, Spetz JKE, Qin X, Presser A, Choiniere J, Li C, Yu S, Blevins F, Hata AN, Miller JW, Bradshaw GA, Kalocsay M, Sanchorawala V, Sarosiek S, Sarosiek KA. Exploiting endogenous and therapy-induced apoptotic vulnerabilities in immunoglobulin light chain amyloidosis with BH3 mimetics. Nature Communications. 2022 13(1):5789.

Vaishali Sanchorawala, MD, and collaborators published "[Light Chain Testing Abnormalities Among Patients With Transthyretin Amyloid Cardiomyopathy Referred for Technetium-99m Pyrophosphate Imaging.](#)"

Alreshq R, Cozzolino M, Lilleness B, Pipilas A, Mendelson L, Joshi T, Muralidhar V, Guardino E, Berk JL, Siddiqi OK, Gopal DM, Sanchorawala V, Ruberg FL. Light Chain Testing Abnormalities Among Patients With Transthyretin Amyloid Cardiomyopathy Referred for Technetium-99m Pyrophosphate Imaging. Am J Cardiol. 2022 Aug 23:S0002-9149(22)00755-X. doi: 10.1016/j.amjcard.2022.06.064. Epub ahead of print. PMID: 36028388.

Vaishali Sanchorawala, MD, and collaborators published "[Outcomes of renal transplantation in patients with AL amyloidosis: an international collaboration through The International Kidney and Monoclonal Gammopathy Research Group.](#)"

Havasi A, Heybeli C, Leung N, Angel-Korman A, Sanchorawala V, Cohen O, Wechalekar A, Bridoux F, Jaffer I, Gutgarts V, Hassoun H, Levinson M, Rosenbaum C, Milani P, Palladini G, Merlini G, Hegenbart U, Schönland S, Veelken K, Pogrebinsky A, Doros G, Landau H. Outcomes of renal transplantation in patients with AL amyloidosis: an international collaboration through The International Kidney and Monoclonal Gammopathy Research Group. Blood Cancer J. 2022 Aug 18;12(8):119. doi: 10.1038/s41408-022-00714-5. PMID: 35982035

Hem Onc September Social Event

Dona Habana



Update BU Profile Faculty Demographics



Verify your BU HR profile through MyBUworks (select “Self-Identification”) and make any necessary corrections to your race, ethnicity, veteran status, and disability status by November 15. This request applies to everyone - new faculty and faculty who have been here for some time, and will take less than one minute. Note: If you see your gender listed incorrectly, please contact hr@bu.edu. At this time, only binary legal genders are available in SAP, but if it is incorrect or if you have had a legal change of gender the HR Service Center can help update.

This data will inform a public BUMG dashboard to track representation, retention, advancement, and professional vitality across all demographics (an example can be found [here](#)). Collecting and reporting data by race, ethnicity, and gender are foundational elements to building a culture of equity and vitality. When we understand the data around our demographics, we ensure we have a better appreciation of who is being impacted and how, which leads to more effective solutions.

Federal guidelines instruct the BU Equal Opportunities Office to use ID photos to assign faculty race, ethnicity, and gender to those who have not self-identified upon hire. We understand the ways in which we collect race, ethnicity, and gender may not reflect exactly how one identifies. However, we are limited by the categories used by the various government entities to which we must report. Therefore, we ask you to choose the category that most closely matches your identity, per the above.

Please reach out to evi@bmc.org with any questions or concerns.

2023 Evaluation and Management Coding Education Sessions - Registration is OPEN!

It's time to sign up for the 2023 E/M Coding Changes Education sessions!

This training is intended for all providers who utilize the Inpatient, Observation, or Emergency Department Services codes for billing and also any coding/billing or administrative staff that is interested in learning more about the changes that go into effect on January 1, 2023. Mid-level providers and residents are also encouraged to attend, as they too utilize these code sets. Please access the registration for all 12 sessions by using the link below. This link will take you to Workday and directly to the sign up information. You will find 12 dates and times available. You **MUST** use your BMC email to sign into Workday for registration. If you have not used your BMC email or logged into Workday in the past 90 days, you will need to call IT to have your account reactivated.

<https://www.myworkday.com/bmc/learning/course/05fb02f17fc41001edb8d771bfaf0000?type=9882927d138b100019b6a2df1a46018b>

There is an option (recommended) to add the education session to your Outlook calendar within the Workday sign up. Please follow the directions on the tip sheet on how to add this to your Outlook calendar.

A download of the presentation will be available on the day before the course offering. There are directions for this step, as well, on the attached tip sheet. Please make sure to have this document available on the day of the education session. It is recommended to print this out and have with you while attending the LIVE webinar.

Once your registration is complete, you will receive an email from Workday Digest to confirm your registration. Also, you will receive a reminder from Workday Digest 72 hours before the selected time and date of course.

If you should encounter any problems with registering for the education sessions, please reach out to Lisa Strzepka, Manager Coding and Education, for assistance at lisa.strzepka@bmc.org.

Billing for E-Consults

What is an E-Consult?

An E consult is an interprofessional telephone/internet/electronic health record consultation service that is utilized when the attending qualified clinician requests the input of another provider with specific knowledge of the condition. This specialist may assist in diagnosis or treatment of the patient without seeing the patient and often occurs when the situation is urgent and/or complex in nature.

Guidelines

- The patient may be a new or established patient with a new problem or exacerbation of a current problem in the eyes of the consulting physician.
- For codes 99446–99449, and 99451 the CPT® definition specifically says consulting physician, not “or other qualified health care professional”.
- Do not bill codes 99446 – 994451 for services performed by a nurse practitioner or physician assistant.
- The consultant may not have seen the patient within the previous 14 days or within the next 14 days or next available appointment opening.
- This discussion includes appropriate review of medical records, laboratory and radiology results, medication review/tolerance, and pathology results.
- The consult should account for more than 50% of the time in discussion; if more than one discussion is necessary, the time is cumulative with the code reported one time. If greater than 50% of the time is in data review and/or analysis, do not bill 99446 -99449 (see 99451).
- The patient's medical record should contain a request for the consult with an explanation as to the medical necessity of the request.
- The consulting physician should provide a verbal and written report to the requesting/treating clinician.
- These codes are not reportable if the discussion requires less than five minutes of time.
- Do not report these codes more than once in a 7-day period.
- Do not use for a transfer of care.
- The patient's medical record should contain the patient/family's verbal consent. Deductibles and cost-sharing will apply.

CPT Codes for the Consulting Physician

Interprofessional telephone/Internet/electronic health assessment and management service including a verbal and written report to the patient's treating/requesting physician or other qualified healthcare professional.

99446: 5-10 minutes of medical consultative discussion and review

99447: 11-20 minutes of medical consultative discussion and review

99448: 21-30 minutes of medical consultative discussion and review

99449: greater than 30 minutes of medical consultative discussion and review

For written report only use 99451: 5 minutes or more of medical consultative time

Upcoming Section Events



11/3/22, 12:00pm: Monthly Section Meeting: Join Zoom Meeting

[https://bostonmedicalcenter.zoom.us/j/94214793455?](https://bostonmedicalcenter.zoom.us/j/94214793455?pwd=MEILRHoxdFJ2ZFNmLzVUQ1U5bWNLZz09)

pwd=MEILRHoxdFJ2ZFNmLzVUQ1U5bWNLZz09

Meeting ID: 942 1479 3455

Passcode: 602802

Follow Us on Instagram!



Hematology & Medical Oncology is officially LIVE on Instagram!

Follow us at [@BMCHemOnc](https://www.instagram.com/BMCHemOnc)

If you or one of your patients would like to be featured, please submit a request at

<https://www.bumc.bu.edu/hematology/announcement-requests/>

Available Career Opportunities as of September 2022:

- Advanced Practice Provider
- Inpatient Hospitalist
- Genetic Counselor
- Clinical Investigator, Hematology/Hematologic Malignancies
- Administrative Coordinator
- Post Doc Fellow