

Section of Hematology and Medical Oncology

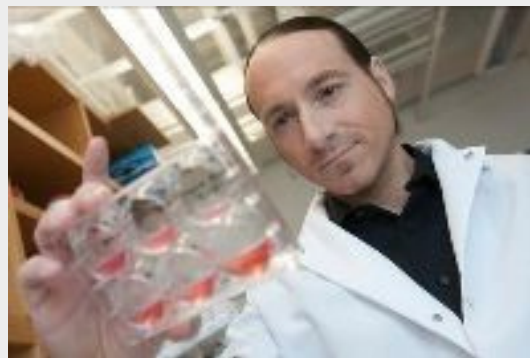
Newsletter



In This Issue:

- BU-BMC Cancer Center Retreat- 2
- Publications- 3
- Presentations- 4
- Promotions/Awards- 5
- Clinic Updates- 6-7
- DOM Evans Days- 8
- Announcements- 9
- Upcoming Section Events- 10

George Murphy, PhD, Receives 2021 Healthy Longevity Catalyst Award



Congratulations to Dr. George Murphy, who is a recipient of the 2021 Healthy Longevity Catalyst Award for his project “Deciphering Mechanisms of Disease Resistance and Longevity in Centenarians.”
[Read more](#)

BU-BMC Cancer Center Retreat



The BU-BMC Cancer Center Retreat was held on Saturday, September 18th, on the Charles River Campus. Combined groups of faculty from BU and BMC met to review the status of the Cancer Center and to discuss future directions. There were overviews of clinical and research programs at BU institutions followed by breakout sessions to discuss gaps and priorities. A summary of the retreat will be distributed with plans for a follow up larger retreat in the future.



Publications



Lynsie Adams, NP

Lynsie Adams, NP, and collaborators published An Integrative Review of the Role of Nurses in Fertility Preservation for Adolescents and Young Adults With Cancer.

Crespi, C., Adams, L., Gray, T., Azizoddin, D. An Integrative Review of the Role of Nurses in Fertility Preservation for Adolescents and Young Adults With Cancer. *Oncology Nursing Forum*. 2021 Sep; 48 (5): 491-506.



Isabel Dominguez, PhD

Strategies on medical education proposed by **Isabel Dominguez, PhD**, and Dr. Ann Zumwalt were featured in Letter to the Editor: "It Takes Two to Build a Relationship for Optimal Integration of Basic Sciences in Medical Curricula,"

Harris, D. Letter to the Editor: It Takes Two to Build a Relationship For Optimal Integration of Basic Sciences in Medical Curricula. *Advances in Physiology Education*. 2020 Sep 1; 44(3): 400-401.



Charlene Sylvestre, NP

Charlene Sylvestre, NP's, abstract submission "An Educational Program to Improve Nursing Care for Patients with Sickle Cell Disease" has been accepted for publication in the *Journal of Sickle Cell Disease and Hemoglobinopathies*.

Presentations



Vaishali Sanchorawala, MD

Dr. Vaishali Sanchorawala presented the following talks:

- Meet the Expert: Management of AL (Light Chain) Amyloidosis; 18th International Myeloma Workshop, Vienna, Austria, September 9, 2021.
- AL Amyloidosis: A Case Based Discussion at the Mumbai Hematology Group Live webinar on September 25, 2021.
- The Role of SCT in AL Amyloidosis in the Era of Novel Agents at Columbia University Medical Center on September 27, 2021.



Charlene Sylvestre, NP

Charlene Sylvestre, NP, presented her abstract "An Educational Program to Improve Nursing Care for Patients with Sickle Cell Disease" at the Foundation for Sickle Cell Disease Research's Inaugural Nursing Symposium on 10/1/21.

Promotions



Congratulations to Dr. Jean-Antoine Ribeil, Clinical Director of the Sickle Cell Center of Excellence, for his promotion to Associate Professor of Medicine.

Jean-Antoine Ribeil, MD, PhD

Awards



Raymon Chen

Raymon Chen in Dr. Shuaiying Cui's lab received the fall 2021 UROP Student Research Awards. He will be leading a project focus on a novel human lncRNA with an important role in the regulation of fetal hemoglobin (HbF) with the goal of acquiring a new therapeutic target for HbF induction in patients with SCD and β -thalassemia. Targeting lncRNAs therapeutically has the advantages of increased specificity, different RNA-directed therapeutic approaches, and the possibility of small molecule inhibitors. The proposed studies would allow him to gain skills and knowledge of various cutting-edge techniques, such as lentivirus-mediated RNA interference and gene delivery to human hematopoietic stem or progenitor cells.

Clinic Updates



Clinic renovations began on Wednesday, September 22nd. An outline of the work that will be completed in the next 16-20 weeks is included below.

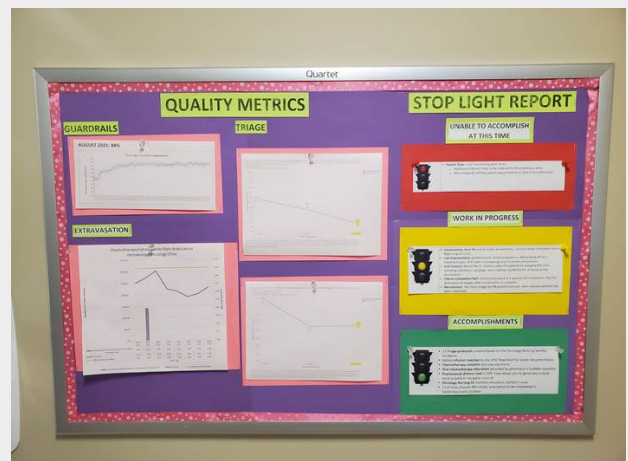
- Exam/consult space - Starting 9/22
 - + 3 exam rooms through converting 2 consult rooms in 3400 and 1 office in 3200
 - Transition 2 offices in 3400 to consult space, resulting in no loss of consult rooms
 - Vipasha will be moved and will share an office with Briana in suite 3400 starting 9/22
- Provider workstations - Starting 9/22
 - +15 total workstations
 - +1 workstations in 3400
 - +14 workstations in 3200 in the old pharmacy space (7 provider, 7 RN)
- Other - Start TBD
 - + Lockers for clinic staff in break room
 - Waiting rooms
 - replace carpeting
 - patient walls (including patching)

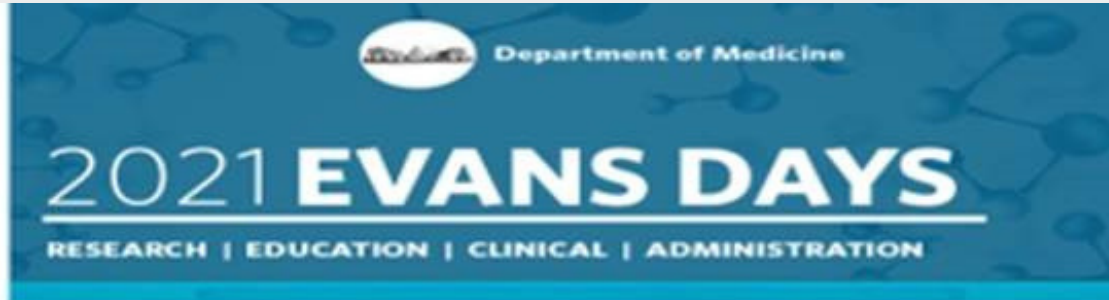
All work will be completed after hours and weekends. The planned renovations should not effect egress or cause major disruptions to clinic flow. Updates will be provided as needed. Please reach out to Radhika Patel with any questions or concerns.

Clinic Updates

Thank you to Jane and Ryann who did an amazing job with our Magnet tour yesterday. Below are pictures of our boards in the clinic. When the tour was complete, the Magnet escorts (two internal float pool nurses) stated that our tour was one of the best they had seen and that they had learned so much about our department. Such a proud moment for our team!

Magnet is one of the most prestigious nursing designations in the country. It shows that we are an organization that recognizes potential for our nurses to lead healthcare change. It recognizes healthcare organizations that provide the best nursing care. and only ~9% of hospitals in the US have the designation.





2021 Schedule

**Thursday,
October 7, 2021**

Oral Presentations

8:30am – 9:30am

Poster Sessions

9:30am – 12:30pm

Dr. Coleman interviews Ingelfinger Professor Dale Abel, MD, PhD

12:30pm – 1:00pm

ARC Presentations

1:15pm – 2:15pm

Wilkins Visiting Professor Lecture

3:00pm – 4:00pm

Drew Weissman, MD, PhD

Professor of Medicine
Perelman School of Medicine
University of Pennsylvania



All events on October 7th will be virtual and take place on the EposterBoards Platform.

**Friday,
October 8, 2021**

Ingelfinger Visiting

Professor Lecture

12:00pm – 1:00pm

Dale Abel, MD, PhD

Professor of Internal Medicine –
Endocrinology and Metabolism
University of Iowa
Roy J. & Lucille A. Carver College of Medicine
Department of Internal Medicine



Please use the DOM Grand Rounds Zoom link:

<https://bostonu.zoom.us/j/94558249649?pwd=MFhvenlZOWVvWkZPeXF4QkphRnJQdz09>

Meeting ID: 945 5824 9649. Passcode: 447072

Announcements

BMC COVID-19 Vaccine Requirement

The deadline for the COVID-19 vaccine requirement is Friday, October 15th at 5 p.m. Almost 90% of BMC employees and LIPs are compliant. As a reminder, to meet this requirement, which is a condition of employment, all BMC employees and LIPs must get at least one dose of the COVID-19 vaccine and enter their compliance in the Employee Health Portal by Friday, October 15th.



Follow Us on Instagram!

Hematology & Medical Oncology is officially LIVE on Instagram!
Follow us at [@BMCHemOnc](https://www.instagram.com/BMCHemOnc)

If you or one of your patients would like to be featured, please submit a request at <https://www.bumc.bu.edu/hematology/announcement-requests/>

BMC Provider Profile Update Form

If you would like to add updates to your BMC Provider Profile Page, please fill out the form [linked here](#).

Available Career Opportunities as of September 2021:

- Clinical Investigator, Hematology/Hematologic Malignancies
- Advanced Nurse Practitioner (GU)
- Director of Operations - Cancer Care
- Clinical Research Coordinator
- Sickle Cell Clinical Research Assistant
- Clinical Research Coordinator – Hematology and Medical Oncology
- Research Assistant - Hematology and Medical Oncology
- Advanced Fellowship, Sickle Cell Disease

Upcoming Section Events



10/7/21: DOM Evans Days

1:40pm-2:00p.m. A Multi-Disciplinary Program to Identify Predictors of Efficacy and Resistance to Cancer Checkpoint Inhibition (PIPER-C) ARC

- [Dr. Matthew Kulke](#), Professor, Hematology & Medical Oncology
- Dr. Evan Johnson, Associate Professor, Computational Biomedicine

10/14/21, 12:00pm: Special Lecture, Emily Hsu, MD, University of Connecticut

10/15/21, 11:45am, Moakley Green: [Hem/Onc Section Photo](#)

10/15/21, 3:00pm: [Anti-Racism Event For Entire Section](#)

10/21/21, 12:00pm: Special Lecture, Evan Chris Chen, MD, Dana-Farber Cancer Institute