

Section of Hematology and Medical Oncology

Newsletter



In This Issue:

- Welcome New Fellows- 2
- Staff Updates- 3-5
- Clinic Updates- 6
- New Additions- 7
- Publications- 8
- Awards- 9
- Lab Animal Per Diem Rates- 10
- DOM Evans Days- 11
- Announcements- 12
- Upcoming Events- 13

Congratulations to Dr. Vaishali Sanchorawala for her recent authorship in the New England Journal of Medicine. [Read more](#)



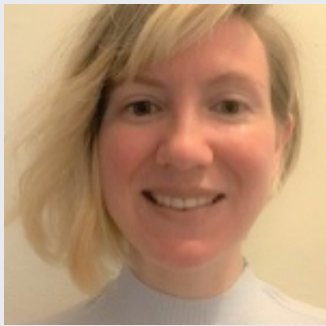
Welcome Our New Fellows



Britney Bell, MD

Residency: Creighton Health Care Alliance

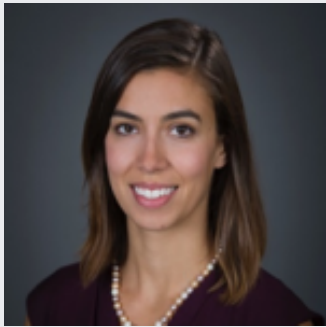
Medical School: Creighton University School of Medicine



Evgenia "Jen" Granina, MD (Geri/Onc Fellow)

Residency: Virginia Commonwealth University

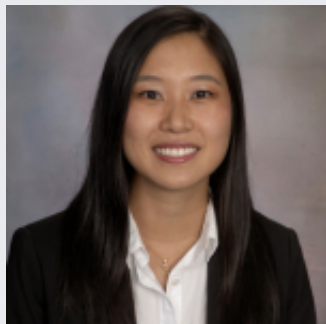
Medical School: Albany Medical School



Claire Smith, MD

Residency: Duke University Hospital

Medical School: Duke University School of Medicine



Lesley Wu, MD

Residency: Mount Sinai Beth Israel

Medical School: Rutgers New Jersey Medical School

Staff Updates



Adrian Ilinski

Adrian Ilinski has joined the Translational Research Core in the role as Research Assistant. Adrian joins us from Boston University, where he earned his MS in Medical Sciences in 2021 and completed his master's thesis in the Orthopaedic Research Laboratory at Boston University. Before completing his MS, he studied Molecular and Cell Biology at the University of Connecticut, graduating in 2015. He is interested in pursuing a career in medicine and is currently applying to medical school. After college, he worked as a medical scribe in the Orthopaedic Department at UCONN Health, where he worked on clinical outcomes studies with one of the providers. Outside of research/academia, Adrian has volunteered with Special Olympics, where he assisted members of the physical and intellectually disabled of his community through sports participation and occasionally completed alongside them in the unified relay events. He also enjoys participating in sports, especially volleyball, and exploring the city. Adrian is originally from Burlington, Connecticut. Adrian will be located in EBRC 4 and can be reached at adrian.ilinski@bmc.org or 8-7597.



Sarah Ebhodaghe, MS

Sarah Ebhodaghe, MS, has joined the Cancer & Hematology Clinical Research Program in the role of Clinical Research Coordinator II. Sarah holds a Bachelor of Science from Madonna University in Nigeria and received her Master of Science in Global Health Policy from Brandeis University. She previously worked at WorldCare Clinical, leading clinical operations. She will be coordinating Head & Neck, Gastrointestinal, and Thoracic clinical research protocols. Sarah will be located in EBRC 405E, and can be reached at sarah.ebhodaghe@bmc.org or x8-7559.

Staff Updates



Faniela Louis, RN

Faniela Louis, RN, has joined the Cancer & Hematology Clinical Research Program in the role of Clinical Research Nurse I. Faniela earned an Associate of Science in Nursing from Laboure College and is working toward her Bachelor of Science in Nursing. Her previous experience includes hospital unit coordination, attending to personal care needs and as a residential counselor. Faniela speaks fluent Haitian Creole and French, and is excited to provide access to clinical trials and excellent care for our patients! She will administer studies for Thoracic and Genitourinary Oncology. Faniela will be located on EBRC 405C and can be reached at faniela.louis@bmc.org or x8-8274.



Sarah Doktor, RN

Sarah Doktor, RN, has accepted the full time infusion RN position in the Cancer Care Center. She has worked with us since the end of May in a per diem capacity and starts full time on August 9th. Sarah recently moved back to the area and comes to us from Memorial Sloan Kettering Cancer Center in New York where she worked in their urgent care/clinical decision unit. She cared for patients with a wide range of diagnoses as well as worked on the COVID unit. She is newly married and will be going on her dream honeymoon next month.



Da'Nesha Berment, RN

Da'Nesha Berment, RN, recently joined the Cancer Care Center and will be working full time in infusion. She joins us from the BMC medical/surgical float pool and has also worked in home infusion as well as at a correctional facility. Da'Nesha graduated from nursing school in 2017 and while in nursing school, her grandmother (pictured) was a patient in our department. Da'Nesha was mentored by a few of our nurses as she studied for her boards while sitting with her grandmother as she had her treatments. She feels a personal connection to our department and is very excited to be part of the team that took amazing care of her grandmother. Da'Nesha is currently orienting with Jane Makson.

Staff Updates



Lynnette Henshaw Pharm.D. joined the Pharmacy team on July 19th as an oncology clinical specialist and will work in both the inpatient and ambulatory setting. Lynnette recently graduated from our Oncology Pharmacy Residency program.

Lynnette Henshaw Pharm.D.



Ashka Patel Pharm.D. will be joining the Pharmacy team on August 2nd as the inpatient oncology clinical specialist. Ashka is a graduate of Mass. College of Pharmacy, Boston and most recently completed her Oncology Pharmacy Residency at Houston Methodist Hospital.

Ashka Patel Pharm.D.



David Hughes PharmD will be stepping into a manager position overseeing the specialty pharmacy team.

David Hughes PharmD



Jasmine Patel Pharm D will take over David Hughes direct patient care responsibilities and will be working in the specialty pharmacy full time.

Jasmine Patel PharmD



Clinic Updates



The clinic is happy to welcome two new PNs, Nancy Ukhuegbe (sickle cell) and Shema Hussain (thoracic and head and neck cancers). Nancy and Shema will be training alongside Jake Donehey and Katherine Sypek who will be leaving BMC on 8/13. Jake and Katherine started together 3+ years ago and are both pursuing their master's degrees in Social Work this fall.

Thank you to Jake and Katherine for their hard work and dedication to our patients and welcome to the team Nancy and Shema!

Friendly reminder that our navigation program focuses on patients with a cancer or sickle cell diagnosis. We have received an increasing number of referrals for non-oncology/non-sickle cell patients. If necessary, PNs can provide one-time education or resource referrals, however, we do not have the bandwidth to provide ongoing navigation support for non-oncology and non-sickle cell patients.

Over the next few months, the PN team will be managing a number of transitions. When Jake and Katherine leave, they will be transferring > 120 established patients to Silvia, Madeline, Caitlin, Jackeline and Talissa. Mid -September, Silvia will go on maternity leave and the team will also take on Silvia's caseload of ~ 70 patients in addition to covering all new referrals for patients with blood and GYN cancers. I will be going on maternity leave at the end of July and it will be a few months before Nancy and Shema are fully up to speed. Please be patient with the timeliness of referrals and thank you in advance for your understanding as the team does their very best to continue providing excellent navigation services during this time.

All PNs can easily be reached over email or in Epic by using the below group lists:

- EMAIL: DG-CancerCarePatientNavigators
- EPIC: BMC AMB HEM ONC PATIENT NAVIGATORS

New Additions



Ada Mei Hagedorn

Congratulations to Elliott Hagedorn and family on the arrival of Ada Mei Hagedorn!



Jacob Anthony McDonough

Congratulations to Katie Finn and family on the arrival of Jacob Anthony McDonough!



Publications



Chris Heaphy, PhD

Dr. Chris Heaphy and collaborators published Prognostic biomarkers in pancreatic neuroendocrine tumors.



Laura Lowery, PhD

Dr. Laura Lowery and colleagues published Tau, XMAP215/Msps and Eb1 co-operate interdependently to regulate microtubule polymerisation and bundle formation in axons.



Hossein Sadrzadeh, MD

Dr. Hossein Sadrzadeh and colleagues published “Challenges of Treating Patients with Relapsed or Refractory Acute Myeloid Leukemia in the Era of Novel Therapies”

Awards

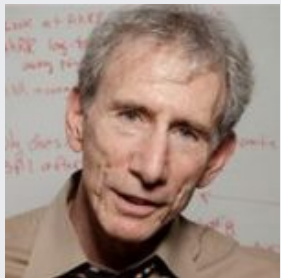


Heme/Onc



Computational Biomedicine

A New ARC Project "A Multi-Disciplinary Program to Identify Predictors of Efficacy and Resistance to Cancer Checkpoint Inhibition (PIPER-C)" has just been awarded.



Environmental Health



Heme/Onc and Pharmacology

Boston Medical Center Receives American Cancer Society Grant to Help Patients Overcome Transportation Barriers in Boston and surrounding communities

The American Cancer Society has awarded a grant to the Cancer Care Center at Boston Medical Center (BMC) to address the transportation needs of cancer patients in Boston and the surrounding communities served by BMC. These grants are made available to health systems, treatment centers and community organizations in select communities through an application process. These grants focus on addressing unmet transportation needs of cancer patients, particularly vulnerable populations experiencing an unequal burden of cancer.

"Disparities predominantly arise from inequities in work, wealth, income, education, housing and overall standard of living, as well as social barriers to high-quality cancer prevention, early detection and treatment services," said Korey Hofmann, Cancer Control Strategic Partnerships Manager at the American Cancer Society. "Transportation options, such as Lyft are vital to help BMC patients get the treatments they need and deserve. We're thrilled to partner with BMC and Boston Cancer Support to support this important resource for patients."

Boston Cancer Support is an organization that oversees the Lyft program and has provided BMC with an annual grant for Lyft transportation since 2017. Boston Cancer Support aims to equip patients, families, caregivers, and healthcare professionals throughout Massachusetts with local resources and collaborative communities that afford them the very best chance at optimal health outcomes. "This service has been extremely helpful and feedback from our patients is that it is the most preferred method of transportation," shared Katie Finn, Program Manager for the Cancer Center Patient Navigator Program. "We are very grateful to Boston Cancer Support for helping BMC implement this program and to the American Cancer Society for this additional funding of \$5,000 to bolster the transportation support we can offer our patients." For additional information about the American Cancer Society, [visit cancer.org](https://www.cancer.org). For additional information about Boston Cancer Support, visit bostoncancersupport.org.

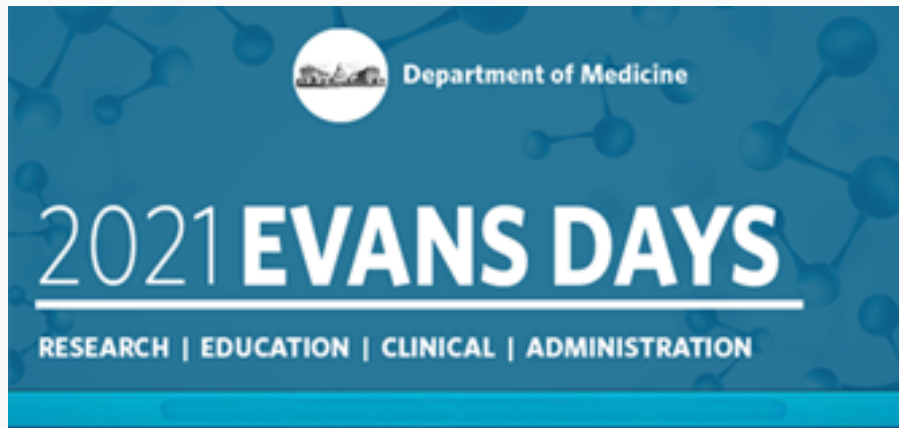


Lab Animal Per Diem Rate Charges

Boston University is committed to managing its animal care facilities as efficiently as possible and to reviewing costs annually to ensure that the re-charge rates for PIs are competitive. The University subsidizes the costs of animal housing as part of its investment in the research enterprise. However, as noted in the below table, subsidized rates are only applicable to research that is federally funded or for foundation or other nonprofit grants that carry the full overhead rate, also known as the facilities and administrative (F&A) rate, currently set at 65 percent. Please note that BU's F&A rate does not include the subsidized portion of the animal rate. This is a true cost to the University and is not reimbursed by any sponsor.

		Subsidized	Unsubsidized
Federal		X	
Industry			X
Foundation, Private with Full Overhead		X	
Foundation, Private without Full Overhead			X

Lab animal per diem rates can be found on the [Research Support](#) site.



Evans Department of Medicine Abstract Submission NOW OPEN!!!

2021 Evans Day

October 7-8, 2021

Boston University School of Medicine

Posters and their accompanying abstracts will be available to view on the ePosterBoards platform prior to Evans Day.

The 12 abstracts with the highest grade will be presented on Evans Day.

Oral Presentations: Thursday, October 7, 2021

8:30 AM - 9:30 AM

Poster Session: Thursday, October 7, 2021

9:30 AM – 12:30PM

Please contact Jennifer Visconti (Jennifer.visconti@bmc.org) with any questions.

Announcements

Follow Us on Instagram!



Hematology & Medical Oncology is officially LIVE on Instagram!
Follow us at [@BMCHemOnc](https://www.instagram.com/BMCHemOnc)

If you or one of your patients would like to be featured, please submit a request at <https://www.bumc.bu.edu/hematology/announcement-requests/>

BMC Provider Profile Update Form

If you would like to add updates to your BMC Provider Profile Page, please fill out the form [linked here](#).

Available Career Opportunities as of July 2021:

- Clinical Investigator, Hematology/Hematologic Malignancies
- Advanced Nurse Practitioner (Stem Cell Transplant)
- Advanced Nurse Practitioner (GU)
- Director of Operations - Cancer Care
- Clinical Research Coordinator
- Sickle Cell Clinical Research Assistant
- Clinical Research Coordinator – Hematology and Medical Oncology
- Research Assistant - Hematology and Medical Oncology

Upcoming Events



Thank you to our outstanding lab techs, students and researchers who helped clean out lab space in July in EBRC 4!

8/19/21, 12pm: **Hem/Onc Clinical Faculty Monthly Meeting**,
<https://bostonmedicalcenter.zoom.us/j/99763181712>

10/7/21-10/8/21: **DOM Evans Days**

10/15/21, 11:45am: **Hem/Onc Section Photo** on Moakley Green