

Section of Hematology and Medical Oncology

Newsletter



In This Issue:

- New Faculty Hires - 2, 3
- Publications - 3, 4, 5
- New Hires - 6, 7, 8
- Clinical Trials Update - 9
- Announcements - 10, 11, 12

From HEALTHCITY: Why Are Therapeutics Still Lagging for Sickle Cell Disease? In Short, Systemic Racism

This article discusses the reasons why treatments and advances for sickle cell disease have historically been neglected. Also highlighted in the article is how The Center of Excellence in Sickle Cell Disease at Boston Medical Center has partnered with the Center for Regenerative Medicine (CReM) to build the most extensive stem cell library for sickle cell disease in the world. [Read more here](#)

New Faculty Hires



We are excited to announce that **Raphael Szalat MD, PhD** has accepted an offer to join the section of Hematology/Oncology in a new position as Director of the Multiple Myeloma Program. In this capacity, Dr. Szalat will help lead our clinical efforts in multiple myeloma and will also initiate a laboratory-based research program focused on identifying the molecular and genetic basis of this disease.

Dr. Szalat is an accomplished physician/scientist who received his MD and early medical training in Paris, and then served as Chef de Clinique for three years in Immunology and Hematology at Saint-Louis Hospital. He subsequently received a Ph.D from the University of Paris, Sorbonne while also working as a research fellow investigating the genomics of multiple myeloma with Dr. Nikhil Munshi at Dana-Farber Cancer Institute and Harvard Medical School. In this early stage of his career he has already published widely, and is currently completing his hematology/oncology fellowship here at Boston University where he has impressed us all with his clinical skills as one of our chief fellows.



We are delighted to announce that **Lindsey Hildebrand, MD** has accepted an offer to join the section of Hematology/Oncology as a hospitalist, beginning in July 2021. Dr. Hildebrand is currently a senior resident in internal medicine here at Boston Medical Center and Boston University School of Medicine. During her rotations on the hematology/oncology inpatient service, she has impressed many of us with her outstanding patient care as well as her teaching and leadership abilities. Dr. Hildebrand is a graduate of Wellesley College and received her MD from the University of Massachusetts School of Medicine; she has been active in numerous teaching initiatives as a peer educator at the University of Massachusetts and as a resident educator here at Boston University. We are thrilled to have her join us in the spring!

New Faculty Hire



We are delighted to announce that **Geoffrey R. Oxnard, MD**, has accepted an offer to join the Section of Hematology/Oncology beginning in April 2021. Dr. Oxnard will be joining our thoracic oncology program, where he will see patients one day a week and assist in the development of research projects while continuing in his current role as vice president and global medical lead for liquid biopsies at Foundation Medicine in Cambridge.

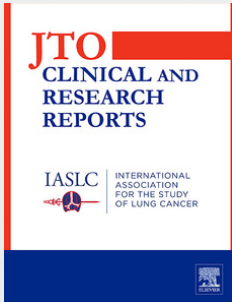
Dr. Oxnard is a graduate of Harvard College, received his medical degree from the University of Chicago, completed a residency in internal medicine at Massachusetts General Hospital, and a fellowship in medical oncology at Memorial Sloan Kettering Cancer Center and Weill Cornell Medical College. He subsequently joined the thoracic oncology program at Dana-Farber Cancer Institute where he rose to the position of Associate Professor in Medicine at Harvard Medical School. He is internationally recognized for both his clinical expertise in lung cancer and for his pioneering work on the use of liquid biopsies to guide the selection of targeted therapies. We are thrilled to have him join us in the spring!

Publications



Raphael Szalat, MD, PhD and collaborators published a national Veterans Affairs study on the Prevalence and outcome of COVID-19 infection in cancer patients. This is a comprehensive analysis from the VA hospitals of 22,694 cancer patients tested for Covid-19, with 1,794 (7.8%) reporting positive. The authors observed that the demographic and other clinical characteristics dominated both prevalence and outcome with limited impact from specific cancer type. [Read more here](#)

Publications



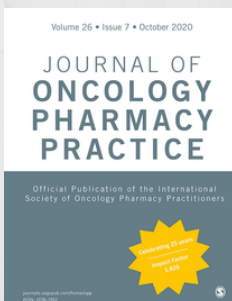
Umit Tapan, MD, Vanessa Furtado, MD, Muhammad Qureshi, MBBS, Peter Everett, MD, Kei Suzuki, MD and Kimberley Mak, MD published a manuscript in JTO Clinical and Research Reports titled "Racial and Other Healthcare Disparities in Patients with Extensive-Stage Small Cell Lung Cancer." [Press release](#) and [manuscript](#) linked here.



Umit Tapan, MD and collaborators had an abstract presented at a meeting of the European Society for Medical Oncology. The presentation was titled "Defining COVID-19 outcomes in thoracic cancer patients: TERA VOLT (Thoracic cancerERs international coVID 19 cOLLaboraTion)." [Read more here](#)



Vaishali Sanchorawala, MD and collaborators published a manuscript in the Orphanet Journal of Rare Diseases titled "The Amyloidosis Forum: a public private partnership to advance drug development in AL amyloidosis." [Read more here](#)



David Hughes, PharmD, Andrew Staron, MD and Vaishali Sanchorawala, MD published a manuscript in the Journal of Oncology Pharmacy Practice titled "A pharmacist's review of the treatment of systemic light chain amyloidosis" [Read more here](#)

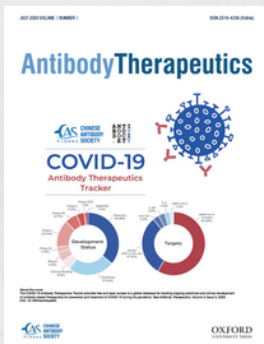
Publications



Lisa Mendelson, APRN-BC and **Vaishali Sanchorawala, MD** were featured in the Hematology Expert Review by the ASCO Post. This installment was focused on "Red Flag Presentations of Immunoglobulin Light Chain Amyloidosis in Patients With Multiple Myeloma." [Read more here](#)



Angel Rubio, Xuemei Zhong, PhD and **Tyrone Porter, PhD** published a paper in the journal Cogent Biology titled "In vitro characterization of chemokine-loaded liposomes." [Read more here](#)



Changchun Mao, Richard Near, PhD, Varuna Shibad, Xuemei Zhong, PhD and **Wenda Gao** published a paper in the journal Antibody Therapeutics titled "An IgA mimicry of IgG that binds polymeric immunoglobulin receptor for mucosa transcytosis." [Read more here](#)



Angel J Rubio, Tyrone Porter, PhD and **Xuemei Zhong, PhD** had a manuscript accepted to the journal Frontiers of Immunology, section of Cancer Immunity and Immunotherapy. The publication is titled "Duality of B cell-CXCL13 axis in tumor immunology." [Read more here](#)

New Hires



It is a great pleasure to introduce **Lisa Kim, NP** to our section! Lisa started with us on 10/1, and will be working as a dedicated stem cell transplant program nurse practitioner, reporting directly to Dr. Vaishali Sanchorawala as the Program Director. Lisa received her Masters of Science in Nursing – Family Nurse Practitioner from Boston College and completed a Bachelor of Science in Nursing at Massachusetts College of Pharmacy and Health Sciences. Prior to starting at BMC, Lisa gained experience as a NP at Massachusetts General Hospital, at Newton Wellesley Internists, and as a nurse at Beth Israel Deaconess Medical Center and the Spaulding Rehabilitation Hospital. Please join us in welcoming her to our team!

Please join us in welcoming the following new members to Cui Lab!



Yanan Sun, Ph.D., is a Postdoctoral fellow and joined the lab in 2020. She obtained her Ph.D. degree in biochemistry and molecular biology in June 2020 from the National Institute of Biological Sciences, Beijing, and Beijing Normal University. Her research interest focuses on the molecular mechanism of clearance of protein aggregates or damaged organelles in fundamental cellular processes. Outside of research, she enjoys watching movies and different TV series and eating good food.



Anita Dong is currently an undergraduate student at Boston University studying Biochemistry and Molecular Biology, with a minor in Public Health. She is from Queens, NY, and decided to study in Boston as she has a dedicated passion for healthcare and research. A cool experience she has had is working as an allergy and gynecology scribe at Massachusetts General Hospital. In her free time, she enjoys walking around the city, trying new foods, and taking photos

New Hires

Please join us in welcoming the following new members to Cui Lab!



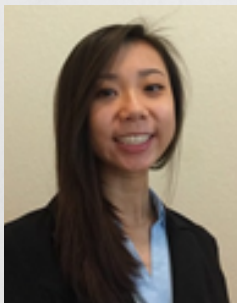
Kate Gaynor is currently an undergraduate junior majoring in Neuroscience and minoring in Public Health. She is from Howell, New Jersey and has a passion for healthcare and the brain sciences. In her free time, she enjoys reading, exploring Boston, and spending time with friends!



Nika Kozlov is currently a Human Physiology undergraduate studying at Boston Universities Sargent College of Health and Rehabilitation Sciences. She is from Cupertino, California. When Nika is not studying, she enjoys practicing yoga, visiting museums, and exploring Boston!

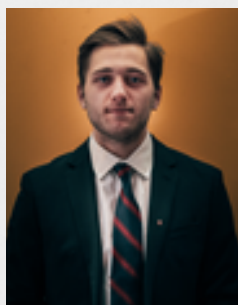


Jhevanae Langley is currently a senior at Boston University majoring in health science. She was born in Jamaica but grew up in Brooklyn for most of her life. Jhevanae's interest in research began her freshman year of college where she worked to characterize the functions of macrophages. In Dr. Cui's labs she hopes to make a contribution to the study of blood disorders and cancer as it affects many Americans and has affected both of her maternal grandparents. Outside of research, she enjoys traveling and trying all the new restaurants that Boston has to offer.



Nicole Nguyen is currently an undergraduate junior majoring in Human Physiology and minoring in Medical Anthropology. She is from Garland, TX, which is right outside of Dallas. Outside of her academics and passion in medicine, she has many hobbies, such as painting, hiking, and music.

New Hires

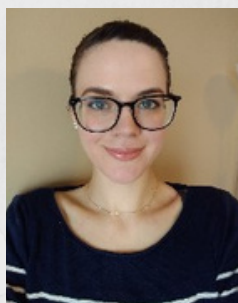


Please join us in welcoming Griffin Salus to the Heaphy Lab! Griffin Salus is currently a Biochemistry and Molecular Biology undergraduate studying at Boston University's College of Arts and Sciences. He is from Delaware County, Pennsylvania. Outside of academics, Griffin enjoys training for triathlons, hiking, and spending time with friends! We are thrilled to have Griffin join the Section!

Please join us in welcoming the following new members to the Dominguez Lab!



Jack Friend is currently a Boston University undergraduate from New York studying Biology. Jack is excited to work with animal models and comparative physiology in Dr. Dominguez's Lab, and he hopes to eventually study veterinary medicine. Outside of school and research, Jack likes to drink tea with Jessica, a pet snake.



Mary-Louise Hathorn is a second-year Masters student in the Medical Sciences program at Boston University. She is from Seattle, WA and hopes to enter medical school in the next few years. In her time off she enjoys reading, the outdoors, and spending time with her family.



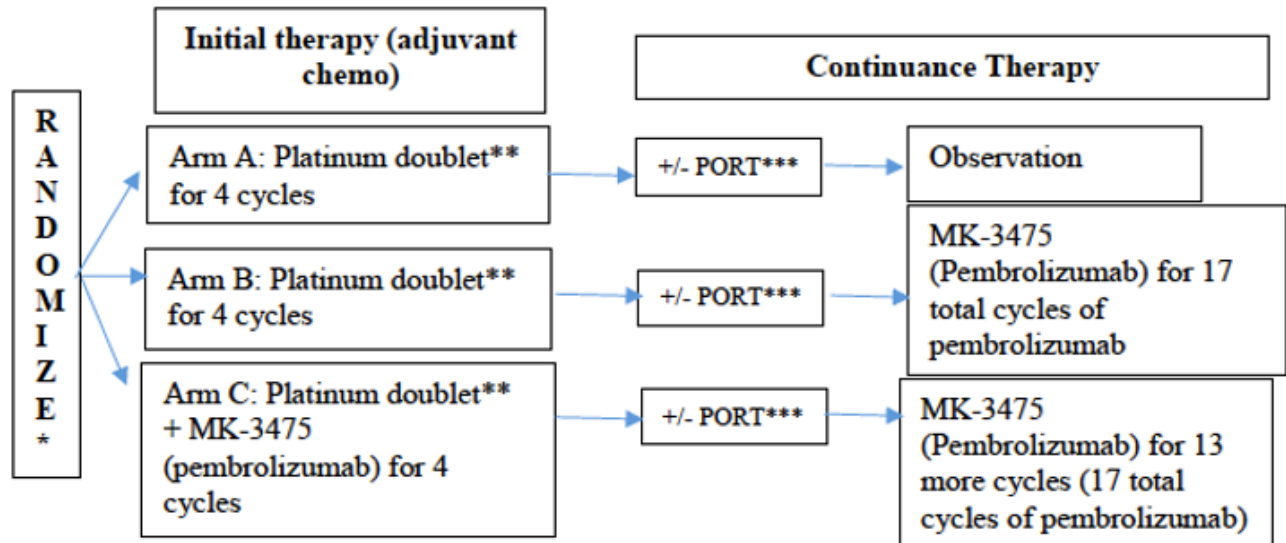
Prasida Unni is currently an undergraduate student majoring in Medical Sciences and minoring in Psychology. She is from White Plains, New York. In her free time, Prasida enjoys dancing and spending time with family and friends.

Clinical Trials Update

Newly Opened Cancer Clinical Trials

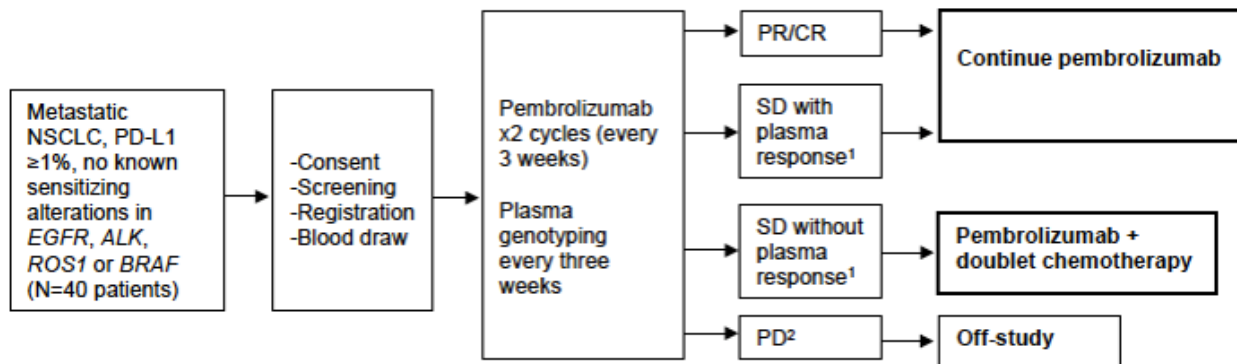
NSCLC – 1st Line Adjuvant

A081801 (ALCHEMIST chemo-IO): *Integration of Immunotherapy Into Adjuvant Therapy for Resected NSCLC: ALCHEMIST chemo-I*



NSCLC – 1st Line Metastatic

DFCI 19-532: *Pilot study of serial plasma genotyping to guide the adaptive treatment of advanced NSCLC receiving first-line pembrolizumab*



1. ≥50% reduction in plasma ctDNA max allele fraction (AF) between C1D1 and C2D1 for patients with high shed (≥0.5% max AF) at C1D1, or continued low shed (<0.5% max AF) for patients with low shed at C1D1
2. Asymptomatic radiographic PD will be managed as SD

Announcements

Rate adjustments for DOM Cores

Adjustments to the DOM Core rates for FY21 will be implemented on November 1st, 2020. These rates apply to The IVIS imaging Core, Cellular Imaging Core, Single Cell Sequencing Core, and the Analytical Instrumentation Core.

Two important points. First, rate adjustments will begin on November 1st, 2020. Second, although rates will increase for many of the services and instruments, the Department of Medicine (DOM) will subsidize 40% of the billable rate for faculty with a primary academic appointment in the DOM and 10% for non-DOM BU faculty. These rates and discounts apply through June 30, 2020, and are subject to change in subsequent fiscal years.

Rates will change as of November 1st, details of the new rates can be found at the respective Core's websites:

[Cellular Imaging Core](#)

[Single Cell Sequencing Core](#)

[Analytical Instrumentation Core](#)

[Metabolic Phenotyping Core](#)

[IVIS Imaging Core](#)

Sign up for Discussion Session on Race

We are organizing discussion groups, including Section and Moakley 3 staff, to focus on systemic racism and how it impacts us as a section. Please sign up for one of our upcoming sessions using the [Doodle poll](#) linked here.

From the DOM: LIFT and LIFT Train the Implementer Program - All Faculty and Staff

As part of the DOM's commitment to Diversity, Equity, Inclusion, and Belonging (DEIB), we are conducting:

- LIFT Microaggression Bystander Intervention trainings for faculty and staff in DoM, which will occur at Section Chief Meetings. We are also seeking faculty and staff who will serve as LIFT implementors and co-facilitate LIFT trainings in a LIFT Train the Implementer Program (L-TIP). The training program will take ~5 hours, including implementing and will result in receiving a LIFT Implementor Certificate. Please see the registration link for the LIFT implementor trainings: [Register Here](#) If you have questions please email BUMC, FDD bumcfdd@bu.edu or Angelique C. Harris PhD acharris@bu.edu



Announcements

DoM Reads:

DoM Reads:
So You Want to Talk About Race
by Ijeoma Oluo

Program Description:

- Discuss book in 4 parts
- Share thoughts on issues of race and racism
- Learn ways to initiate conversations on individual and institutional racism

Virtual Meeting Dates:

Fall 2020:	Spring 2021:
• Thurs, Nov 19 th	Wed, Feb 10 th
• Wed, Jan 20 th	Thurs, April 1 st


Times: 7:00-8:00pm

Open to all DoM staff and faculty

All sessions take place via Zoom


[Click Here](#) to Register

Questions? Contact:
Faculty Development and Diversity: bumcfd@bu.edu



- The book will be discussed in 4 sections:
 - o [Thursday, November 19th](#) (chapters 1-4, including the introduction)
 - o [Wednesday, January 20th](#) (chapters 5-9)
 - o [Wednesday, February 10th](#) (chapters 10-13)
 - o [Thursday, April 1st](#) (chapters 14-17)
- You can attend as many or as few meeting sessions as you'd like
- Faculty & staff can be reimbursed for the book if they submit a receipt

BU CTSI Fall Opportunities



BU Clinical & Translational Science Institute



BU CTSI Fall Opportunities

RFA- INTEGRATED PILOT CTSI GRANT PROGRAM, 2020–2021 CYCLE

Release Date: September 1, 2020 **Application due date:** **November 1, 2020, at 5 PM**

Earliest Activation Date: April 1, 2021, or July 1, 2021 (for DOM funded awards)

Designed to support innovative translational research projects, with a priority for team science.
Usually \$20k grants (single PI); up to \$50K for Team Science pilots with chance for follow on

VOUCHER PROGRAM

Release Date: September 1, 2020 **Application due date:** **Rolling until December 1, 2020**

Designed to support the short-term needs of research investigators whose time to conduct research has been negatively impacted by pandemic-related childcare/eldercare/family care and other home-related responsibilities. Assistance intended to allow investigators to complete a study, submit publications, generate preliminary data necessary for publishing findings, or write research grants.
Vouchers are up to \$5000; larger amounts can be considered.

Announcements

BMC Provider Profile Update Form

If you would like to add updates to your BMC Provider Profile Page, please fill out the [form linked here](#).

Form for Announcements and Newsletter Submissions

Are you interested in sharing news of your speaking engagements, awards, publications, events and other announcements with our section? Complete the intake forms linked below and we will be happy to advertise your requests:

[Announcement Submissions Form](#)

[Newsletter Submissions Form](#)

Available Career Opportunities as of October 2020:

- [Clinical Investigator, Hematology/ Hematological Malignancies](#)

