

WELCOME STUDENTS

Graduate Medical Sciences
Make A Difference.

GMS Orientation
August 31, 2021

BOSTON
UNIVERSITY



WELCOME TO GMS

Deborah Stearns-Kurosawa, PhD

Associate Provost and Associate Dean *ad interim*

Associate Professor, Pathology and Laboratory Medicine



Graduate Medical Sciences

SOME ADVICE

1

REMEMBER YOU ARE NOT ALONE

Talk to people

Ask questions

2

PLAN AHEAD

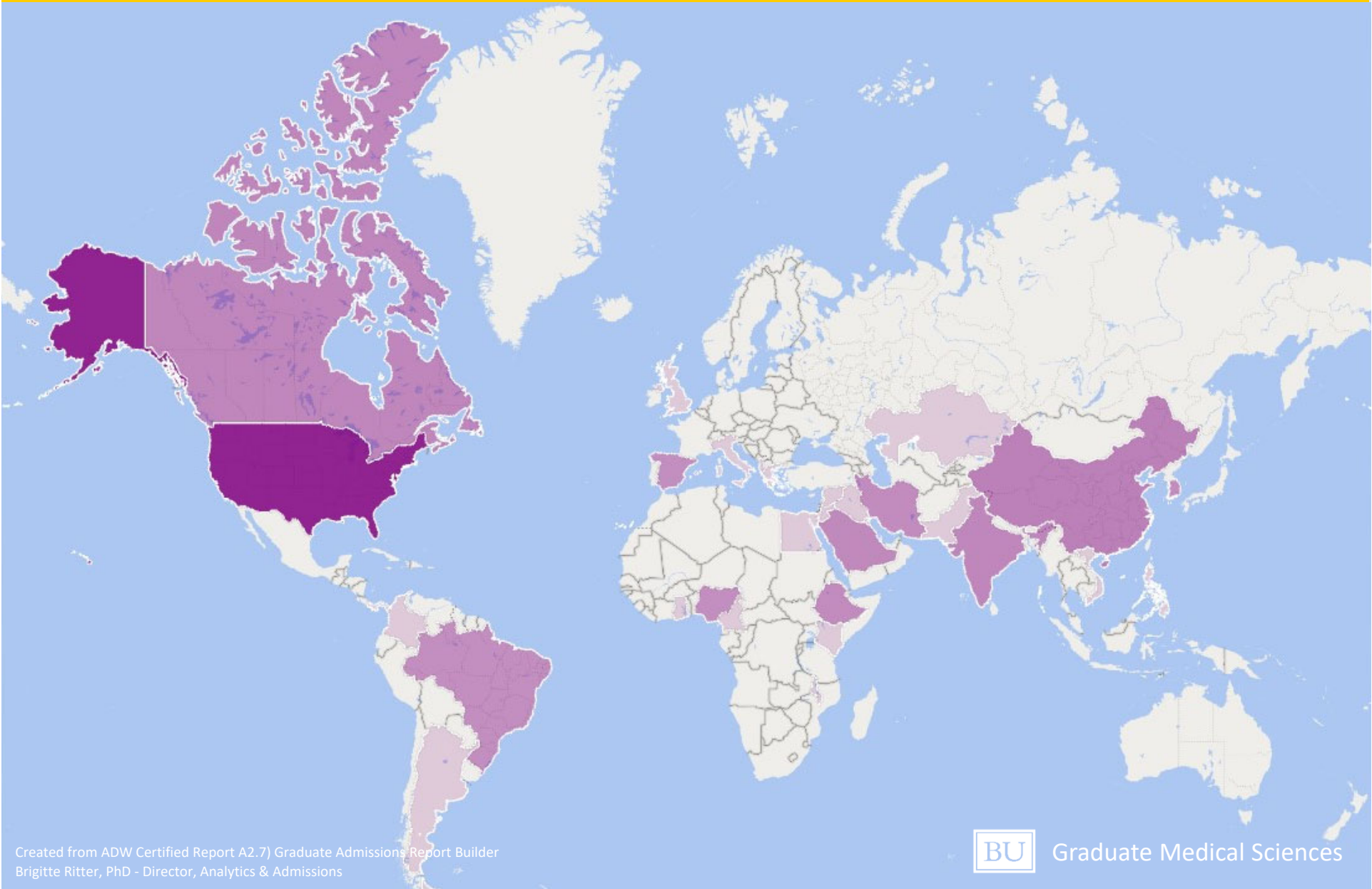
Use University resources; GMS
GMS Community Catalyst Center (C3)

3

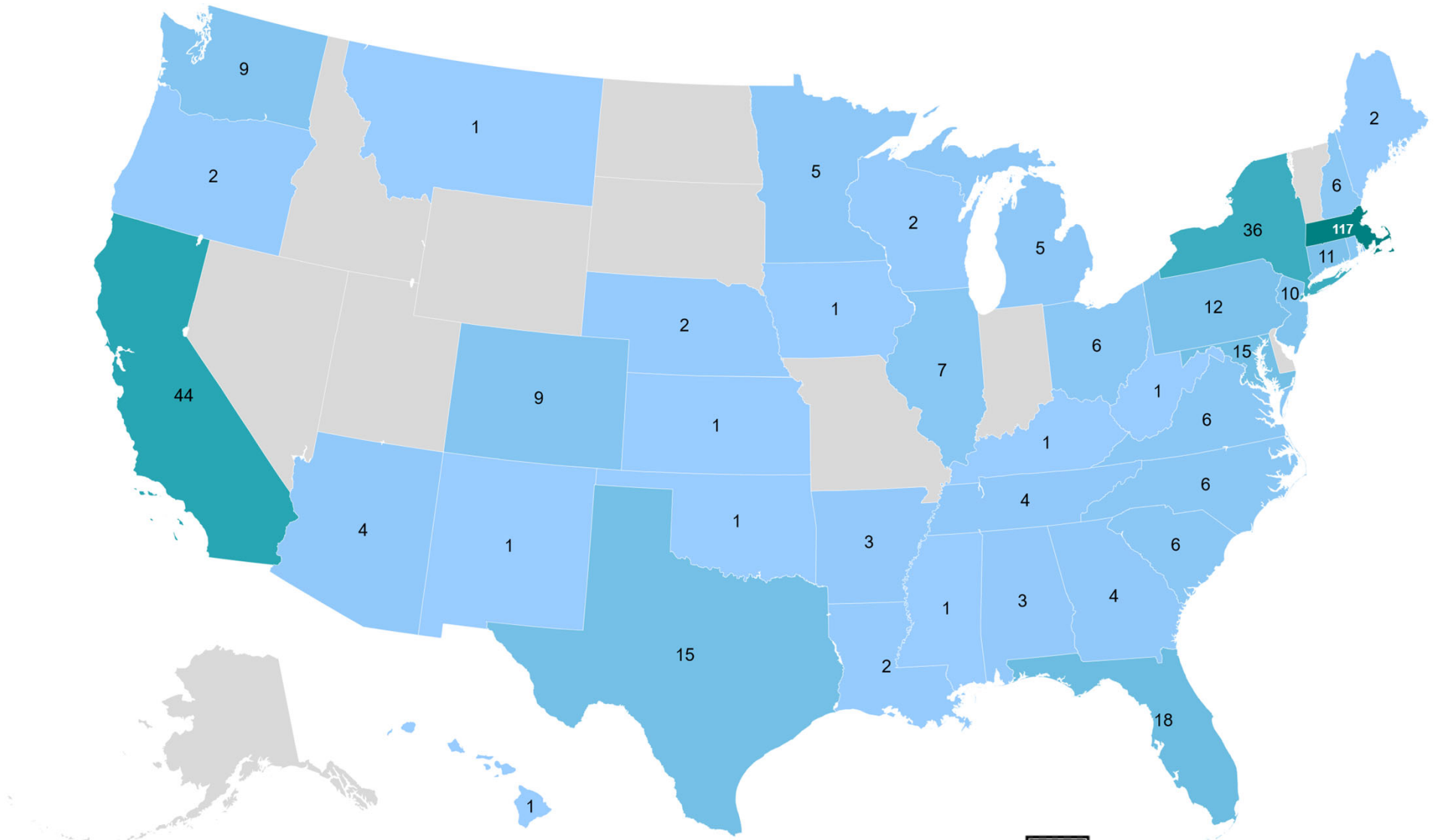
MAKE TIME TO HAVE FUN

Take care of your mental health

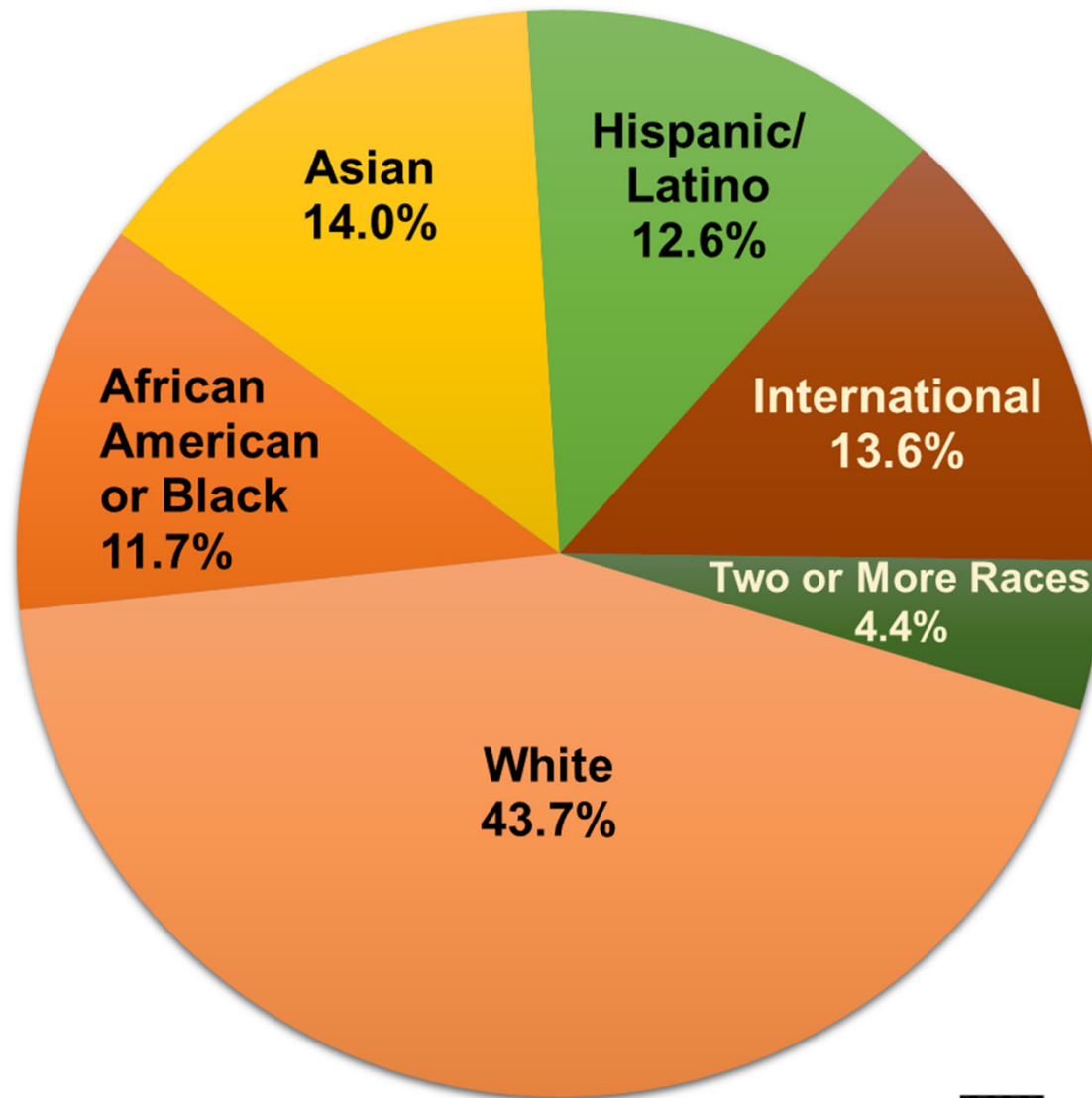
YOU'RE FROM 32 COUNTRIES



AND 41 STATES



YOU'RE FROM DIVERSE ETHNIC BACKGROUNDS



AND 193 UNDEGRADUATE INSTITUTIONS



GMS LEADERSHIP AND STAFF

GMS Offices: Room **L-317** - 3rd floor, School of Medicine Instructional Building (L building)



Theresa Davies

Assistant Dean,
Master's Programs



Barbara Schreiber

Assistant Dean,
Alumni Affairs



Greg Viglianti

Assistant Dean,
Operations



Andrew Henderson

Assistant Dean,
Research



Graduate Medical Sciences

GMS LEADERSHIP AND STAFF

Graduate Student Affairs



Kimberly Arena



Mina Moussavi



Hannah Andry

Analytics & Admissions



Shuchita Rao



Brigitte Ritter

Marketing & Communications

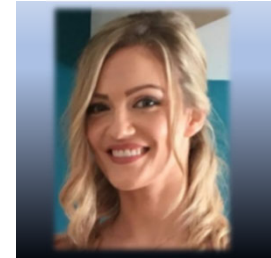


Sara Frazier

Business & Operations



Israel De La Cruz



Melanie Pebley

Registrar



Millie Agosto



Karen Francis



COVID-19 BRIEF NOTES

BU's safety response is multi-layered, driven by the science and public health experts at local, state and federal levels

~~Compliant~~



- Required vaccination or approved waiver
 - Upload in Patient Connect at Student Health Services!
- Daily symptom survey (green screen)
 - Weekly testing; L building, first floor, show green screen
 - On campus today? You should already have a negative test result
- Mask required at all indoor med campus locations unless eating
 - Eating in Chequers café (L bldg basement), Hiebert Lounge (L bldg, 14th floor), dept conference rooms & kitchenettes
 - No eating in classrooms or library