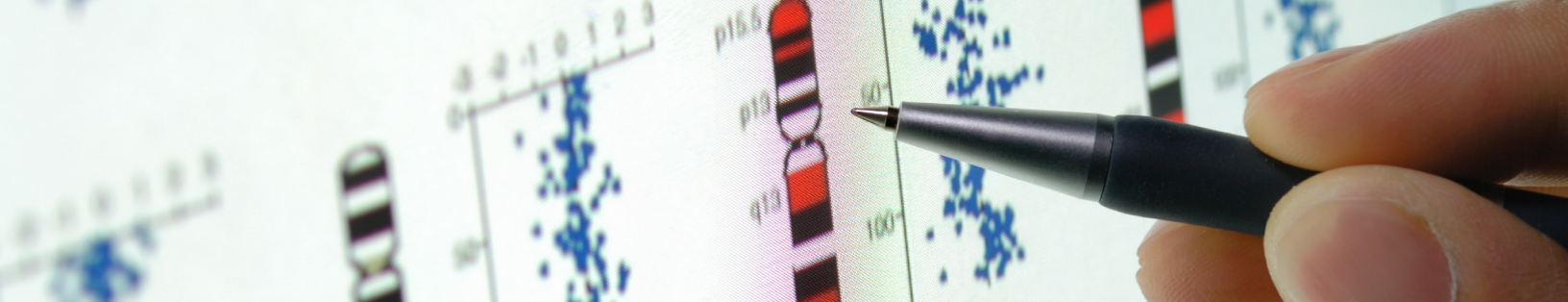




Boston University School of Medicine
Graduate Medical Sciences



MASTER OF SCIENCE IN **CLINICAL RESEARCH**



MASTER OF SCIENCE IN CLINICAL RESEARCH

Program Highlights:

- The program covers all aspects of clinical research including designing research studies, good clinical practice, actively managing patient-based research, biostatistics and data analysis, as well as regulatory- and compliance issues.
- The program requires 32 credits of course work; 22 required credits, including a practicum and capstone project, and 10 elective credits.
- Courses are offered through the Graduate Medical Sciences and delivered at BU's School of Medicine.
- Students can choose practicum experiences (a minimum of 240 hours of hands-on, field-based learning), from a broad range of academic and industry settings.
- Coursework emphasizes practical, applied learning. Faculty, all of whom are active practitioners in the field, share real world case histories, and there is a significant amount of group work, modeling the collaborative nature of clinical research.
- Full-time students have the opportunity to complete the program in one academic year including summer. Part-time students have up to five years to complete the components required for the degree.
- The degree is awarded by Graduate Medical Sciences at Boston University School of Medicine.

Program Overview

The Master of Science in Clinical Research trains individuals to fill the increasing demand for professionals at academic institutions and in the biotechnology, pharmaceutical and medical device industries who are capable of translating laboratory-based discoveries into research with human subjects. Graduates are well prepared to develop study protocols, work directly with subjects, interpret data, and train and educate others in the field.

Program graduates are qualified to sit for several of the clinical research certification exams offered by the Association of Clinical Research Professionals (ACRP) and the Society of Clinical Research Associates (SOCRA).

OUR MISSION

Inspire, Instruct, Innovate... The MS in Clinical Research program is dedicated to the discovery, development, and application of knowledge as it pertains to all areas of clinical research. Our mission is to foster an engaging and effective educational environment that promotes the pursuit of outstanding teaching and learning through formal classroom and practical training. With established collaborative relationships with pharmaceutical, biotech, and academic institutions, students are provided with unique opportunities to pursue clinical research in areas that are of personal and professional interest.





MASTER OF SCIENCE IN CLINICAL RESEARCH

CURRICULUM

Required Courses:

Management of Clinical Trials	4 credits
Regulatory and Compliance Issues	4 credits
Biostatistics with Computing	4 credits
Designing Clinical Research Studies	4 credits
Seminar in Clinical Research	2 credits
Capstone Research in Clinical Research	2 credits
Practicum in Clinical Research	2 credits

Elective Courses:

Good Clinical Practices in Clinical Research	4 credits
Ethical Issues in Clinical Research	2 credits
Applied Regression Analysis with Computing	3 credits
Professionalism and Scientific Writing	2 credits
Directed Studies in Clinical Research Bench to	2 credits
Bedside: Translating Biomedical Innovation	2 credits
from Laboratory to the Marketplace	4 credits
Molecules to Molecular Therapeutics	4 credits
Introduction to Medical Pharmacology	4 credits
Advanced General Pharmacology	2 credits
Drug Discovery and Development Introduction	2 credits
to Epidemiology	3 credits
Topics in Biostatistics	4 credits
The Biotechnology Industry	4 credits

Students may also choose from a wide variety of related elective courses offered through Graduate Medical Sciences. Students may also choose one elective course from outside of GMS.

Tuition, Financial Aid and Student Resources

For the most up to date information on tuition and fees please visit www.bumc.bu.edu/gms/students/financing-options. The Financial Aid Office at Boston University School of Medicine is available to assist students in identifying sources of financial support including subsidized and unsubsidized student loans. A limited number of scholarships are awarded each year to highly qualified students. The BU Office of Housing Resources provides information regarding housing, transportation, and Boston neighborhoods. For more details, visit www.bumc.bu.edu/ohr.



MASTER OF SCIENCE IN CLINICAL RESEARCH

Admissions Criteria

Applicants for admission to the M.S. in Clinical Research should:

Meet the requirements for a bachelor's degree from an accredited institution – an undergraduate degree with an academic background that includes science courses is recommended, with a grade point average of 3.0 or higher.

Submit the Test of English as a Foreign Language (TOEFL), International English Language Testing System (IELTS) or Duolingo scores if native language is not English and prior instruction was not in English.

The Clinical Research program no longer requires GRE or MCAT scores.

Application Deadline

We offer rolling admissions and review applications throughout the year. However, it is recommended that you submit your application by July 1 for September admission.

Application Requirements

A completed application consists of the application, a personal statement, three letters of recommendation, and official transcripts for all colleges and universities attended.

Please go to bumc.bu.edu/gms to apply online.

Interested in Sampling the Program?

Prospective students wishing to sample the program by completing one to two courses as a non-degree student are still required to complete the standard application.

Program Options Through the Boston University School of Medicine Graduate Medical Sciences Include:

- Part-time / Full-time Option
- MS Medical Sciences / MS in Clinical Research (MSMS/MSCR dual degree)
- Doctor of Medicine / MS in Clinical Research (MD/MSCR dual degree)
- Online Graduate Certificate Program

For more information contact:

Stacey Hess Pino, MS, MS
72 East Concord Street, Room L-317A
Boston, MA 02118
617-358-9528
sahess@bu.edu

