

Clinical Master's Programs

Boston University



Theresa A. Davies, Ph.D.
Assistant Dean, Masters Programs
Director, MS in Oral Health Sciences Program

tdavies@bu.edu

gmsbusm@bu.edu



Why BU and Graduate Medical Sciences?

- Leader in biomedical research and graduate education
- More than **900** graduate students
- Over 30 PhD, MA, and MS degrees
- 15 different departments and programs
- World-class urban teaching hospital Boston Medical Center

LOCATED AT BU SCHOOL OF MEDICINE

<https://www.bumc.bu.edu/gms/>

Clinical Masters Programs

PROGRAMS

Mental Health Counseling and Behavioral Medicine

(Licensure) (FT, 2 years)

Genetic Counseling

(Accredited) (FT, 2 years)

Bioimaging

Clinical (Registered MRI Technologist)

OR

Research focus

(FT, 1 year or PT, 2 years)

CAREER OPTIONS

Mental Health Counselors in private, public, or community healthcare settings ([brochure](#))

Genetic Counselors in private, hospital, and community settings ([brochure](#))

Imaging technology in healthcare

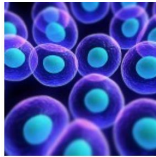
Research- pharmaceutical, biotech, academia, the military, & forensic science ([brochure](#))



Professional Masters Programs

Clinical Research

PROGRAMS



[Pathology Laboratory Sciences](#)

(FT, 2 year)



[Nutrition & Metabolism](#)

(FT, 1 year or PT, 2 years)



[Clinical Research](#)

(FT, 1 year or PT, 2 years)

CAREER OPTIONS

Employed in clinical and diagnostic labs, clinical research & academic settings, advance to doctoral or medical school ([brochure](#))

Clinical or basic sciences research in biotech, private/academic settings or further study towards a MD/DMD/PhD ([brochure](#))

Clinical research in healthcare, biotech, private/academic settings ([brochure](#))

Pre-Health Post-Bac Masters



PROGRAM

Medical Sciences (MAMS)

(FT, 1 or 2 year)

Oral Health Sciences (OHS)

(FT, 1 or 2 year)



CAREER OPTIONS

Medical school admission, clinical researcher, or public health
[\(brochure\)](#)

Dental school admissions
[\(brochure\)](#)

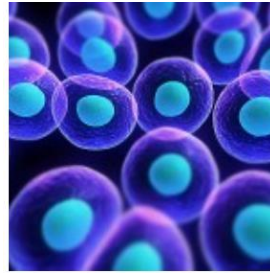
- Rigorous year of **biomedical coursework** to prepare for medical & dental school
- Develop **critical thinking** and **study & test taking skills**
- Gain **valuable experiences** through research, clinical, and community outreach
- **Professional development** through enrichment events

Boston University's M.S. in Oral Health Sciences (OHS) Program

**POST- BACS GIVE
YOU A SECOND
CHANCE!**

- **Improve academic credentials** by taking courses with BU's DMD I students.
- Rigorous coursework to challenge you and **improve study skills / time management**
- **Strong advising support**
 - Personalized advising, mentoring and AADSAS Application assistance
- Additional **Enhancement Opportunities**
- **Thesis and Capstone opportunities**
- **90% of OHS** graduates are successful in gaining admission to dental school



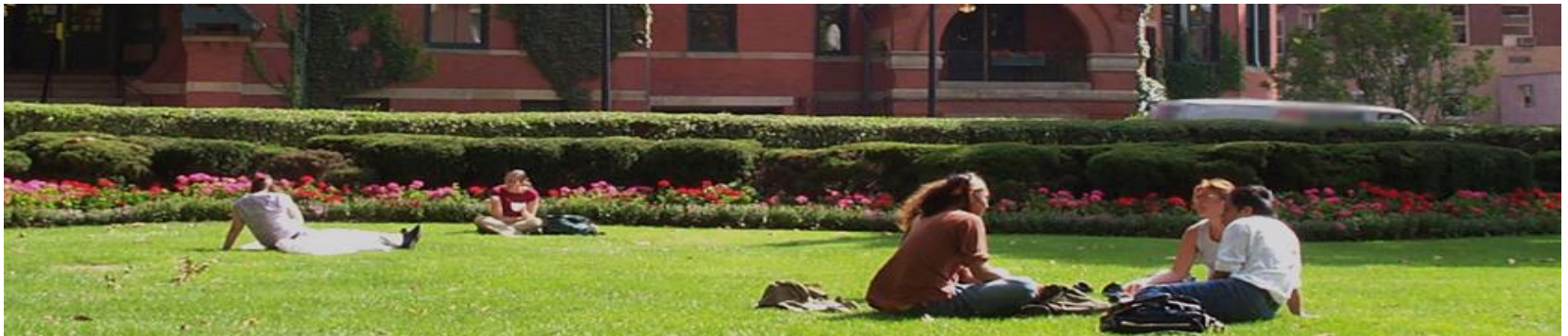


Questions about



career paths?





Shared learning with like-minded students across the medical campus

Collegial and collaborative environment

Graduate Medical Sciences Student Organization gives students the opportunity to voice questions, concerns, and ideas.





BOSTON

- College-oriented city
- Academic hub with rich cultural, intellectual, and recreational opportunities
- Mountains north and west; beautiful ocean beaches are a short drive to the Cape or Gloucester



What Are Schools Looking For?

What does “*Holistic Review*” mean?

- Academically strong student
- More than just the “numbers”
- Test scores and GPA

- Real interest in the program/career
 - Demonstrated interest by experiences

- Good fit for the school, program and their mission
 - GMS / BUSM / Boston Medical Center
 - Safety Net Hospital / Underserved
 - Research focused
 - Service -learning

More: What Are Schools Looking For?

YOUR EXPERIENCES MATTER

How many and what type of experiences

- Clinical
- Service
- Outreach
- Leadership
- Research
- Volunteer

DIVERSITY? ARE YOU A GOOD FIT?

Not just race & ethnicity

- Socioeconomic status
- Disadvantaged rural/health
- Family educational history
- Religion
- Political beliefs
- Gender Identity /LGBTQ
- Geographic
- Cultural background, heritage
- Distance Traveled
- Age

Admissions

We all have stories – They want applicants who are prepared academically

learned, grown, overcome and matured on their journey

Requirements

- Basic science pre-requisites
- DAT or MCAT or GRE (waived)
- Personal Statement
- Resume
- Letters
- Application – fee (fee waivers available)

Upcoming Events

- All GMS Spring Virtual Fair [March 9 from 11-2pm](#)
 - 15 Masters programs, Student Life, Financial Aid, Admissions Q & A, Diversity & MISO, 10 PhD programs
- MS Medical Sciences events –
 - [Upcoming events for spring](#)
- MS Oral Health Sciences
 - Informational Webinar – [March 17](#)
 - Student Panels [Feb 24](#) and [April 6](#)
- Mental Health Counseling
 - Watch their  [FaceBook Live](#) sessions
- Genetic Counseling recruitment starts in the summer/fall ([sign-up here](#))
 - [2/27/21 Career Day at Dana Farber Cancer Institute](#)



MEET OUT STUDENT PANEL

Naaila - MS in Bioimaging

Fatouma - MS Medical Science

Kenisha - MS in Oral Health Sciences

Nola - MS in Pathology Laboratory Sciences

Final Thoughts

Stay focused work
hard and you will
achieve your goals

- Be honest about your credentials
- Find a mentor, talk to your advisor
- Take a gap year if you need it to gain more experience or take extra classes
- Don't be afraid to ask questions of admissions folks
- Attend open houses, virtual fairs
- Plan your time, don't procrastinate when applying everything takes longer than you think!
- Good luck!

