

State of the Section – 2010

General Internal Medicine

Jeffrey H. Samet, MD, MA, MPH, Chief

Section of General Internal Medicine
Department of Medicine
Boston University School of Medicine
Boston Medical Center

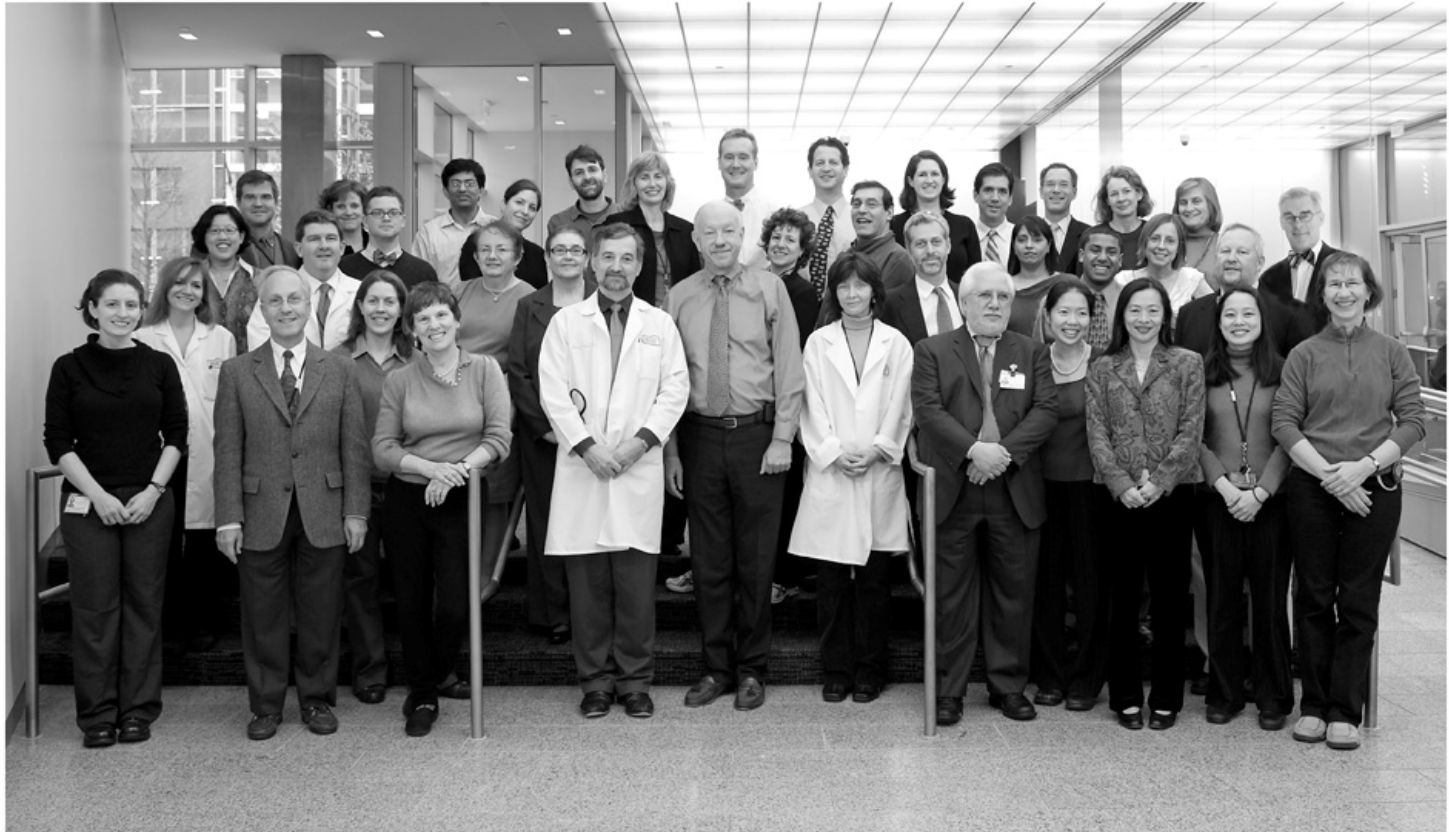
Overview

Section of General Internal Medicine

- People
 - Programs
 - Events
 - Accomplishments
-

People





THE SECTION OF GENERAL INTERNAL MEDICINE
2009-2010

Administration

- Debra Paarz – Administrator
 - Sarah (Gaboriault) Brunt – Admin Assistant
 - Lavondea Elow - WHG Admin Assistant
 - Veronica Forde – GIM Fellowship Coordinator
 - Ann Han – WHU Research Admin Manager
 - April Leon – Grants Manager
 - Lisa Morin – Executive Assistant
 - Jenay Nasif – Admin Assistant

 - Efficient, stable, helpful

 - Retirement – Nerveene Browne
– Sarah Ma
-

New Faculty 2009-2010

- 7 Primary Care (PC) Clin Educators
 - 4 Hospitalist Clin Educators
 - 1 Clinical Investigator
 - 3 Nurse Practitioners
-

New Faculty 2009-2010

PC Clin Educators



- Jonathan Berz, MD, MSc (YACC)
 - Medical School: Tufts University
 - Residency: Boston Medical Center, 2006
 - Fellowship: GIM, BUSM



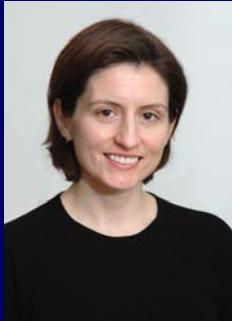
- Teresa Cheng, MD, MSc (WHG)
 - Medical School: SUNY at Stony Brook
 - Residency: Boston City Hospital, 1992
 - Neponset Health Center, 1994-2007
 - Fellowship: GIM, BUSM



- Tara Dumont, MD (WHG)
 - Medical School: University of Pennsylvania
 - Residency: Hospital of the University of Penn, 2009
-

New Faculty 2009-2010

PC Clin Educators



- Katherine Lupton, MD (YACC)
 - Medical School: UC San Francisco
 - Residency: UC San Francisco, 2008
 - Fellowship: UC San Francisco, GIM



- Ellen Meltzer, MD (YACC)
 - Med School: Thomas Jefferson University
 - Residency: Boston Medical Center, 2007
 - Fellowship: GIM, BUSM
-

New Faculty 2009-2010

PC Clin Educators



- Elizabeth Rourke, MD (YACC)
 - Medical School: UMass
 - Residency: Boston Medical Center, 2004
 - Mass General Hospital, 2005-2006
 - South Boston Health Center, 2006-2008



- Anita Ung, MD (DOB Medical Director)
 - Medical School: Johns Hopkins
 - Residency: Boston Medical Center, 2002
 - Faculty: University of Maryland, 2002-2009
-

New Faculty 2009-2010

Hospitalist Clin Educators



- Dominique Bayard, MD
 - Medical School: Mount Sinai
 - Residency: Boston Medical Center, 2009



- Anjali Grandhige, MD
 - Medical School: University of Alabama
 - Residency: Oregon Health Sciences University, 2007
-

New Faculty 2009-2010

Hospitalist Clin Educators



- Zaffar Haque, MD
 - Medical School: Trinity College, Dublin
 - Residency: UMass, 2009



- Clare Horkan, MD
 - Medical School: Trinity College, Dublin
 - Residency: Boston Medical Center, 2009
-

New Faculty 2009-2010

Clinical Investigator



- Timothy Naimi, MD, MPH
 - Medical School: UMass
 - Residency: Mass General Hospital combined IM-Pediatrics, 1991-1995
 - Indian Health Service/CDC, 1998-2009

New Faculty 2009-2010

Nurse Practitioners



- Patricia Flanagan, NP
 - Boston College, Connell School of Nursing



- Yolanda Perez-Shulman, NP
 - MGH Institute of Health Professions



- Meeky Kim, NP
 - Regis College
-

Faculty Recruits 2010-2011

- 2 PC Clin Educators
 - 2 Hospitalist Clin Educators
 - 1 Nurse Practitioner
-

Faculty Recruits 2010-2011

PC Clin Educators



- Rachel Stark, MD
 - Medical School: Boston University
 - Residency: Mount Sinai, 2005



- Devin Mann, MD
 - Medical School: New York University
 - Residency: NYU Bellevue, 2003
 - Primary appointment as Clin Investigator Section of Preventive Medicine
 - Secondary appointment, GIM
-

Faculty Recruits 2010-2011

Hospitalist Clin Educators



- Joanna Ghobrial, MD
 - Medical School: Wayne State University
 - Residency: Boston Medical Center, 2010



- Felicia Patch, MD
 - Medical School: Baylor College of Medicine
 - Residency: Boston Medical Center, 2010
-

Faculty Recruits 2010-2011

Nurse Practitioner



- Marie Ayer, NP
– Regis College

Planned Recruits

- 1-2 PC Clin Educators
- 1-2 PC Nurse Practitioners
- 1 Latino Health PC Clin Educator
- 1 CMG* PC Clin Educator
- 1-2 Hospitalist Clin Educators

*Commonwealth Medical Group

Departing Faculty

- Arlene Ash, PhD (adjunct, pending)
 - Dominique Bayard, MD
 - Leyda Delgado, MD
 - Nicolette Fontaine, MD
 - David Halle, MD (adjunct, pending)
 - Zaffar Haque, MD
 - Victoria Hester, MD
 - Beth Manning, MD (adjunct, pending)
 - Ellen Meltzer, MD
 - Joyce Panganamala, PA-C
 - Andres Solorza, MD
 - Daniela Winston, MD
-

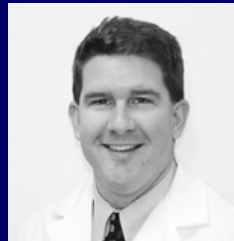
GIM Primary Care Leadership



- Peggy Chou, MD
 - Director, GIM Primary Care



- Elizabeth Dupuis, MD
 - Director, Women's Health Group (WHG)



- Jason Worcester, MD
 - Director, Yawkey Primary Care Clinic



- Steven Abreu, MD
 - Director, Primary Care Clinic, Commonwealth Medical Group (CMG)



- Anita Ung, MD
 - Director, Doctor's Office Building (DOB) Primary Care Clinic
-

YACC Primary Care Team Leadership



- Craig Noronha, MD – Team 1



- Susan Phillips, MD – Team 2



- Leila Obeid, MD – Team 3



- Claudia Nader, MD – Team 4
-

Vice-Chairs in Department of Medicine

- Angela Jackson, MD
 - Vice Chair for Education
 - Raj Krishnamurthy, MD
 - Vice Chair for Outpatient Medicine
 - Nila Radhakrishnan, MD
 - Vice Chair for Inpatient Medicine
 - Jeffrey Samet, MD, MA, MPH
 - Vice Chair for Public Health
 - Jay Orlander, MD, MPH
 - Associate Chief, Medical Service, VA Boston Healthcare System
-

Clinic Staff Leadership

- Jennifer Furlonge, Administrative Director
- Maureen Johnston, RN, Nurse Manager
- Dina Vagenas, Master Scheduler
- Eunice Espinal, Call Center Supervisor

Special programs/locations:

- Marcelle Denis, ACC Team Coordinator
 - Colleen Labelle, RN, OBOT
 - Roberta Gately, RN, Team 1 Medical Home Supervisor
 - Judy Morrissey, RN, Team 2 Medical Home Supervisor
 - Hughette Joseph, RN, Team 3 Medical Home Supervisor
 - Carmen Teso, RN, Team 4 Medical Home Supervisor
 - Regina Chin, DOB Assistant Nurse Manager
-

Clinic Nurse Practitioners & Physician Assistants

■ YACC

- Susan Morrissey, NP
- Gertha Dabady, NP

■ WHG

- Eunice MacAllister, RNC
- Betsy Walsh, RNC

■ DOB 5

- Cleo Ferrao, NP
- Xiuhuan Yan, NP

■ IMPAC, DOB 7

- Fabienne Paul-Blanc, NP
 - Jean Delva, NP
 - Jan Fleischman, NP
 - Marie Ayer, NP
 - Patricia Flanagan, NP
 - Meeky Kim, NP
 - Yolanda Perez-Shulman, NP
-

Primary Care Practice Committee

- Chava Chapman, MD
- Peggy Chou, MD
- Peter Davidson, MD
- Tara Dumont, MD
- Beth Manning, MD
- Renee McKinney, MD
- Mitch Medow, MD
- Craig Noronha, MD
- Susan Phillips, MD
- Anita Ung, MD
- Jason Worcester, MD
- Dan Newman, MD

Agenda items for GIM standardization, 2009-2010:

- clinical correspondence
 - problem list
 - lab order sets
 - med lists
-

Section of GIM Leadership



- Jeffrey Samet, MD, MA, MPH
– Chief



- Peter Davidson, MD
– Associate Chief
-



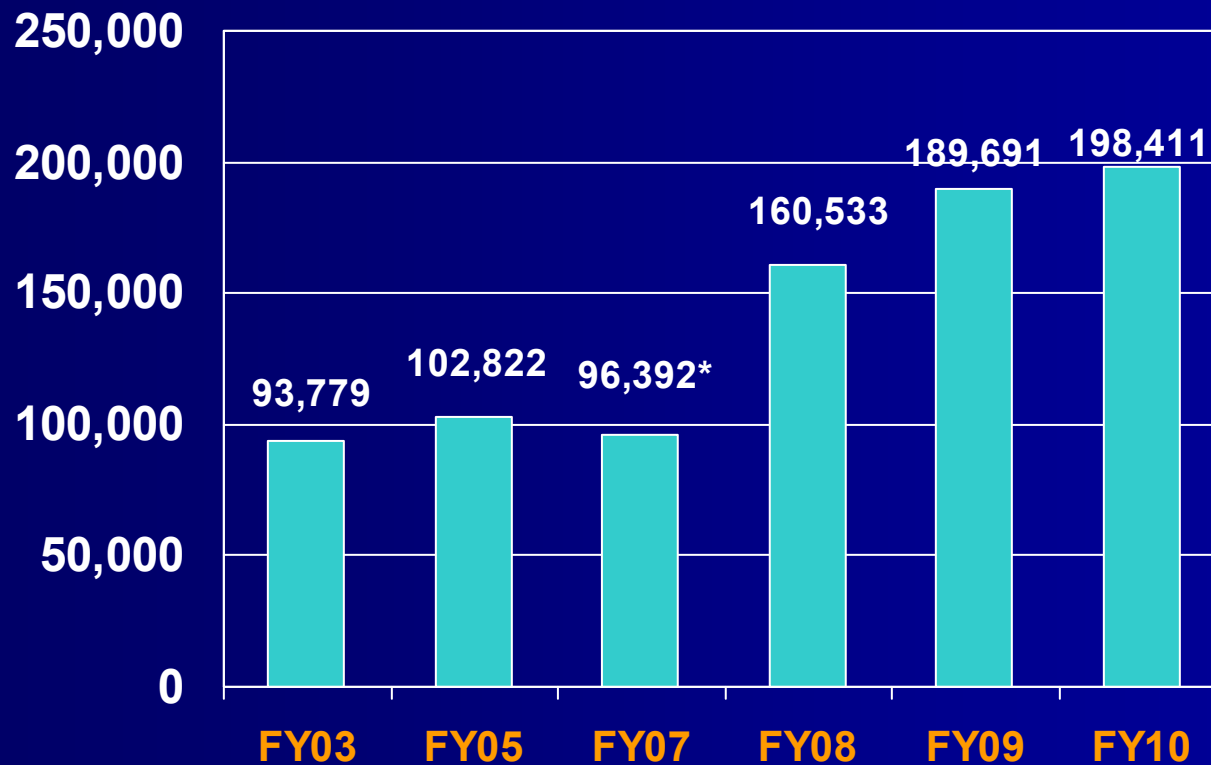
Programs



Primary Care

- Yawkey (BMC-YACC)
 - Doctor's Office Building (BMC-DOB)
 - Women's Health Group (BMC-WHG)
 - Commonwealth Medical Group (CMG)
 - Neighborhood Health Centers (NHC)
-

BMC Outpatient and Inpatient Clinical Productivity: Total Work RVUs (wRVUs)



*Urgent Care clinic moved to Emergency Medicine

GIM

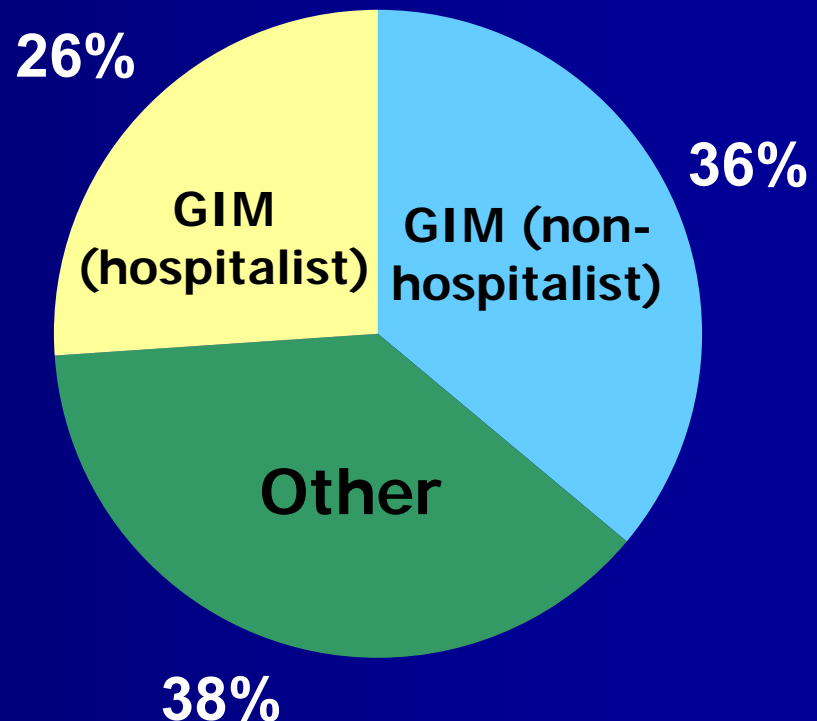
Outpatient Visits – BMC

	FY03	FY05	FY07*	FY08	FY09	FY10	% Change (prior year)
YACC	42,066	42,405	35,590	43,996	46,896	54,983	+17%
DOB	19,713	21,808	19,880	24,239	26,220	29,587	+13%
WHG	6,129	7,792	8,040	9,514	9,442	11,767	+25%
IMPAC				7,339	8,983	10,021	+12%
CMG				6,094	6,201	6,809	+10%
Total	67,908	72,005	63,510	85,088	97,742	113,167	+16%

* Urgent Care clinic moved to Emergency Medicine

GIM Attending Coverage at BMC 2009-2010

- 62% of inpatient medicine blocks are covered by GIM*



*not including ICU, CCU, Geriatrics, & Oncology Services

Innovations in Primary Care 2009-2010

New:

- Hepatitis C Treatment Clinic
- Diabetes Team in Primary Care

Established:

- Patient Navigator—Breast Health
 - Screening for alcohol and drugs via MASBIRT
 - Office Based Opioid Treatment
 - Diabetes group appointments
 - Smoking cessation/behavioral medicine
 - Refugee Health Clinic
-

Ongoing Areas of Operational Improvement in Primary Care

- Patient flow
 - Nursing roles and structure revisions
 - Call center process improvements
 - Extended hours
 - New patient access within 30 days
 - Pre-registration to improve check-in
-

Physician Productivity in Primary Care

- Feedback provided on:
 - wRVU
 - Visits per sessions
 - Expected # of sessions
 - Panel Size
 - New patient visits
-

Primary Care Quality Initiatives for 2010-2011

- Opioid Management Clinic
 - QI resident education projects
 - Improved Diabetes foot exam metric
-

Carl J. and Ruth Shapiro Ambulatory Care Center



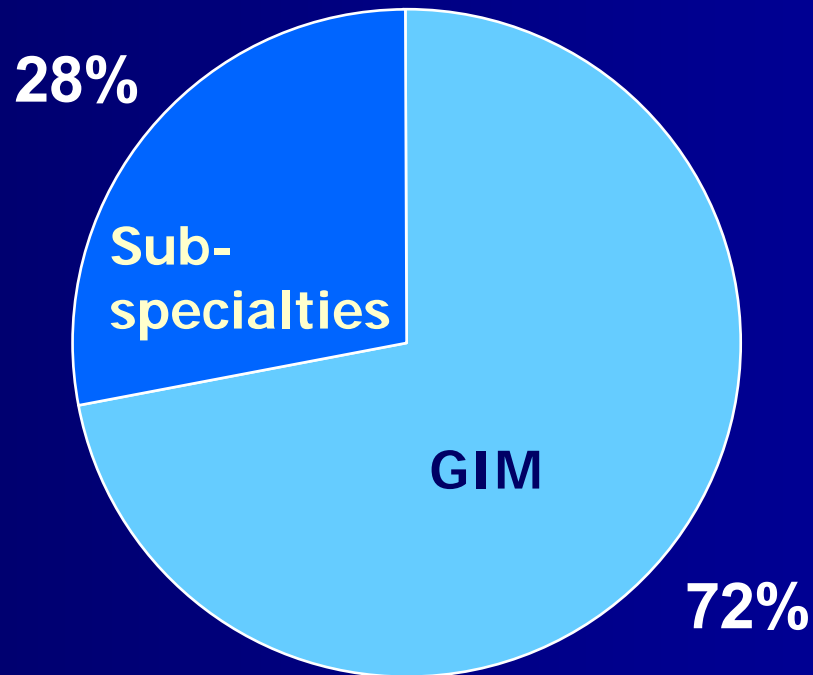
New site of PC beginning Spring 2011

GIM Clinic Attending

Primary care clinic sessions at BMC in which BUSM students are precepted

Academic Year	# Clinic Sessions	% Change (prior year)
2002 – 2003	700	--
2003 – 2004	750	+7
2004 – 2005	640	-14
2005 – 2006	482	-25
2006 – 2007	399	-17
2007 – 2008	502	+25
2008 – 2009	410	-18
2009 – 2010	589	+43

BUSM Precepting DOM Clinical Sessions 2009-2010



ICM* Teaching 2009-2010

- Jonathan Berz, MD, MSc
- Daniel Chen, MD, MSc
- Teresa Cheng, MD, MSc
- Tara Dumont, MD
- Suparna Dutta, MD
- Wendy Gray, MD
- Karen Lasser, MD, MPH
- Karsten Lunze, MD, MPH
- Kate Lupton, MD
- Ellen Meltzer, MD
- Azadeh Nasseh, MD
- Judith Tsui, MD, MPH
- Jason Worcester, MD

*Introduction to Clinical Medicine

EBM* Teaching 2009-2010



- Jonathan Berz, MD, MSc



- Daniel Chen, MD, MSc



- Julien Dedier, MD, MPH



- Warren Hershman, MD, MPH



- Karsten Lunze, MD, MPH



- Craig Noronha, MD

*Evidence Based Medicine

Ambulatory Student Report 2009-2010

- Thomas Barber, MD
 - Daniel Chen, MD, MSc
 - Peggy Chou, MD
 - Kathleen Crowley, MD, MPH
 - Leyda Delgado, MD, MPH
 - Melissa DiPetrillo, MD
 - Bernie Kreger, MD, MPH
 - Renee McKinney, MD
 - Dan Newman, MD
 - Craig Noronha, MD
 - Leila Obeid, MD
 - Christine Phillips, MD
 - Susan Phillips, MD
 - Jason Worcester, MD
 - Laura Wung, MD
-

DOM Morning Report

Attendings 2009-2010

- Caslowitz
 - Halle
 - Hershman
 - Hughes
 - Hylek
 - Jackson
 - Krishnamurthy
 - Manning
 - Meisel
 - Radhakrishnan
 - Ramani
 - Saitz
 - Samet
 - Walley
 - Witzburg
 - Weigel
-

Internal Medicine Pre-operative Assessment Center (IMPAC)

- GIM pre-operative medicine service
 - Co-Directors (2009-2010):
 - Craig Noronha, MD
 - Alok Kapoor, MD, MSc
 - Faculty:
 - Melissa DiPetrillo, MD
 - Peter Davidson, MD
 - HMU and inpatient consult attendings
-

Primary Care Training Program 2009-2010

- PGY 1 – Anitha Bhat, Lydia Efird, Tiffany Groover, Irene Rahman, Swati Shroff
 - PGY 2 – Magalie Bruneus, Alexis Cavic, Ben Han, Haena Min, Rachel Ngermaneepothong, Sarah Sloan
 - PGY 3 – Andrew Feda, Priya Joshi, Rachel King, Vasudev Mandyam, John Myers, Dylan Stentiford
 - Chief Resident: Ryan Zitnay, MD
 - Director, PC Training Program: Angela Jackson, MD
-

Department of Medicine Internal Medicine Residency Program Directors from GIM

2009-2010

- David Halle, MD, Program Director

2010-2011

- Kate Lupton, MD, Associate Program Director
- Rachel Stark, MD, Assistant Program Director;
Assistant Director, Primary Care Training Program

2009-2011

- Subha Ramani, MD, Associate Program Director
 - Charlene Weigel, MD, Associate Program Director
-

GIM BUSM Medical Student Admission Committee Members 2009-2010

- Robert Witzburg, MD, Assoc. Dean
 - Susan Phillips, MD
 - Nila Radhakrishnan, MD
 - Christine Phillips, MD
 - Richard Kalish, MD, MPH
 - Peter Davidson, MD
 - Kathleen Crowley, MD, MPH
 - Catherine Rich, MD
-

GIM Presence at Other BUMC Clinical Sites

- ID Clinic
 - International Clinic
 - Anticoagulation & Thrombosis Service
 - McInnis Group/Woods Mullen Shelter
 - Frontage Road Methadone Program
 - Transitional Opioid Program (TOP)
 - Belkin Breast Health Center (Moakley)
 - Boston Community Medical Group
-

GIM Presence at BMC Information Technology

- Daniel Newman, MD
 - Chief Medical Information Officer
- Christopher Shanahan, MD, MPH
 - Director, Research and Systems Innovation Unit (RISU)
 - Physician Analyst, Knowledge Management

GIM Presence at Mass. Dept. of Public Health (MDPH) and Boston Public Health Commission (BPHC)

- Michele David, MD, MBA, MPH, Member, Massachusetts Public Health Council
 - Nancy Norman, MD, MPH, Medical Director, BPHC
 - Alex Walley, MD, MSc, Medical Director Frontage Road Methadone Program
 - Sheila Chapman, MD, Physician Frontage Road Methadone Program
 - Jeffrey Samet, MD, MA, MPH, Medical Director, BPHC, Addictions Prevention, Treatment and Recovery Support Services
-

GIM Conferences

Course Directors

- **GIM Grand Rounds***
Bernie Kreger, MD, MPH
- **Ambulatory Morbidity and Mortality Conference†**
Julie Crosson, MD and Raj Krishnamurthy, MD
- **Research in Progress (RiP)†**
Michael Paasche-Orlow, MD, MPH
- **MISU Conference‡**
Julien Dedier, MD, MPH
- **Advocacy, Public Policy and Women's Health Series§**
Michele David, MD, MBA, MPH
- **CARE Unit Journal Club‡**
Rich Saitz, MD, MPH
- **Health Disparities Grand Rounds§**
Karen Lasser, MD, MPH

* weekly

†biweekly

‡monthly

§ quarterly

**Boston University School of Medicine
Department of Medicine
Medical Grand Rounds by GIM Faculty
2009-2010**



**Daniel Alford, MD, MPH
Opioids for Chronic Pain: Maximizing
Benefits and Minimizing Risks
(Feb 19, 2010)**

General Internal Medicine (GIM)/Family Medicine (FM) Fellowship Preventive Medicine (PM) Residency Program Leadership



- Jane Liebschutz, MD, MPH – Director



- Brian Jack, MD – Director, FM Fellowship



- Michael Paasche-Orlow, MD, MPH – Associate Director, GIM Fellowship



- Jay Orlander, MD, MPH – Associate Director for Education, GIM Fellowship



- Jonathan Berz, MD, MSc – Associate Director, PM Residency

GIM/FM Fellowship & Preventive Medicine Residency Programs: 1st Year, 2010-2011

- Nicole LaRue, MD
 - Residency: Primary Care Internal Medicine, Boston Medical Center, BUMC
 - Christine Pace, MD
 - Residency: Primary Care Internal Medicine, Brigham & Women's Hospital, Boston
 - Kasia Budzynska, MD
 - Residency: Family Medicine, St John Hospital, Detroit, MI
-

GIM Fellowship/Preventive Medicine Residency Programs: 2nd and 3rd Year, 2010-2011

2nd Year:

- Wendy Gray, MD
 - Residency: Cambridge Health Alliance, Cambridge, MA
- Karsten Lunze, MD, MPH
 - Residency: Pediatrics, Johns Hopkins, Baltimore, MD
- Azadeh Nasseh, MD
 - Residency: Lenox Hill Hospital, New York, NY

3rd Year:

- Dhayana Dallmeier Rojas, MD
 - Residency: Pennsylvania Hospital, Philadelphia, PA
 - Amy Linsky, MD
 - Residency: University of Pennsylvania, Philadelphia, PA
-

Geriatric Center of Excellence Faculty Fellowship

- **2009-2010**
 - Sheila Chapman, MD; Melissa DiPetrillo, MD; Claudia Nader, MD
 - **2008-2009**
 - Henri Lee, MD
 - **2007-2008**
 - Charlene Weigel, MD; Susan Phillips, MD; Leila Obeid, MD
 - **2006-2007**
 - Nila Radhakrishnan, MD
 - **2005 – 2006**
 - Christine Phillips, MD; Jeffrey Greenwald, MD
 - **2004 – 2005**
 - Michael Paasche-Orlow, MD, MPH
 - **2003 – 2004**
 - Jennifer Hughes, MD
-

GIM Units

- Health Care Disparities Research Unit
 - Clinical Addiction Research & Education (CARE) Unit
 - Women's Health Unit (WHU)
 - Medical Information Systems Unit (MISU)
 - Hospital Medicine Unit (HMU)
 - Community Medicine Unit (CMU)
-

Healthcare Disparities Research Unit

Director: Nancy Kressin, PhD



- Conduct research to understand and alleviate inequities in health care, and to ensure the provision of exceptional health care without exception.
 - Facilitates the training of a new generation of healthcare equity researchers. Program faculty are intellectual advocates and leaders for health equity research both locally and nationally.
 - Collaborations:
 - Karen Lasser, MD, MPH, Amresh Hanchate, PhD, Alok Kapoor, MD, Adam Rose, MD, MPH (Effects of MA Health Reform on Cardiovascular Outcomes)
 - Bill Adams, MD, MPH, Christopher Shanahan, MD, MPH, Michael Paasche-Orlow, MD, MPH, Amresh Hanchate, PhD (and UMass colleagues) (Massachusetts Health Disparities Monitoring System)
 - Elaine Hylek, MD, MPH (Disparities in Adherence to Anticoagulation Therapy and Monitoring)
-

Clinical Addiction Research and Education Unit

Director: Richard Saitz, MD, MPH



Clinical:

- Office Based Opioid Treatment (OBOT)
- Methadone maintenance
- Transitional Opioid Program (TOP)
- Chronic care management (FAST-PATH)
- Screening Brief Intervention and Referral to Treatment (MASBIRT)– collaboration with Massachusetts BSAS

Research:

- Screening and brief intervention for drug use in primary care RCT(ASPIRE)
- Addiction Chronic Disease Management RCT (AHEAD & FAST-PATH)
- Effects of alcohol across lifetime – collaboration with Framingham Study and Section of Preventive Medicine
- Electronic approaches to alcohol problems – collaboration with MISU and BU psychology
- HIV prevention in substance abusers – collaboration with St. Petersburg State Pavlov Medical University, Russia
- Prescription drug abuse and interpersonal trauma
- Suboxone Transition to opioid program (STOP) – collaboration with Brown University

Education:

- MD addiction education (NIDA R-25: AODHealth & ACT Websites; CRIT) (National Board of Med Examiners initiative to improve USMLE exam)
- Med student research program, resident block rotation, addiction journal club
- Addiction medicine fellowship, K awardee
- NIDA Center of excellence/Med school consortium
- National mentoring (methadone, buprenorphine)
- American Board of Addiction Medicine leadership

Policy:

- ASAM: Confidentiality regulations as they apply to integrated care; addiction diagnostic terminology
- Quality of addiction care/performance measures (Washington Circle)

Women's Health Unit

A National Center of Excellence in Women's Health
Chief: Karen Freund, MD, MPH



- Clinical
- Research
- Public Policy/Community Outreach
- Medical Education/Faculty Development

- **Faculty:** Tracy Battaglia, MD, MPH; Phyllis Carr, MD; Chava Chapman, MD; Teresa Cheng, MD, MSc; Michele David, MD, MBA, MPH; Tara Dumont, MD; Elizabeth Dupuis, MD; Andrea Kronman, MD, MPH; Eunice MacAllister, RNC; Renee McKinney, MD; Bonnie Sherman, PhD; Betsy Walsh, RNC

Medical Information Systems Unit

Chief: Robert Friedman, MD



- Performs research and provides education and training in medical informatics (computer applications in medicine and public health)
 - Automated programs in primary prevention by reducing behavioral risk factors for diseases (smoking, alcohol, diet, physical activity)
 - Automated programs for patients with chronic disease that support their optimal self-care, monitor disease, and notify responsible clinicians about clinically significant problems

Hospital Medicine Unit

Director: Nila Radhakrishnan, MD



Faculty: Daniel, Grandhige, Ghobrial, Horkan, Hughes, Kapoor, Lee, Meisel, Patch, Radhakrishnan, Rao, Solorza, Syed, Weigel

- Quality Improvement (CHF, pneumonia)
- Inpatient electronic documentation
- Perioperative Medicine
- Research in Periop Medicine for Geriatric patients
- Faculty development on inpatient teaching and feedback
- Palliative care
- Transitions of Care
- CIWA protocol
- Uncovered service in ICU
- Mortality Reduction Project
- Night Float education and Evening Nocturnist Program
- Residency Education
- Medical Student Education

Community Medicine Unit

Director: Christopher Shanahan, MD, MPH, F.A.C.P.



- **BMC Community-Based Provider Network**
 - Oversee: BMC Credentialing & PPE of Community-based Providers
 - Support: Relationship between DOM & Community-based Providers & CBOs
 - Support: BU Academic Appointments of Community-based Faculty
 - Provide: Career counseling (Medical Student, House Officers, Fellows)
 - Represent: Community-based Providers at DOM Faculty Development & Diversity Committee
 - Represent: Community-based Providers and Organizations at DOM Quality Council
- **Training**
 - Oversee: BMC Joint Hire Program
 - Support: Podcasting of GIM Grand Rounds (Peter Smith M.D., EBNHC)
 - Collaborate: International Primary Care Training Institute (Yr 2)
 - Collaborate: Residency Program to promote Primary Care
 - Jointly Develop: BUSM-BUSPH Course - **Leading Community Health Initiatives: Medicine and Public Health as Partners** (Yr 2)
- **Research**
 - Collaborate: Health Care Disparities Research Unit
 - Collaborate: Mass Healthcare Disparities Registry
- **Professional Policy & Advocacy**
 - Collaborate: Mass-ACP Governor's Council to promote Internal Medicine
 - Participate: Development of EOHHS Primary Care Medical Home pilot grants

Academic Month for PC Clin Educators

- Eligibility
 - 7-8 sessions in primary care
 - Maintain clinical threshold target
 - Activity
 - 4 week block with academic project pre-defined and clinical work decreased to 2 sessions/week
 - FY 2009-2010 – Leila Obeid, MD
 - Blood Pressure Measurement Technique Standardization
-

Incentive Plans 2009-2010

- **Clinical:** RVU and FTE-based
 - **Research:** indirect costs-based
-

Priorities for the Section 2009-2010

- Set the Hospital Medicine Unit on an enhanced academic course with challenging wRVU targets
- Work with GIM clinical investigator faculty to achieve funding for non-clinical activities

A-

A-

Priorities for the Section 2009-2010

- Elevate the Primary Care practice function to achieve departmental goals
 - Expand current evening sessions **A-**
 - Create Saturday urgent care sessions **I**
 - Use panel size metrics to expand PC MD patient panels **A**
 - Build a high functioning PC phone room **A**
 - Improve quality scores **C**
-

Priorities for the Section 2009-2010

- Obtain funding for ongoing GIM fellowship activities and recruitment of high quality fellows **B-/A**
 - Transition IMPAC into the next phase with new leadership for its MD team **A**
 - Development of a GIM section within the Boston VAMC **D**
 - Creation of a more formal mentoring program for junior clinician educator faculty **B**
-

Priorities for the Section

2010-2011

- A successful transition into the Shapiro Ambulatory Care Center for all GIM Primary Care practices
 - Stabilization of the Hospital Medicine Unit faculty and their responsibilities
 - Maintenance of the high quality and productivity of the outpatient clinical faculty while adjusting to the changing portfolio of expectations
-

Priorities for the Section

2010-2011

- Successful acquisition of external grant support to maintain and grow the clinical research activities of the Section
 - Successful acquisition of external grant support to maintain and grow the fellowship training infrastructure of the Section (GIM/Family Medicine, Preventive Medicine, Women's Health, IT and Addiction Medicine)
-

Priorities for the Section

2010-2011

- Select leadership for Palliative Care and grow its clinical activities while developing a training program to share among GIM, Geriatrics and Oncology
 - Establish a primary mentor and mentee list accounting for every GIM faculty with an academic rank below Professor
 - Stay on track with >100 annual peer reviewed publications by GIM faculty
-

Events



Mark Moskowitz Memorial

Visiting Professor

Friday, March 26, 2010



John Rich, MD, MPH
Chair and Professor
Health Management and Policy
Drexel University School of Public Health

SGIM Grand Rounds

Trauma, Adversity and Health: The Role of Primary Care

Medical Grand Rounds

Wrong Place, Wrong Time: Trauma, Violence and Young Black Men

Family Winter Festival February 2010



Endicott Estate, Dedham

Family Winter Festival



Primary Care Training Institute at BU (PCTI@BU)

**Институт Амбулаторной Медицины
Бостонского Университета**

October 5 – 15, 2009

**Christopher Shanahan, MD, MPH
John Noble, MD
*Co-directors***

6 attendees in 2009

Russian Physician-Executives training course on topics
concerning the creation and management of state-of-the-art
Primary Care Practices

Primary Care Holiday Party

Thanks to:

Chava Chapman
Peggy Chou
Elizabeth Dupuis
Jen Furlonge
Mitch Medow

Ellen Meltzer
Craig Noronha
Judy Tsui
Anita Ung
Jason Worcester

Society of General Internal Medicine (SGIM) National Meeting 2010



Minneapolis, MN

SGIM National Meeting 2010

FRIDAY, APRIL 30, 2010, cont.

[Poster Sessions]

Title: Programs offering financial incentives to patients reduce per capita health care spending

Session E

Time: 2:00PM - 3:30PM

Room: Ballroom A/B

Authors: Karsten Lunze, Michael Pascho-Orlow

Title: Association of Past Incarceration with Substance Use Consequences and Health Care Utilization Among People with Substance Dependence

Session 3

Time: 5:00PM - 7:30PM

Room: Ballroom A/B

Authors: Nicole Redmond, R. Hicks, Debbie Cheng, D. Allensworth-Davies, Jeffrey Samet, Richard Saiz

Title: Adoption of Vertical Strips Method for Performing Clinical Breast Exams Among Academic Generalist Physicians

Session 3

Time: 5:00PM - 7:30PM

Room: Ballroom A/B

Authors: Teresa Cheng, Karen Freund, Michael Winter, Jay Orlander

Title: Factors Contributing to Extreme Warfarin Dose Variation

Session 3

Time: 5:00PM - 7:30PM

Room: Ballroom A/B

Authors: Lyndonna Marrast, Mary Evans, Elaine Hylek, Lori Henault, Al Oronoff, Adam Rose

[Workshops]

Title: When Partner Violence is Possible: Remembering To Detect This Hidden Agenda Early In Your Vulnerable Patients

Workshop WE03 Health Disparities/Vulnerable Populations

Time: 2:00PM - 3:30PM

Room: M100 C/D

Coordinator: Amy Weil, MD

Faculty: Anuradha Paranjape, Nisufur Varjivand, Diane Morse, Megan Gerber

Title: Communicating with Patients with Intellectual Disabilities and Neurodevelopmental Disorders (IDND)

Workshop WF02 Health Disparities/Vulnerable Populations

Time: 4:00PM - 5:30PM

Room: 201 A/B

Coordinator: Wendy Gray

Faculty: Deborah Dreyfus, Paul Remy

[Interest Groups]

Title: Update in Pain Medicine

Concurrent Session CUE

Time: 2:00PM - 3:30PM

Coordinator: David Alford

Faculty: Matthew Bair, Ian Chen, Erin Krebs, Jane Liebschutz, Christina Nicolaidis

SATURDAY, MAY 1, 2010

[Oral Sessions]

Title: Cost-Effectiveness Based Pricing for Dabigatran for the Primary Prophylaxis of Stroke in Elderly Patients with Atrial Fibrillation

Session G4: Joint SGIM and Society for Medical Decision Making

Time: 11:00AM - 11:15AM

Room: Room 200D

Presenter: Rajesh Patel, Mitchell Medow

[Interest Groups]

Title: Pain Medicine Interest Group

Interest Group Session IS15

Time: 7:30AM - 8:30AM

Coordinator: David Alford



SECTION OF GENERAL INTERNAL MEDICINE BOSTON UNIVERSITY SCHOOL OF MEDICINE

Presentation Summary

33rd Annual Meeting
Society of General Internal Medicine

[Minneapolis, Minnesota]
[April 28 - May 1, 2010]

ABOUT US

Begun in the late 1970's, the Section now has over 100 faculty members and an active General Internal Medicine Fellowship Program with a > 25 year history. Its urban outpatient clinical operation includes hospital and community based primary care clinics which see over 91,000 patient visits a year. GIM faculty (non-hospitalist and hospitalist) perform the majority of inpatient attending on the Boston Medical Center inpatient service. Residency programs, both traditional and Primary Care, are lead by GIM faculty. Direct external funding to GIM principal investigators tops \$14 million annually.

AREAS OF RESEARCH FOCUS

- Addiction Medicine • Breast Health Care •
- Career Advancement for Women and Minorities •
- Cancer Prevention and Screening •
- Disparities in Health Care • Interpersonal Violence •
- Health Literacy, Bioethics •
- Health Services Methodology •
- HIV Prevention - Internationally •
- Homeless Health Care •
- Hypertension Therapy Adherence •
- Medical Informatics • Refugee Health •
- Stroke Prevention • Women's Health •

Section of General Internal Medicine at Boston University Medical Center

Attendees

• Jeffrey Samet, MD - *Section Chief, General Internal Medicine* • David Alford, MD - *Clinical Addiction Medicine* •
• Tracy Battaglia, MD - *Women's Health Group (WHG)* • Jonathan Best, MD - *Clinician Educator* • Teresa Cheng, MD - *WHG* • Michele David, MD - *WHG* •
• Deborah Dreyfus, MD - *GIM Fellow* • Karen Freund, MD - *Chief, WHG* • Wendy Gray, MD - *GIM Fellow* •
• Anuradha Paranjape, PhD - *Health Care Disparities Research Unit (HCDRU)* • Angela Jackson, MD - *Vice Chair for Education* • Theresa Kim, MD - *CARE Unit* •
• Nancy Kresin, PhD - *Director, Health Care Disparities Research Unit (HCDRU)* • Andrea Krouman, MD - *WHG* • Karen Lanes, MD - *HCDRU* •
• Jane Liebschutz, MD - *CARE Unit* • Amy Linley, MD - *GIM Fellow* • Karsten Lunze, MD - *GIM Fellow* •
• Mitchell Medow, MD - *Medical Information Systems Unit (MSU)* • Anandh Natesh, MD - *GIM Fellow* • Michael Pascho-Orlow, MD - *Health Literacy Research* •
• Nila Radhakrishnan, MD - *Vice Chair, Inpatient Medicine* • Adam Rose, MD - *Health Services Research, VA* • Richard Saiz, MD - *Director, CARE Unit* •
• Christopher Shanahan, MD - *Director, Community Medicine Unit (CMU)* • Judith Tsai, MD - *CARE Unit* • Alexander Walley, MD - *CARE Unit* •

Recipients of the Second Annual John Noble Travelling Scholarship to the SGIM National Meeting
• Molly Evans, MD - *Resident* • Rebecca Grochow, MD - *Resident* • Aaron Hyatt, MD - *Resident* • Nicole LaRue, MD - *Resident* •
• Suro Lin, MD - *Chief Resident* • Maria Lopez, MD - *Resident* • Lyndonna Marrast, MD - *Resident* •
• Rajesh Patel - *Medical Student* • Leah Zaltman, MD - *Resident* •

SGIM National Meeting

GIM Attendees (n=37)

Faculty:

- Daniel Alford
- Teresa Cheng
- Amresh Hanchate
- Nancy Kressin
- Jane Liebschutz
- Nila Radhakrishnan
- Adam Rose
- Christopher Shanahan

- Tracy Battaglia
- Michele David
- Angela Jackson
- Andrea Kronman
- Mitchell Medow
- Richard Saitz

- Jonathan Berz
- Karen Freund
- Theresa Kim
- Karen Lasser
- Michael Paasche-Orlow
- Judith Tsui
- Alexander Walley
- Jeffrey Samet

Fellows:

- Deborah Dreyfus
- Karsten Lunze

- Wendy Gray
- Azadeh Nasseh

- Amy Linsky

Residents:

- Molly Evans
- Nicole LaRue
- Lyndonna Marrast

- Rebecca Grochow
- Suru Lin
- Rajesh Patel

- Arooj Hyat
 - Maria Lopez
 - Leah Zallman
-

AcademyHealth Annual Research Meeting 2010



SECTION OF GENERAL INTERNAL MEDICINE BOSTON UNIVERSITY SCHOOL OF MEDICINE

Presentation Summary

26th AcademyHealth's Annual Research Meeting

Society of General Internal Medicine

Hynes Veterans Memorial Convention Center,

Boston, Massachusetts

June 26 - June 29, 2010

ABOUT US

Begun in the later 1970's, the Section now has over 100 faculty members and an active General Internal Medicine Fellowship Program with a > 25 year history. Its urban outpatient clinical operation includes hospital and community based primary care clinics which see over 91,000 patient visits a year. GIM faculty (non-hospitalist and hospitalist) perform the majority of inpatient attending on the Boston Medical Center inpatient service. Residency programs, both traditional and Primary Care, lead by GIM faculty. Direct external funding to GIM principal investigators tops \$14 million annually.

AREAS OF RESEARCH FOCUS

- Addiction Medicine • Breast Health Care •
- Career Advancement for Women and Minorities •
 - Cancer Prevention and Screening •
 - Disparities in Health Care •
- Interpersonal Violence • Health Literacy, Bioethics •
 - Health Service Methodology •
 - HIV Prevention- Internationally •
 - Homeless Health Care •
- Hypertension Therapy Adherence •
- Medical Informatics • Refugee Health •
- Stroke Prevention • Women' Health •

Section of General Internal Medicine at Boston University Medical Center

- Jeffrey Samet, MD - *Section Chief, General Internal Medicine* • Karen Freund, MD - *Chief, Women's Health Unit (WHU)* •
- Tracy Battaglia, MD - WHU • Michele David, MD - WHU • Anuresh Hanchate, PhD - *Health Care Research Unit* •
- Nancy Kresin, PhD - *Director, Health Care Disparities Research Unit (HCDRU)* • Andrea Kronman, MD - WHU •
- Karen Lassen, MD - HCDRU • Amy Linsky, MD - *GIM Fellow* • Mary Beth Howard - *RA WHU* • Elaine Hyde •
- Richard Saltz, MD - *Director, CARE Unit* • Alexander Willey, MD - *CARE Unit* • Christina Santana - WHU •
- Leah Zallman, MD - *Resident* • Bonnie Sherman PhD - WHU • Alok Kapoor MD - *IMPAC CARE Unit* •
- Griffith Bell - *RA WHU* • Kristine Beaver - *RA WHU* •

BMC Gala 2010

GIM and CMU – Community Donor Sponsors

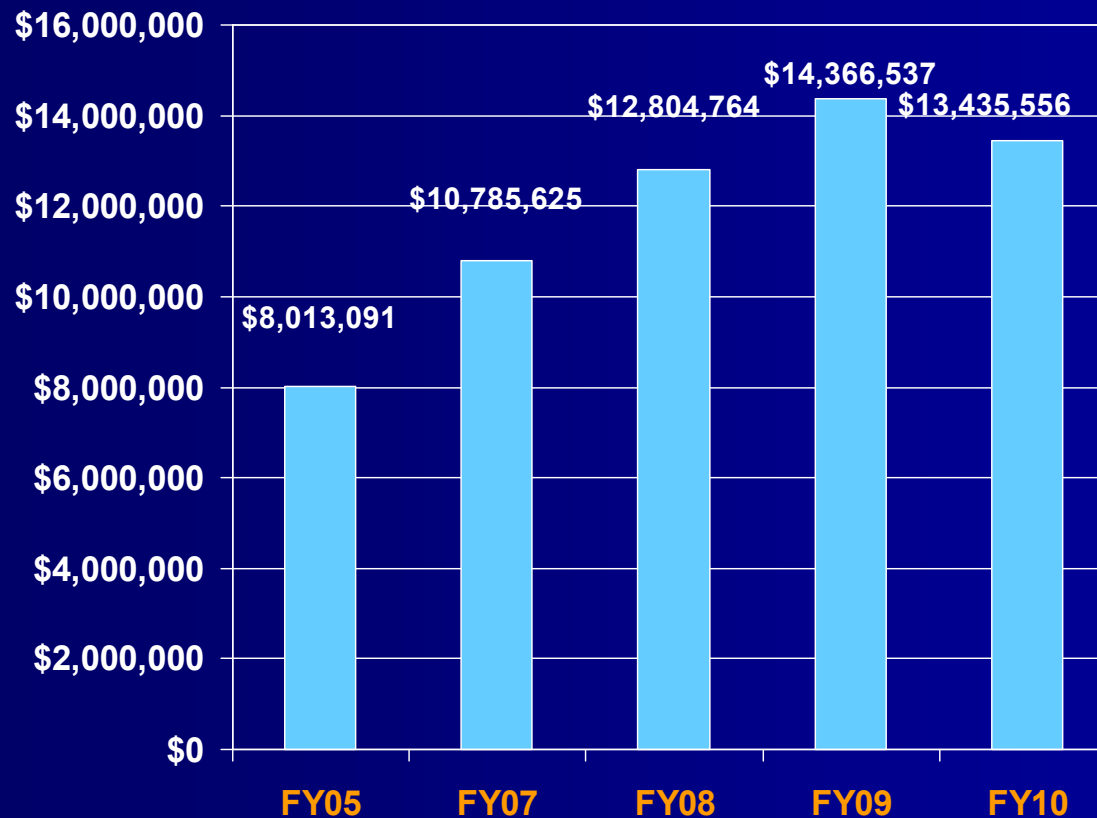


Saturday, May 8th at the Seaport World Trade Center

Accomplishments

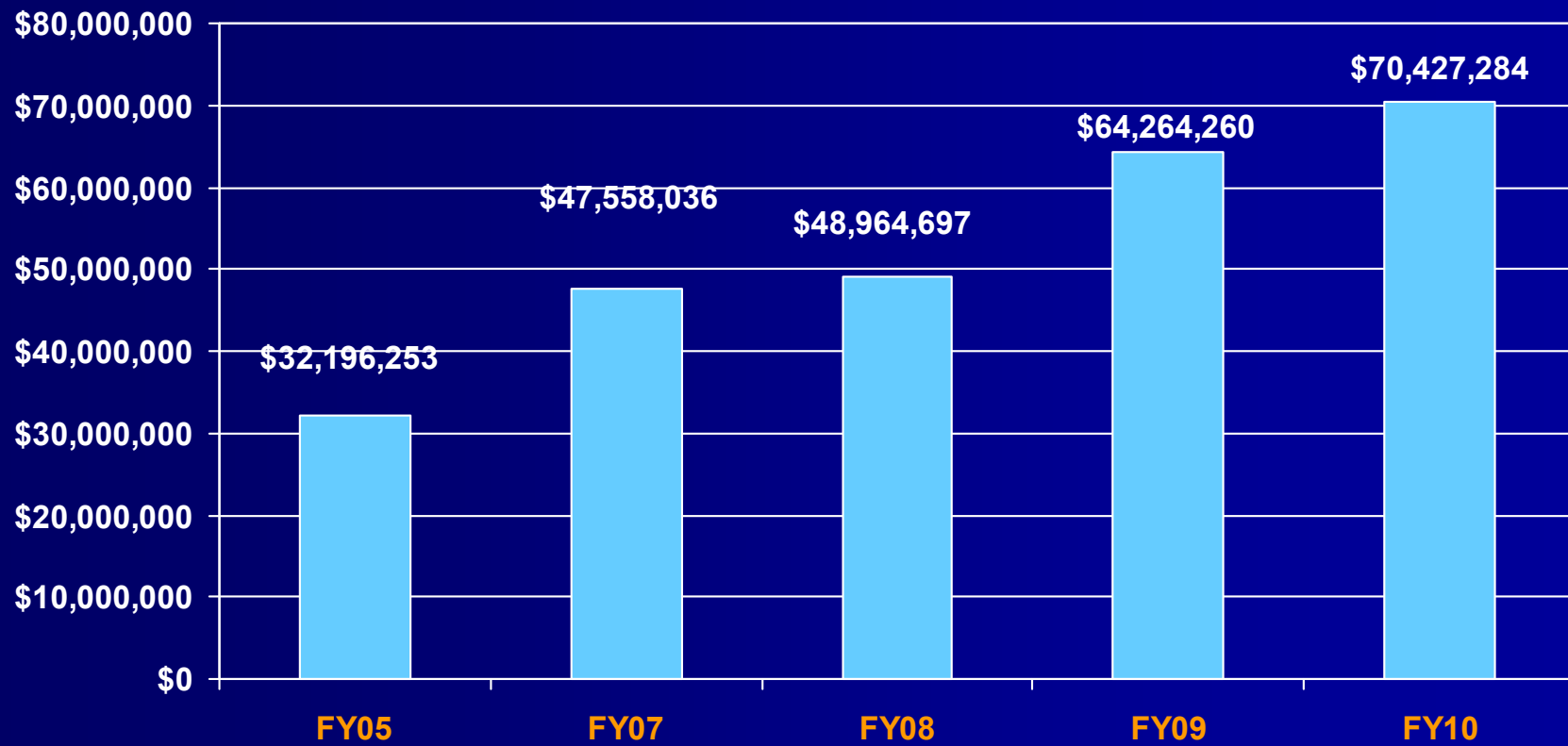


Current Annual Direct Research and Training Grant Awards



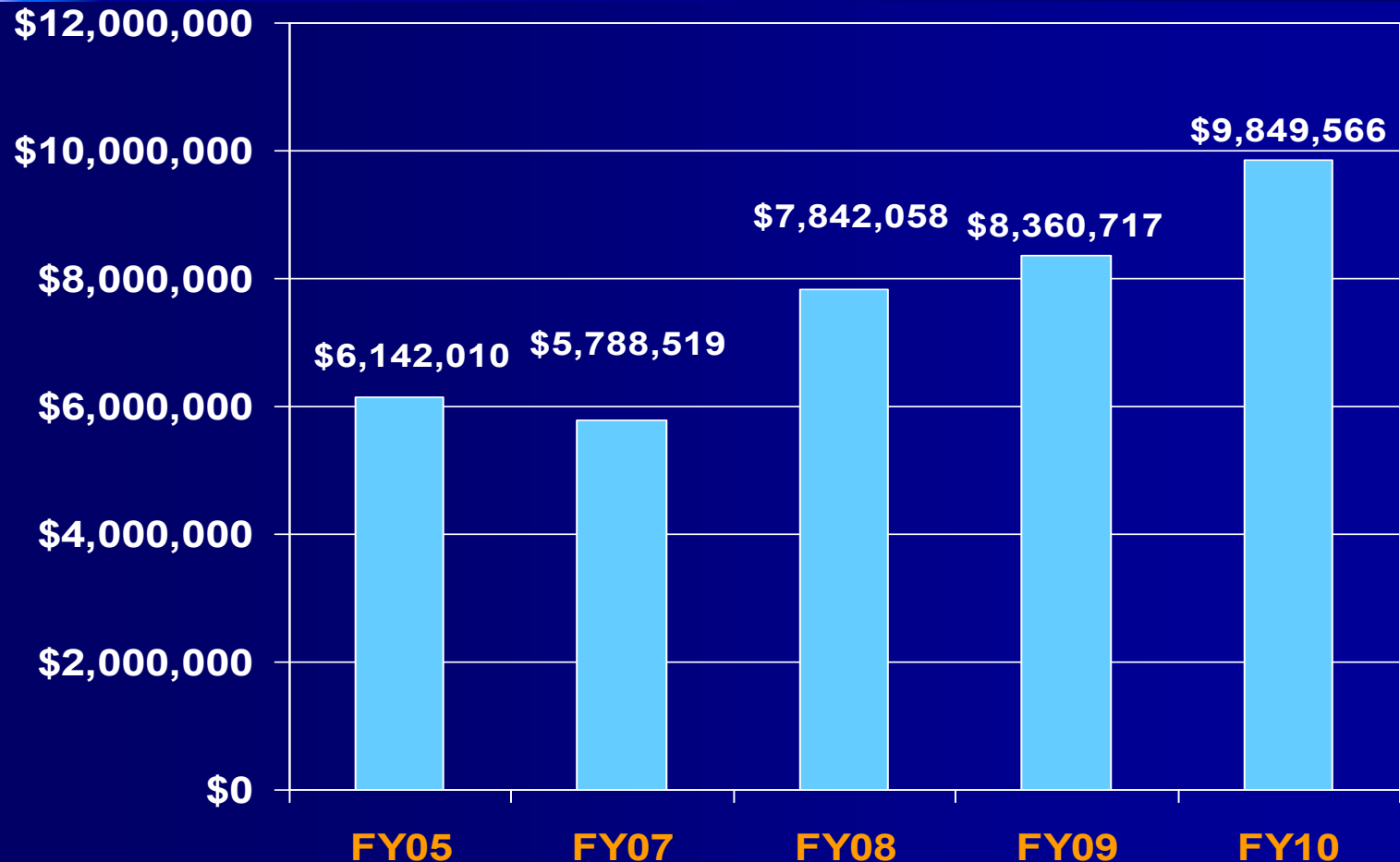
FY10 Total Direct & Indirect Research & Training Grant Awards: \$17,309,320

Total GIM Research Grant Awards*



* Includes Direct and Indirect Costs

Total Fellowship & Training Grant Awards*



* Includes Direct and Indirect Costs

GIM Clin Educator Grant Support

Breast Health Initiative, AVON

- Elizabeth Dupuis
- Andrea Kronman
- Renee McKinney

Patient Navigation, DPH

- Chava Chapman
- Andrea Kronman
- Eunice MacAllister

FAST PATH, SAMHSA

- Sandra Gordon

MASBIRT, DPH

- Christopher Shanahan
 - Daniel Alford
 - Theresa Kim
-

GIM Clin Educator Grant Support

PC Training Program, HRSA

- Craig Noronha
- Catherine Rich
- Angela Jackson

Boston Center for Refugee Health & Human Rights, Mass DPH

- Sondra Crosby

Framingham Heart Study, NIH

- Bernie Kreger
-

New Research Grants

GIM PIs

- **Chapman, C:** Komen, Reach Out to Increase Hope; \$39,827; 4/10-3/11
 - **David:** Leadership in Advocacy Block, Instit of Med; \$75,000; 8/09-9/11
 - **Dedier:** Robert Wood Johnson Foundation; \$258,483; 9/09-11/11
 - **Freund:**
 - NCMHD, Health Insurance Reform & Cancer Disparities; \$939,585; 9/09-6/11
 - NIGMS, Nat Faculty Survey; \$1,277,764; 9/09-8/13
 - Komen, Patient Navigation; \$405,000; 5/10-4/13
-

New Research Grants

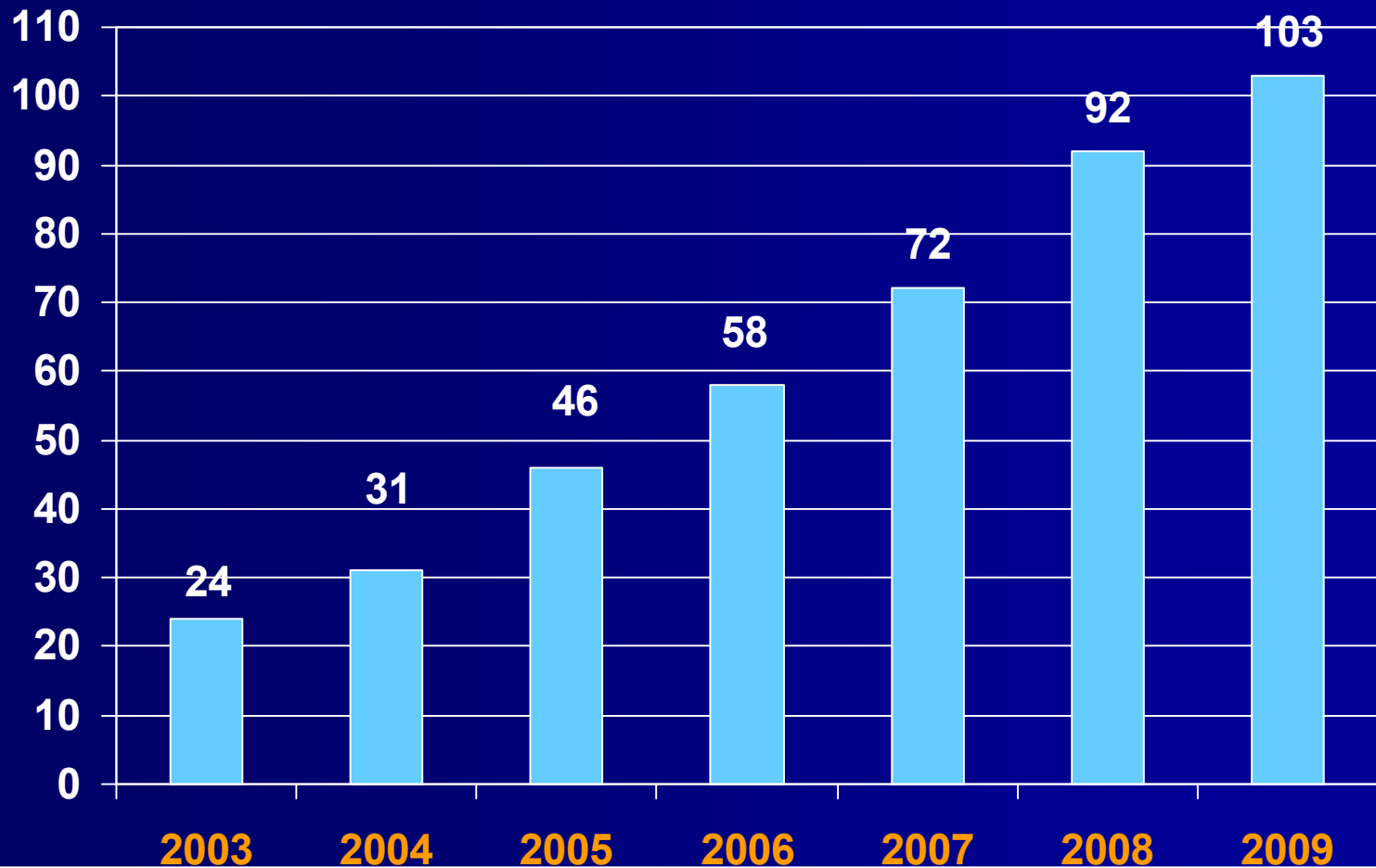
GIM PIs

- **Hylek:** NHLBI, Bridge Trial; \$297,046; 11/09-10/13
 - **Kapoor:** NCRR, CTSA; \$114,967; 1/10-4/10
 - **Kressin:** NHLBI, Health Disparities Monitoring System; \$3,559,943; 9/09-7/11
 - **Kronman:** ACS, Patient Navigation; \$300,000; 7/09-6/12
 - **Lasser:** ACS, Barriers to Colorectal Cancer; \$244,008; 10/09-12/10
 - **Naimi:** NIAAA, Youth Drinking; \$1,978,063; 5/10-8/13
 - **Tsui:** NIDA, SSRI Treatment; \$32,480; 7/09-5/10
 - **Walley:** CDC, Overdose Prevention; \$350,043; 9/09-9/11
-

Career Development Awards

- Tsui
 - NIDA, HCV and Pain in Substance Users;
\$655,739; 6/10-5/14

2009 GIM Publications



GIM Faculty and Fellow Authors in 2009 (n=40)

- Alford
 - Ash
 - Battaglia
 - Berlowitz
 - Berz
 - Carr
 - Chen
 - Cheng Debbie
 - Cheng Teresa
 - Dedier
 - Freund
 - Gerber
 - Gifford
 - Greenwald
 - Hanchate
 - Hermos
 - Hylek
 - Jackson
 - Kapoor
 - Kim
 - Kressin
 - Kronman
 - Lasser
 - Liebschutz
 - Lunze
 - Meisel
 - Murabito
 - Nader
 - Naimi
 - Orlander
 - Paasche-Orlow
 - Raj
 - Rose
 - Saitz
 - Samet
 - Selim Bernardo
 - Smith Peter
 - Stillman
 - Tsui
 - Walley
-

Invited Lectureships 2009-2010

- Michele David, MD, MBA, MPH
 - 2010 William A. Hinton Award Lecture, Massachusetts Health & Human Services
 - Jeffrey Samet, MD, MA, MPH
 - Samuel. S. Riven General Internal Medicine & Public Health Visiting Lectureship, Vanderbilt University School of Medicine
-

Awards

- **Daniel Chen, MD, MSc**
 - Clinical Sciences Educator of the Year, BUSM
 - **Peter Davidson, MD**
 - 2009 Robert A. Witzburg Ambulatory Teaching Award
 - **Adam Rose, MD**
 - 2009 Pier M. Mannucci Young Investigator Award
 - **Alexander Walley, MD, MSc**
 - 2010 New England Region Society of General Internal Medicine Clinician Investigator Award
-

Awards

- **James O'Connell, MD**
 - J.H. Kanter Prize Laureate, Enhancing Health Care Delivery
 - **Nancy Kressin, PhD**
 - 2010 Giddon Award for Distinguished Research in the Behavioral Sciences
 - **Catherine Rich, MD**
 - 2010 Community-Based Faculty Teacher Award
 - **Karen Lasser, MD, MPH**
 - Best Oral Presentation at SGIM's Distinguished Professor Program in Cancer Research
-

Appointments & Promotions

- **Professor:**
 - Warren Hershman, MD
 - Nancy Kressin, PhD
 - Jay Orlander, MD
 - William Barron, MD
 - **Associate Professor:**
 - Karen Lasser, MD, MPH
 - Timothy Naimi, MD, MPH
 - **Assistant Professor:**
 - Jonathan Berz, MD, MSc
 - Teresa Cheng, MD, MSc
 - Melissa DiPetrillo, MD
 - Ellen Meltzer, MD
 - Daniel Newman, MD
 - Charlene Weigel, MD
 - **Clinical Assistant Professor:**
 - Hernan Lopez-Morra, MD
 - **Instructor:**
 - Tara Dumont, MD
 - Clare Horkan, MB, BCh
 - Darshan Shah, MD
 - **Clinical Instructor:**
 - Eunice MacAllister, RNC
-

GIM Evans Educators 2009-2010

- Renee McKinney, MD
- Elaine Hylek, MD
- Tom Barber, MD
- Julie Crosson, MD

Welcomed Additions

- Zahin Aziz to Alok Kapoor and Elora
 - Raza to Muhammad Syed and Rabab
 - Nina Ann to Leyda Delgado and Ron
 - Maria to Craig Noronha and Ansu
 - Nandhini to Anjali Grandhige and Hemanth
 - Rory to Clare Horkan and Kenneth
 - Julian Diaz to Peter Smith and Jodi
 - Agnes Ying-Lin to Judy Tsui and Peter
-

Nuptials

- Catherine Rich to Andrew
 - Carrie Daniel to Jeffrey
 - Nila Radhakrishnan to Hari
 - Leila Obeid to Charles
-

Challenges

- Transformation of GIM PC to meet criteria of a PCMH
 - Measurement of quality of GIM care on the inpatient medical services
 - Grant support of research and training programs
 - Further development of academic and clinical character of the Hospital Medicine Unit
 - Balance of clinical and educational expectations
-

Section of General Internal Medicine

Most Valuable Player Award



Craig Noronha , MD

We remain a Formidable Crew

*Congratulations on all Our Successes
Good luck with all Our Challenges*

Thanks for all the hard work and
perseverance!

Thanks to
Debra Paarz and Sarah Brunt
for all the persistence and talent
in the preparation of this
State of the Section
