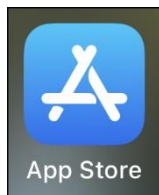


medhub

MedHub Mobile App – iOS Download and Login (SSO)

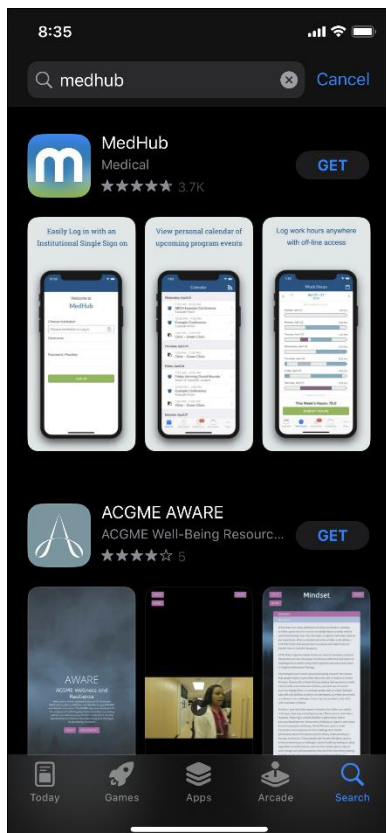
The following are instructions for downloading the MedHub mobile app for iOS and how to log into the mobile app using your institution's Single-Sign-On (SSO) method.

Navigate to and tap the iOS **App Store** icon on your home screen to open the App Store.

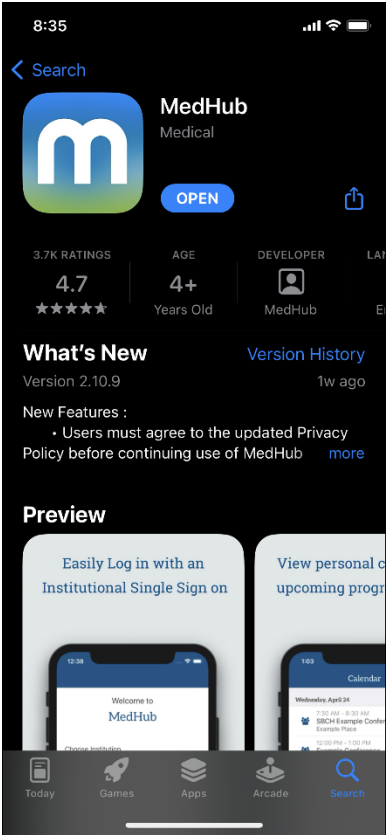


Tap the Search icon at the bottom of the screen and search for **MedHub** in the search bar.

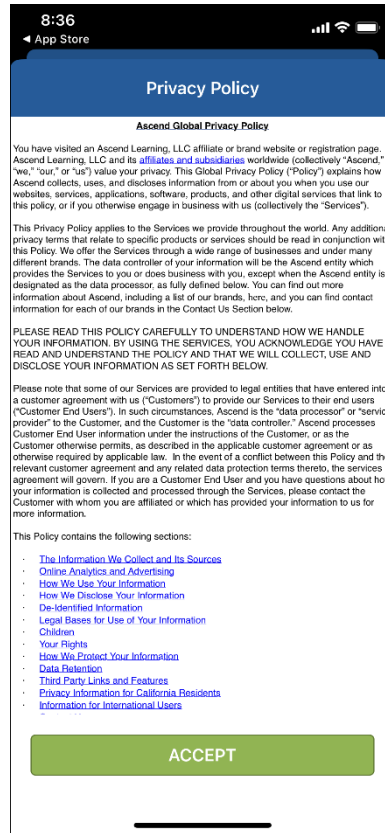
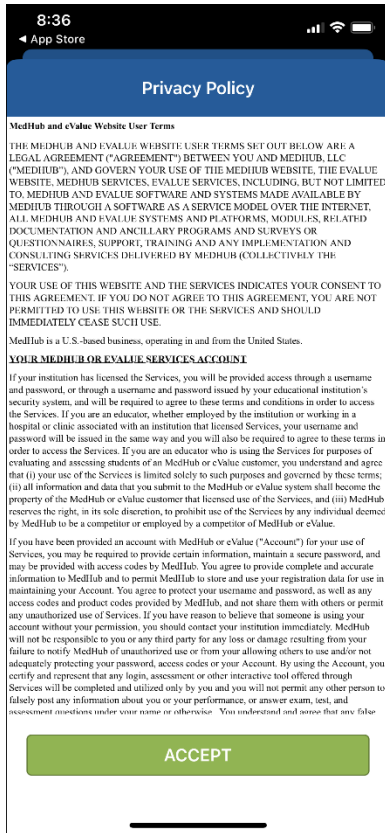
Click on the MedHub mobile application entry, tap **Get**, and authorize the download of the MedHub iOS app.



Once the app is downloaded, either click **Open** from within the App Store or navigate to the MedHub mobile app on your home screen and tap it to open.



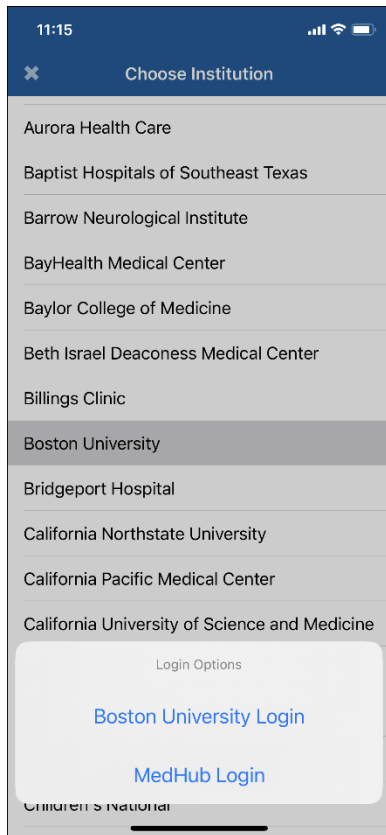
When the MedHub mobile app launches, you will be asked to accept the MedHub privacy policy. The policy must be accepted to proceed to the login screen. Tap **Accept** for the MedHub and Ascend Global privacy policies to continue. You will not have to perform this step if you have already accepted the privacy policy.



The login screen is displayed once the privacy policy has been accepted.

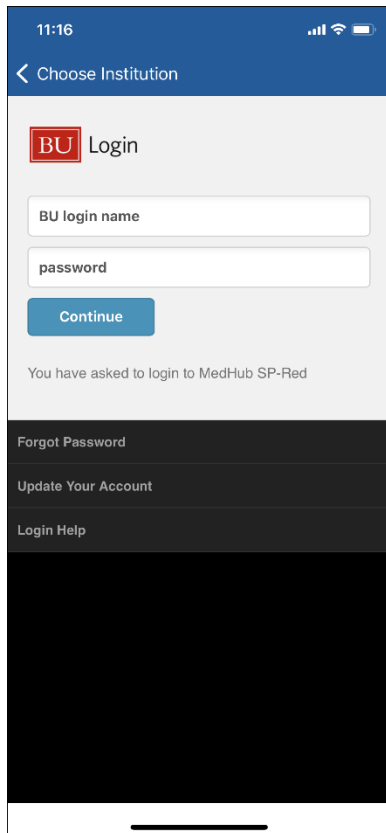
Tap the **Choose Institution** menu and select your institution from the available options.

If your institution uses the Single-Sign-On (SSO) method for MedHub, you will see a **Login Options** menu with both your institution's SSO login and the standard MedHub login listed once you have selected your institution.



Tap on your institution's SSO login option (e.g., Boston University Login) and use your institutional SSO credentials. This SSO login uses the same credentials as your login for the MedHub desktop website.

For your institutional SSO login, enter your institutional username and password and tap **Continue** to access your MedHub mobile account.



When first logging into the MedHub mobile app, you will be asked to allow push notifications. Tap **OK** to allow or **Don't Allow** to turn off push notifications. Notification parameters can be changed in your mobile settings.

Once a period of seven days (by default) has elapsed, you will be required to re-enter your login credentials. This time period may be different depending on institutional settings.

You are now logged into the MedHub mobile app. Navigate through the Calendar, Work Hours, Evaluations, or Procedures features along the bottom of the screen, or click on the **More...** option to view additional features.

See the MedHub user manual for additional information on using the mobile app and related features.

