

## Updates from the Chair

July, 2010

**Rhoda M. Alani, MD**

*Herbert Mescon Professor and Chair*



Dear Colleagues:

As you will note from this latest addition of our departmental newsletter, July has been a very busy month for BU Dermatology with the promotion of our colleague, Lynne Goldberg, to Professor of Dermatology, the addition of several new faculty, and the publication of a large number of significant research articles by members of the department. This month we also initiate a new section in our newsletter dedicated to our departmental staff members. I hope you enjoy getting to know these individuals better. We have also included information on our upcoming Boston University Dermatology Alumni Association reception to take place on September 21<sup>st</sup>. Please save the date and tell your fellow alumni about this exciting opportunity to catch up with old friends and learn about what's new at BU Dermatology. A detailed invitation will be sent to all alumni in the coming weeks. Finally, I am hoping you will also save the date for an upcoming Celebration of Life Ceremony to honor the memory of our dear friend and colleague, Dr. Marie-France Demierre. This celebration will coincide with the First Annual Howard Koh Visiting Professor Lectureship and I am hoping that many of you will be able to attend both of these very special events.

The Children's Melanoma Prevention Foundation is hosting a benefit concert dedicated to Dr. Marie-France Demierre on Saturday, September 25. Please see the full announcement at the end of this newsletter.

### Dermatopathology Section Update

**Deon Wolpowitz, MD, PhD & Jag Bhawan, MD**

**New diagnostic tool for patient care and research**

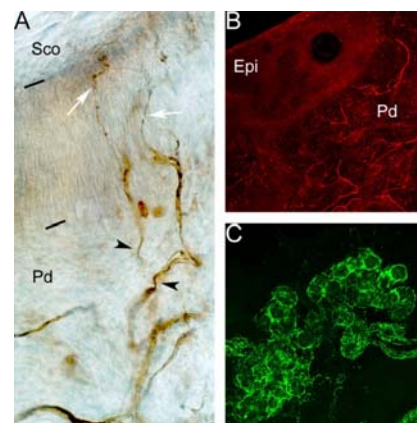
Cutaneous innervation plays a pathophysiologic role in disease states of the skin as well as being targeted in diseases involving other organ systems. In this regard, Skin Path Lab now offers the ability to generate intraepidermal nerve fiber counts using conventional two-dimensional analysis in vertically-oriented skin sections (see Figure 1, A), such as is currently used in the detection of small fiber neuropathies. Moreover, we have developed a new technique to visualize nerve fibers in horizontal sections, affording three-dimensional assessment of nerve fiber quantity and distribution in skin biopsies. Depending on the antibody used, we can visualize all nerves in the skin (PGP9.5, see Figure 1, B), as well as specific subsets, including p75 NGFRc-positive nerves in the dermis, autonomic (tyrosine hydroxylase—see Figure 1,C; vasoactive intestinal peptide) and sensory nerves (CGRP and substance P receptor). This newer technique preserves the architecture of the nerves in relation to the surrounding epidermal and dermal structures including at the dermal-epidermal junction, overcomes sampling bias inherent to the traditional 2D method that can lead to false negative or positive test results, and will be used to understand and diagnose non-skin and skin diseases.

**Figures. (A) Two dimensional intra-epidermal nerve fiber staining using PGP9.5 antibody , 400x.**

Black bars delineate the epidermis (Epi) from the overlying stratum corneum (Sco) and underlying papillary dermis (Pd).

Slender intraepidermal

nerve branches (white arrows) can be seen arising from the immediately subjacent subepidermal nerve plexus (black arrowheads). **(B,C) Three dimensional imaging, in a 200 micron thick transverse skin section.** (B) Detection of intraepidermal and papillary dermal nerve fibers using PGP9.5 antibody, 100x. (C) Autonomic adrenergic innervation of sweat glands (tyrosine hydroxylase, green), 200x.

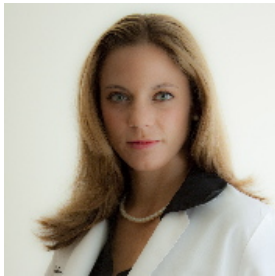


## Incoming Department Members



*Ron Yaar, M.D., Ph.D.*

Dr. Yaar graduated from Boston University School of Medicine with a combined M.D., Ph.D. degree in Biochemistry in 2005. He subsequently completed a residency in Anatomic Pathology at Emory University in 2008 earning the Award for Excellence in Anatomic Pathology. Dr. Yaar is a recipient of the 2008 Stowell-Orbison award from the United States and Canadian Academy of Pathology for work on determining prognostic factors in sentinel lymph node biopsies for melanoma. In 2010, Dr. Yaar completed a two-year fellowship in Dermatopathology at Boston Medical Center under the auspices of Dr. Jag Bhawan and will be joining the department as a dermatopathologist. He is also currently responsible for dermatopathology training for residents and international students.



*Emmy Graber, M.D.*

Dr. Graber received her BS in Biology at The Pennsylvania State University where she also completed her medical training and graduated with membership in Alpha Omega Alpha Medical Honor Society. She subsequently pursued an internship in Internal Medicine and Dermatology residency training at The Pennsylvania State University/Milton S. Hershey Medical Center. Dr. Graber went on to fellowship training in Laser and Cosmetic Surgery at SkinCare Physicians of Chestnut Hill (2007-2008) and has been practicing dermatology with that group since 2008. Dr. Graber is the recipient of an American Society of Dermatologic Surgery Preceptorship Award and an American Acne and Rosacea Society Mentorship Award. She has vast experience in clinical trials for acne/rosacea and cosmetic dermatology and has published and lectured extensively in both of these areas. She has a particular interest in teaching and will take on a leadership role as Associate Program Director for our residency training program in dermatology. Dr. Graber has academic interests in both acne and cosmetic dermatology research. She will be the Director of our Boston University

Cosmetic and Laser Center on Commonwealth Avenue while Dr. Claire Mansur will be Director of our Boston University Dermatology Associates practice at this same location. Dr. Graber will also pursue her academic interest in acne/rosacea and cosmetic dermatology at our DOB practice site and will be seeing patients at the Whittier Street Community Health Center.



*Yuval Bibi, M.D., Ph.D.*

Dr. Yuval Bibi received his MD and PhD in neuroscience and metal biology at Ben Gurion University of The Negev. Subsequently, he pursued post-doctoral training, working with Dr. Elliot Androphy on human papillomavirus innate immunology and carcinogenesis at The University of Massachusetts Medical School in Worcester. He completed his clinical training at the combined Boston University - Tufts University Dermatology Residency Program. Dr. Bibi recently joined The Department of Dermatology at Boston University as a clinician-investigator and is the recipient of Department of Dermatology Research Scholar Award. He will assume leadership roles as the Director of Dermatology at South Boston Community Health Center and as a member of the Melanocytic Biology Research Center. Dr. Bibi is interested in a broad gamut of subjects including the effects of innate immunity on tissue homeostasis, melanogenesis, metal biology and human interactions in the clinical setting. Clinically, Dr. Bibi is intrigued by general dermatology, with an emphasis on mucosal and genital disease.



*Kasia Szyfelbein Masterpol, M.D.*

Dr. Szyfelbein Masterpol earned her BA from the College of the Holy Cross *cum laude*, and subsequently received her MD from Harvard Medical School in 2006. While at Harvard, she was involved in research in the area of dermatopathology and cutaneous malignant melanoma. Dr. Szyfelbein Masterpol completed her internship in Internal Medicine at Cambridge Hospital before joining our residency program in 2007, where she served as Chief Resident during her third year. Dr. Szyfelbein Masterpol will remain

with our Department as an Instructor of Dermatology at Boston University School of Medicine. She will pursue her teaching interests and has already initiated an agreement with Cambridge Hospital to have their primary care residents rotate through her clinics at the DOB.

### **Departmental Kudos**

It is with great pleasure that I announce the promotion of **Dr. Lynne Goldberg** to Professor of Dermatology at Boston University School of Medicine. As you know, Dr. Goldberg has been a long-standing member of our faculty who has provided numerous outstanding academic contributions to our specialty. She is most widely recognized as an international leader in alopecias and the histopathologic distinctions of these disease entities and is known particularly for her dedication to the outstanding teaching and mentoring of residents and fellows within the department. Please join me in congratulating Dr. Goldberg on achieving this important milestone in her career.

### **Publications**

Pongpudpunth M, **Bhawan J**, Al-Natour SH, **Mahalingam M**. Nestin-Positive Stem Cells in Neurofibromas From Patients With Neurofibromatosis Type 1-Tumorigenic or Incidental? *Am J Dermatopathol*. 2010 May 24. [Epub]

Wajapeyee N, Serra RW, Zhu X, **Mahalingam M**, Green MR. Role for IGFBP7 in senescence induction by BRAF. *Cell*. 2010 May 28;141(5):746-7.

**Mahalingam M**, Hoang MP. D2-40 expression in primary scarring and nonscarring alopecia. *Am J Dermatopathol*. 2010 Jul;32(5):427-31

Decarlo K, Yang S, Emley A, Wajapeyee N, Green M, **Mahalingam M**. Oncogenic BRAF-positive dysplastic nevi and the tumor suppressor IGFBP7--challenging the concept of dysplastic nevi as precursor lesions? *Hum Pathol*. 2010 Jun;41(6):886-94.

**Abbas O, Bhawan J**. Expression of stem cell markers nestin and cytokeratin 15 and 19 in cutaneous malignancies. *J Eur Acad Dermatol Venereol*. 2010 Jul 12. [Epub]

Ronaghy A, **Yaar R, Goldberg LJ, Mahalingam M, Bhawan J**. Perineural involvement: what does it mean? *Am J Dermatopathol*. 2010 Jul;32(5):469-76

Grimes PE, **Bhawan J**, Guevara IL, Colón LE, Johnson LA, Gottschalk RW, Pandya AG. Continuous therapy followed by a maintenance therapy regimen with a triple combination cream for melasma. *J Am Acad Dermatol*. 2010 Jun;62(6):962-7.

**Abbas O, Bhawan J**. Cutaneous plexiform lesions. *J Cutan Pathol*. 2010 Jun;37(6):613-23.

**Goldberg LJ, Lenzy Y**. Nutrition and hair. *Clin Dermatol*. 2010 Jul-Aug;28(4):412-9.

**Abbas O, Chatrath V, Goldberg LJ**. Elastophagocytosis in extragenital lichen sclerosis. *J Cutan Pathol*. 2010 Jun 28. [Epub]

**Abbas O, Wieland CN, Goldberg LJ**. Solitary epidermolytic acanthoma: a clinical and histopathological study. *J Eur Acad Dermatol Venereol*. 2010 Jun 9. [Epub]

**Garg A, Haley HL, Hatem D**. Modern moulage: evaluating the use of 3-dimensional prosthetic mimics in a dermatology teaching program for second-year medical students. *Arch Dermatol*. 2010 Feb;146(2):143-6.

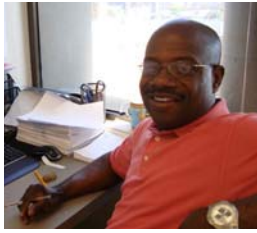
Coleman C, Levine D, Kishore R, Qin G, Thorne T, Lambers E, Sasi S, **Yaar M, Gilchrist BA, Goukassian DA**. Inhibition of melanoma angiogenesis by telomere homolog oligonucleotides. *J Oncology*. Article ID: 928628, 2010.

### **Other Departmental News**

**Amit Garg** has been asked to participate on the Program Committees for the Association of Professors of Dermatology and the Medical Dermatological Society, as well as on the General Dermatology Curriculum Committee for the American Board of Dermatology. Amit will be serving on the editorial board of the *Journal of Clinical and Experimental Dermatology*. He will be part of the Leadership Institute's Mentoring work group at the AAD. Amit will also be joining Tania Philips on the Executive Counsel for NEDS.

## DOB Featured Staff Member

### **Edward Asare**



Eddie was born in Ghana, W Africa and just celebrated a birthday on July 11. He lives in Taunton, MA with his spouse, Dorothy and four children Priscilla, 24, Annabelle, 13 and 9 year old twin boys Brandon and Bryan. Eddie has a BA from University of Science and Technology, Kumasi, Ghana, W Africa. His preferred music is Jazz, Highlife (Ghana) R&B, Country, Reggae and all good music. His favorite food is rice and beans. Eddie started working for the Evans Medical Foundation in 1993, became a BMC employee in 2005 and joined the Dermatology Billing Department in October of 2008. Interesting facts: he is a political junkie, an ardent American football and soccer fan, was once a high school teacher in Nigeria and enjoys taking the stairs and bypassing the elevators to our 9<sup>th</sup> floor office.

## Brockton Featured Staff Member

### **Lisa Brodeur**



She starts work at 8 a.m. with a smile, enthusiasm and energy. However, Lisa's day actually starts at 4 a.m. She rises early to attend a boot camp that is an extreme work-out from 5 to 6 a.m. It is part of her routine to stay in shape for her favorite activity—karate. Lisa has been studying for 11 years and holds a second degree black belt. She teaches cardio-kickboxing and martial arts. She also enjoys hiking, dancing and traveling. Also keeping her busy are her two boys. Jacob graduated high school this year and is off to college in the fall. Jeremy is entering high school this September. Bristol, her bijon frise, has been with the Brodeur's for 11 years and is considered a member of her family. Lisa has been at Boston University Dermatology in Brockton for two years. She has a wide range of medical office experience from working in cardiology and orthopedic practices. She is also a former business owner. She ran Lisa's Day Care for eight years and had 10 children in her group. Currently, she handles referrals, medical record requests, schedules appointments and works at the front desk. Lisa's favorite foods include pizza and Chinese food. She has a strong dislike for dishonesty.

## Comm Ave Featured Staff Member

### **Pamela Interrante**



Pamela Interrante is a practicing Licensed, Registered Electrologist and a Certified Laser Technician as well as a member of the American Society for Laser Medicine and Surgery, Inc. She has been successfully treating clients for over twenty years through electrolysis in Needham, Massachusetts and has 12 years of experience with laser hair removal. In 1998, Pamela was selected to receive comprehensive training on laser hair removal from Thomas E. Rohrer, M.D., then Director of the Boston University Center for Cosmetic & Laser Surgery as well as Boston University's Director of Dermatological Surgery. She has also had the opportunity to be involved in several laser hair removal studies at Boston University. Ms. Interrante was one of the first laser technicians to have significant experience with the Candela Nd:YAG laser for darker skin type patients and has been using this laser for over three years, providing invaluable information for the makers of the laser regarding different settings and results.

## 609 Albany Street Featured Staff Member

### **Swan Adikari**



Systems Operations Manager in the Dept. of Dermatology and Skin Pathology Laboratory. Swan is a Sri Lankan American who migrated to US. For most of his technical career as a Computer Systems Engineer he has been working with Toshiba Laptop computers in Sri Lanka and Dubai/Abu-Dhabi. He also trained in Singapore. Apart from his Information Technology career, Swan enjoys social services and he is also a board of directors in New England Lanka Academy. His hobbies include hiking, nature, music, social services and aikido. Swan plays the guitar and Sri Lankan traditional drums and will be performing in Clear Water and Orlando, FL this coming weekend. He enjoys traveling and has traveled to Sri Lanka, USA, Canada, UAE, Singapore, Turkey, India, Mexico, Bermuda and Thailand. Swan is married and has a 12 year old son. Lately he was greatly influenced by Buddhist Meditations. "I take every day as a gift. Breathing in I know I am alive. Breathing out, I feel the joy of being alive."

*"Be the change you wish to see in the world."*

-Gandhi



I hope you enjoyed this latest edition of Dermatology Updates.

Please keep me posted on your news and feel free to send your suggestions for future topics and features to [budermnewsletter@hotmail.com](mailto:budermnewsletter@hotmail.com).

Don't forget to also visit us on Facebook:

<http://www.facebook.com/pages/Boston-MA/Boston-University-and-Boston-Medical-Center-Dermatology/243883552117>

Best regards,



Rhoda

## CALENDAR OF EVENTS

### AUGUST/SEPTEMBER 2010

#### GRAND ROUNDS

PLACE: DOCTORS OFFICE BUILDING, 9<sup>TH</sup> FLOOR

DATE/TIME: WEDNESDAY, AUGUST 4, 8:30 – 11:45

LECTURE: SIGNALING AND NETWORKS IN MELANOMA BY DR. DAVID FISHER

#### FACULTY MEETING

PLACE: 609 ALBANY STREET, 4<sup>TH</sup> FLOOR CONFERENCE ROOM

DATE/TIME: WEDNESDAY, AUGUST 4, 12:00 – 1:00 PM

#### NICHA RUNGSIMANOND THESIS DEFENSE

PLACE: PETER POCHI CONFERENCE ROOM – 2<sup>ND</sup> FLOOR 609

ALBANY STREET

DATE/TIME: THURSDAY, AUGUST 5, 11:00 AM

LECTURE: ROLE OF BMP-SMAD1 PATHWAY IN MELANOMA PROGRESSION

#### GRAND ROUNDS

PLACE: DOCTORS OFFICE BUILDING, 9<sup>TH</sup> FLOOR

DATE/TIME: WEDNESDAY, SEPTEMBER 1, 8:30-11:45 AM

LECTURE: Title TBA By Dr. Maria Trojanowska

#### FACULTY MEETING

PLACE: 609 ALBANY STREET, 4<sup>TH</sup> FLOOR CONFERENCE ROOM

DATE/TIME: WEDNESDAY, SEPTEMBER 1, 12:00 – 1:00 PM



PLEASE JOIN THE BOSTON UNIVERSITY DEPARTMENT  
OF DERMATOLOGY FOR A MEET AND GREET

*Inaugural Reception*  
*Boston University Dermatology Alumni Association*

TUESDAY, SEPTEMBER 21, 2010

6:30 - 8:30 IN THE EVENING

THE TERRACE AT BU SCHOOL OF MANAGEMENT\*  
595 COMMONWEALTH AVENUE  
BOSTON, MA

JOIN YOUR COLLEAGUES AS WE CATCH UP WITH OLD  
FRIENDS, REMINISCE ABOUT THE PAST, AND LEARN  
ABOUT WHAT'S NEW AT BU

KINDLY RSVP BY SEPTEMBER 10, 2010  
617-638-5500 OR [DERM@BU.EDU](mailto:DERM@BU.EDU)

\*PARKING IS AVAILABLE IN THE GARAGE BENEATH THE SCHOOL OF  
MANAGEMENT. PLEASE BE SURE TO USE THE EAST ELEVATORS IN  
ORDER TO ACCESS THE TERRACE

A background of several large, light pink flowers with darker pink centers, set against a dark green background. The flowers are in various stages of bloom, with some fully open and others as buds.

## *Save the Date*

A Celebration of the Life of  
Dr. Marie-France Demierre

Monday, November 1, 2010

4:00 PM

Boston Medical Center

Please join us in remembering our dear colleague and friend. There will be speakers, music, pictures, and other tributes to the things she loved, as well as a lecture by Dr. Howard Koh, Assistant Secretary for Health in the US Department of Health and Human Services.

Full invitation to follow  
at a later date

# Special Benefit Concert

*dedicated to Dr. Marie-France Demierre, M.D.*

Saturday, September 25th, 6:30 pm  
Roy Campus Center at Derby Academy  
Hingham, Massachusetts



The Children's Melanoma Prevention Foundation invites you to a special performance by the Neponset Valley Philharmonic Orchestra.

The evening will include cocktails, hors d'oeuvres and a silent auction, followed by the concert and dessert.

All proceeds will support the Children's Melanoma Prevention Foundation's SunAWARE Program and the Demierre Family Fund.

To reserve tickets, visit [www.melanomaprevention.org](http://www.melanomaprevention.org) or call 781-875-1SPF (1773)



Neponset Valley  
Philharmonic Orchestra

