



Clinical Addiction Research and Education

24th Annual Immersion Trainings in Addiction Medicine

funded by the National Institute on Drug Abuse (NIDA R25DA013582)



Chobanian & Avedisian
School of Medicine



History

- Clinical Addiction Research and Education (CARE) Program began in **2002** with funding by the National Institute on Drug Abuse (NIDA)
- **Chief Residents (CR) +/- Faculty Mentors (FM)**
 - **CRIT:** 24 years (2002-2025): **533 CRs, 165 FMs** from **249** programs (**38** states)
- **Junior Faculty (JF) → CARE Faculty Scholars (CFS)**
 - **JFIT:** 6 years (2017-2022): **43 faculty** from **35** programs (**21** states)
 - **CFS:** 3 years (2023-2025): **31 faculty** from **25** programs (**18** states)
- **Fellows** (ID, GI, Pain, Adolescent, GIM, Addiction Medicine, Nephrology)
 - **FIT:** 14 years (2012-2025): **104** fellows from **60** institutions (**25** states)
- **International Participants:** Argentina, Brazil, Bulgaria, Canada, Georgia, Iraq, Myanmar/Burma, Russia, Spain, Switzerland, Tanzania, Vietnam

2025 Attendees



CRIT: 21 *incoming* Chief Residents (“CRITers”)

- 15 Internal Medicine, 3 Family Medicine, 1 Pediatrics, 2 Family Medicine & Psychiatry
- 19 programs from 13 states



6 Faculty Mentors (“Mentors”) attending with their CR



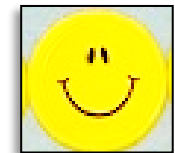
CFS: 10 Faculty Scholars (“Scholars”)

- 9 Internal Medicine, 1 Family Medicine
- 9 institutions from 7 states



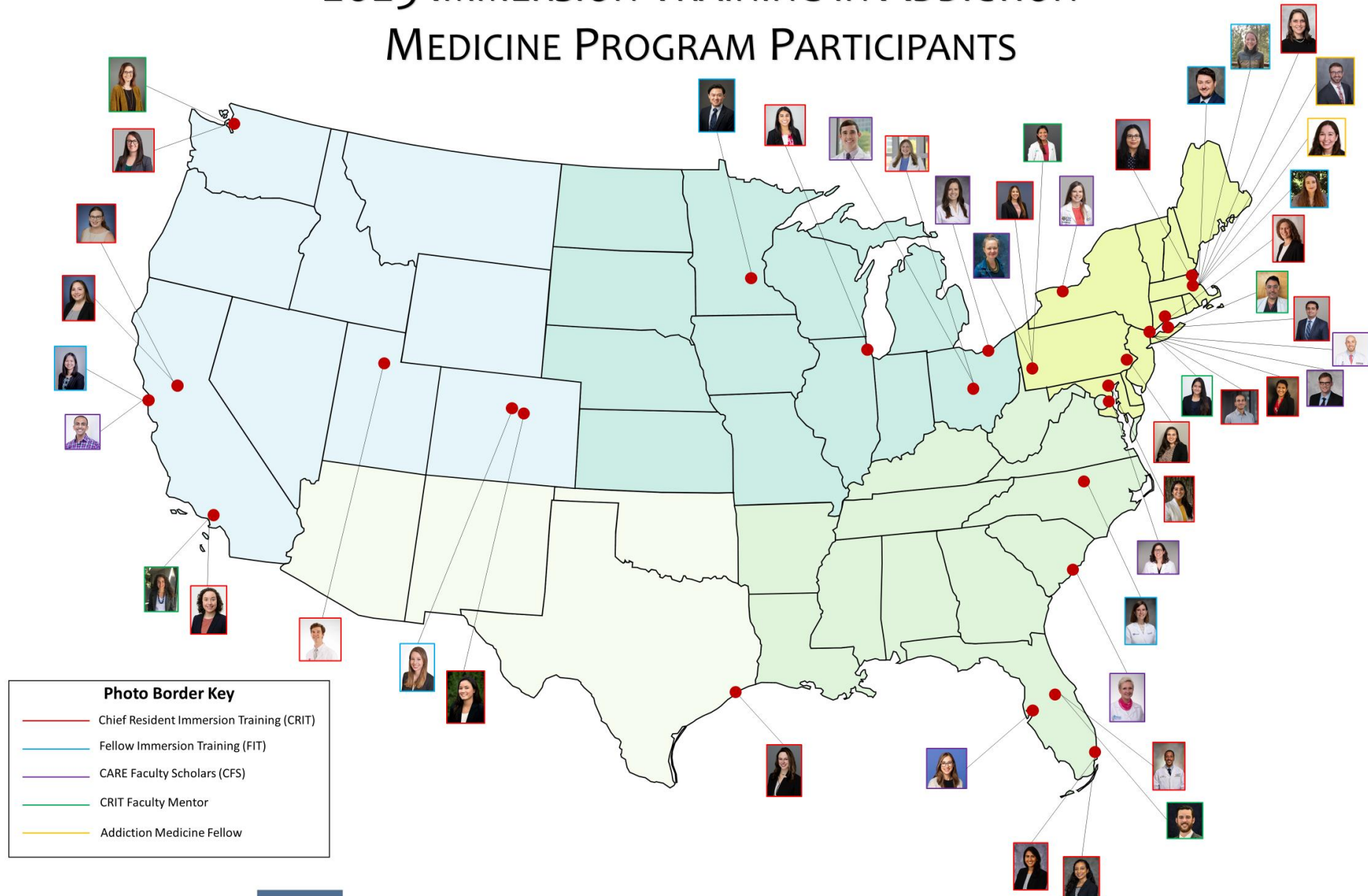
FIT: 7 Fellows (“FITers”)

- 1 Infectious Disease, 1 Integrative Medicine, 1 Adolescent Medicine, 1 Palliative Care, 1 Emergency Medicine, 1 Transplant Hepatology, 1 Epidemiology
- 5 institutions from 5 states



Special Attendees: 2 BMC Addiction Medicine Fellows

2025 IMMERSION TRAINING IN ADDICTION MEDICINE PROGRAM PARTICIPANTS



Examples of your proposed educational projects...

- Implement educational seminars on inpatient methadone initiation in the era of fentanyl use
- Expand medication treatment training and integrate addiction-focused education into inpatient rotations
- Introduce an interdisciplinary case-based workshop on the management of OUD in collaboration with an expert pharmacist
- Develop a longitudinal curriculum equipping residents to screen for SUDs and to practice engaging patients in harm reduction and treatment
- Develop an addiction medicine curriculum that can be implemented directly into a resident continuity clinic
- Create a curriculum for primary care track residents in treatment for substance use, to include medication treatment with buprenorphine

Examples of your proposed research project...

- Perform a multivariable regression analysis to assess the odds of ED and prehospital visits for opioid overdose among persons experiencing homelessness who are in stable shelter compared to propensity-score matched controls
- Elicit the perspectives of interdisciplinary team members on barriers and facilitators to providing palliative care for oncology patients with SUD
- Implement a multi-method study to gain a culturally inclusive understanding of how peers and parents can be protective against substance use, paving the way for parent- and peer-focused clinical interventions
- Conduct a national survey distributed to adult liver transplant medical directors that compiles the institutional protocols for relapse prevention strategies pre- and post-transplant

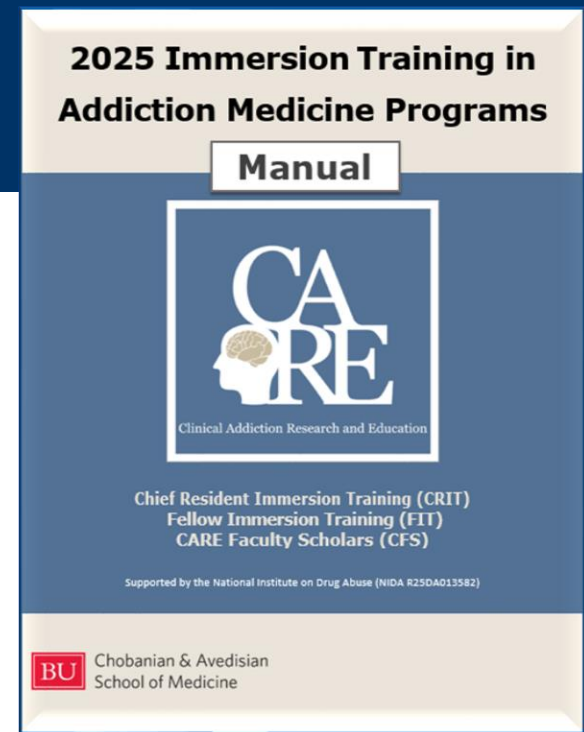
Program Highlights

- **Large group** sessions (core content, ***NEW***: lightning rounds)
- **Small group** sessions
 - **CRIT**: skills practice sessions, **Substance Use Teaching Project (SUTP)** mentoring, CRIT-specific content
 - **CFS**: skills practice sessions, **Addiction Medicine Enhancement Project (AMEP)** mentoring and presentations, CFS-specific content
 - **FIT**: **Project Development Plan/Analytic Plan (PDP/AP)** mentoring and workshop presentations, panels, FIT-specific content
- **Mutual help meetings**
- **Naloxone Training & Harm Reduction Session**
- **Discussions with guests with living experience**

Manual and Schedule

Manual

- Schedule
- Didactic session cover pages, references
- **All groupings (“tracks”):**
 - **CRIT** – SUTP mentoring groups | small group sessions
 - **CFS** – Small group sessions
 - **FIT** – Project Development Plan and Analytic Plan workshop, 1:1 groups
- Faculty bios and email addresses
- Participant information and email addresses
- *and much, much more....*



Legend	
Dark Blue	Chief Resident (CR)
Blue	Faculty Mentor (FM)
Green	Fellow (FIT) attendees
Orange	CARE Faculty Scholars (CFS) attendees

			➤ 5:00 – 6:45 PM: CARE Faculty Scholars Revelations – <i>Alford, Cruz, Demers Middleton</i>
			CR and FM Breakout <i>Auditorium</i>
			➤ 5:45 – 6:15 PM: Introduction to Substance Use Teaching Project (SUTP) – <i>Rozansky</i>
			➤ 6:15 – 6:45 PM: Introduction to Chief Residency, Adult Learning, and “How Do I Teach This?” – <i>Jackson</i>
			FIT Breakout <i>Rowley</i>
			➤ 5:45 – 6:15 PM: Fellow Revelations – <i>Walley, Assoumou, Wilson, Samet</i>
			➤ 6:15 – 6:45 PM: Designing Clinical Addiction Research – <i>Walley, Assoumou, Wilson, Samet</i>

Additional thoughts...

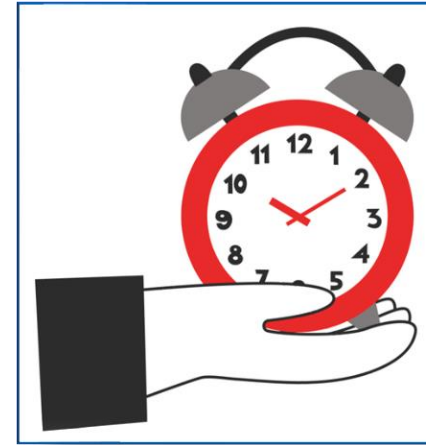
- The content is targeted at the generalist learner, not the addiction specialist
- Think about how the content is being taught and how you might teach it



- Most faculty are here during the entire program...find us in-between sessions with your questions, thoughts....etc.

General Announcements

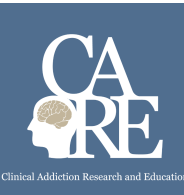
- Please wear your **name tag** at all sessions
- Each session will start on **time**
- Know your **breakout groups**
- **COVID-19** related issues...
 - Masks are optional
 - If you are not feeling well, please do not attend in-person sessions
- **PowerPoints** are on OneDrive (*please notify program staff if you do not have access*)



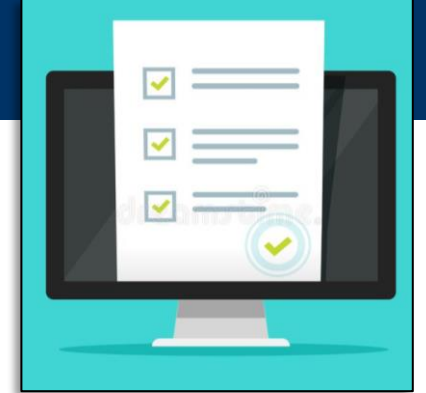
Free CME and MOC (for ABIM or ABP)

Counts towards DEA requirement (*Medication Access and Training Expansion (MATE) Act*) that all DEA registered practitioners complete a one-time 8h training on the management of patients with SUD prior to renewing their DEA registration

- Can find the form on OneDrive
- Email your completed form to Ilana Hardesty at hardesty@bu.edu
- See CME section in Manual for further information



Evaluations and Surveys



- **Pre- and post-knowledge test**
 - **Pre-test** (completed)
 - **Post-test** will be completed at the end of Wednesday
- **Daily evaluations** emailed at the end of each day via **REDCap**
- **Surveys:** All attendees will be asked to complete brief surveys throughout the year. *See evaluation page in the Manual for further information*

Goal: 100% response rate on all evaluations and surveys

Richard Saitz, MD, MPH Achievement Award

*Professor of Medicine & Public Health. Original CARE program faculty.
His research improved how patients with substance use problems are treated in medical settings. He demanded clarity on what evidence supported, and what it did not.*



1963-2022

- A Chief Resident participant (CRITter) will be awarded the *annual* “**Richard Saitz, MD, MPH CARE Program Achievement Award**” based on their **Substance Use Teaching Project (SUTP) quality** (breadth, promotion of evidence-based care, and impact) and **degree of completion** at 10 months post-CRIT
- The CRIT Program Course Directors will select the recipient of the award based on the chief resident’s responses to SUTP specific questions on the CRIT program 10-month survey
- The awardee will receive a plaque, and the awardees program will be notified

2023 Awardee

Meaghan Mobley, DO

Primary Care Chief Resident, Internal Medicine Residency Program
Ascension St. Vincent Hospital; Indianapolis, IN



Integrating Addiction Medicine Curriculum into a Community-Based Internal Medicine Residency Program

- Multifaceted program integrating addiction medicine topics into the existing learning environment of residents and faculty including case-based learning to equip learners to screen, diagnose, and treat opioid, cannabis, alcohol, and stimulant use disorders.
- Preliminary pre/post evaluation found that the education had a significant impact on resident comfort in managing the care of patients with substance use disorders.

Words Matter: Using Non-Stigmatizing Language

“We do not recommend what terms people with disorders should use. Some patients...find benefit to calling themselves an alcoholic or an addict. Changing the language in clinical communication ... will ultimately lead to wider use of accurate non-stigmatizing terms” *Richard Saitz, MD, MPH*

Some Important Organizations (Acronyms)



NIDA (National Institute on Drug Abuse)

- Supports and conducts biomedical and behavioral research on the causes, consequences, treatment, and prevention research on drug use and addiction



NIAAA (National Institute on Alcohol Abuse and Alcoholism)

- Supports and conducts biomedical and behavioral research on the causes, consequences, treatment, and prevention of alcoholism and alcohol-related problems

Some Important Organizations (Acronyms)



SAMHSA (Substance Abuse and Mental Health Services Administration)

- A branch of the U.S. Department of Health and Human Services charged with improving the quality and availability of prevention, treatment, and rehabilitative services for substance use and mental illnesses



ONDCP (Office of National Drug Control Policy)

- Establishes policies, priorities, and objectives to eradicate illicit drug use, manufacturing, and trafficking, drug-related crime and violence, and drug-related health consequences

Trends: *some* Sources of Data



National Survey on Drug Use and Health (NSDUH)

- Annual since 1971, SAMHSA survey on use of illicit drugs, alcohol, and tobacco in the US civilian, noninstitutionalized population aged ≥ 12 years. The **NSDUH** used multimode data collection, in which over **70,000 respondents** completed the survey in person or via the web



Monitoring the Future (MTF)

- Annual since 1975, NIDA funded survey of 8th, 10th, and 12th graders measuring drug, alcohol, and cigarette use by the University of Michigan. **More than 11,800 students** from **112 public and private schools** across the US participated

CARE Program Core Faculty Introductions

1. Approximately how long have you been core CARE program faculty?
2. Brief bio of your work and interests (clinical/educational/research/policy)
3. One thing you like to do when you are not working

CRIT/CFS Core Faculty



Dan Alford



Jeffrey Samet



Angela Jackson



Hallie Rozansky



Ricardo Cruz



Alyssa Peterkin



Amy Fitzpatrick



Jessica Calihan



Lindsay Demers

FIT Core Faculty



Alex Walley

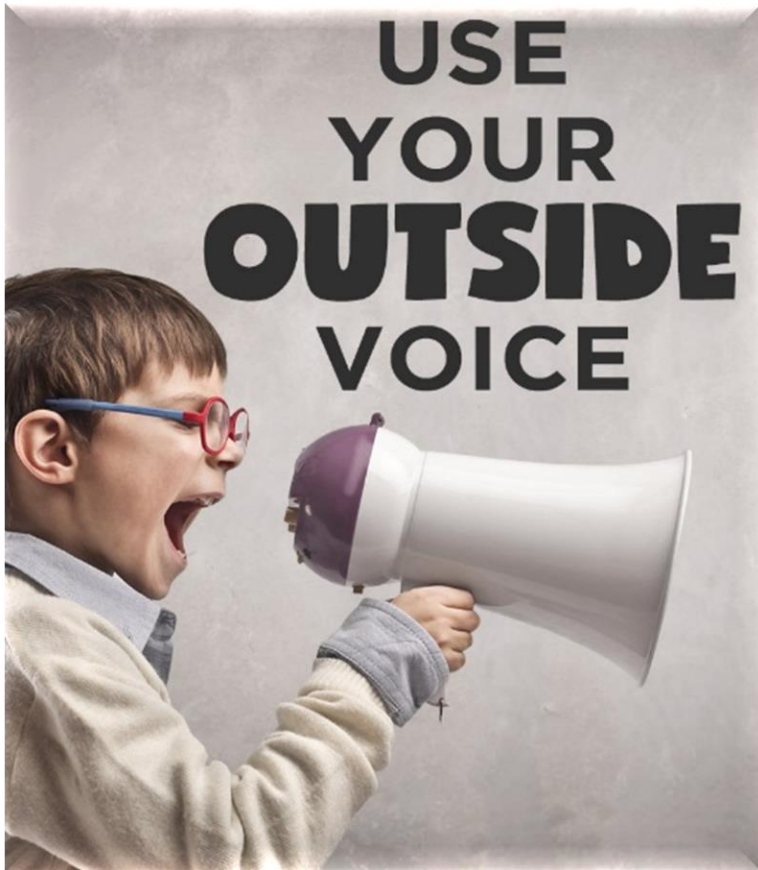


Sabrina Assoumou



Deanna Wilson

Program Participants



- **Please state your....**
 1. **Name**
 2. **Participant Type** (chief resident, faculty mentor, CARE faculty scholar, fellow, special attendee)
 3. **Specialty**
 4. **Institution & State**
 5. **One thing you like to do outside of work**
- **All in 15 seconds or less...**