



RESEARCH IN ADDICTION MEDICINE SCHOLARS PROGRAM 2022-2024 Scholars

Scholars



Brittany 'Britt' Dennis, MBBS, PhD

Addiction Medicine
British Columbia
Centre on Substance
Use
McMaster University

NAC Mentor: Jeffrey Samet, MD, MA,
MPH

Dr. Dennis is an Addiction Medicine Fellow at the British Columbia Centre on Substance Use. She is also supported by the Clinician Investigator Program at McMaster University. She will complete a data linkage investigation using Canadian provincial health administrative data to establish patterns of health care utilization, hospitalizations, and death for hepatitis C positive patients with OUD. She intends to determine the distinct impact of hepatitis C on clinical trajectory and adherence to opioid agonist therapy, estimating trends of hepatic decompensation, critical illness, hospitalization, and death among a cohort of hepatitis C positive patients receiving pharmacotherapy for OUD.



Connie Hsaio, MD

Addiction Psychiatry
Yale School of
Medicine

NAC Mentor: Michael Stein, MD

Dr. Hsaio is an Addiction Psychiatry Fellow at Yale. She has a longstanding interest in addressing health disparities and hopes to develop the research skills to deliver systems-level interventions to improve health outcomes in underserved/under-resourced communities. She completed her training in combined internal medicine and psychiatry and is interested in issues of addiction at the intersection of behavioral health and primary care. Her RAMS project will evaluate interventions to improve sleep quality, including diagnosis and treatment of sleep-disordered breathing in patients receiving methadone or buprenorphine with co-occurring sleep disturbance at an opioid treatment program.



Samara Jinks-Chang, MD, MS, MPH

Addiction Medicine
Johns Hopkins
University

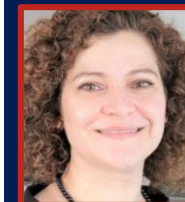
NAC Mentor: Federico Vaca, MD,
MPH

Dr. Jinks-Chang is an Adolescent Medicine and Addiction Fellow at Johns Hopkins University. She is interested in leveraging pediatricians' unique ability to offer intergenerational family services as a means to reduce exposure to household substance use. Her RAMS research project aims to understand caregiver acceptance of pediatricians screening for household substance use, as well as to measure the prevalence of substance use in families of pediatric patients in an urban hospital setting.

Zena Samaan, MBChB, MSc, DMMD, PhD, MRCPsych

Dr. Samaan is an Associate Professor in the Department of Psychiatry and Behavioral Neurosciences, an Associate Member of the Department of Clinical Epidemiology and Biostatistics, and Associate Faculty in the Population Genomics Program at McMaster University. Dr. Samaan is also a staff psychiatrist, member of the Royal College of Psychiatrists, UK and Certified Academic Psychiatrist by The College of Physicians and Surgeons of Ontario. Dr. Samaan is trained in psychiatric genetic epidemiology, with a PhD in psychiatric genetics. Dr. Samaan is also a Staff Psychiatrist at St. Joseph's Healthcare and Hamilton Health Sciences.

McMaster
University



Declan Barry, PhD

Dr. Barry is a licensed clinical psychologist and an Associate Professor in the Department of Psychiatry and the Child Study Center at Yale School of Medicine. He is the Founding Director of the APT Foundation Pain Treatment Services. His research is aimed at developing and evaluating treatments for co-occurring opioid use disorder and chronic pain, and examining the role of sociocultural, psychological, and biological factors in the occurrence and treatment of pain and addictions. Dr. Barry has published over 100 peer-reviewed articles, is a multiple principal investigator on two NIH funded studies, and Associate Editor of the *Journal of Immigrant and Minority Health* and is Co-Editor of the Substance Use Disorder Section at *Pain Medicine*.

Yale School of
Medicine



Pamela Matson, PhD, MPH

Dr. Matson is an Assistant Professor of Pediatrics in the Division of Adolescent and Young Adult Medicine at Johns Hopkins School of Medicine and the Research Director for the Adolescent Medicine Fellowship. Dr. Matson is an Epidemiologist who holds an MPH in Epidemiology of Microbial Diseases from Yale University School of Public Health and a PhD in Infectious Disease Epidemiology from Johns Hopkins Bloomberg School of Public Health. Her research mainly focuses on how relationship context manifests in unwanted outcomes, including sexually transmitted infections, substance use and intimate partner violence and how the broader social context of structural disadvantage impacts adolescent relationship functioning.

Johns Hopkins
University



Mentors



Chobanian & Avedisian School of Medicine
Department of Medicine



Yale SCHOOL OF MEDICINE



RESEARCH IN ADDICTION MEDICINE SCHOLARS PROGRAM 2022-2024 Scholars

Scholars



Eric Kutscher, MD

**Addiction Medicine
NYU Langone Health**

NAC Mentor: Ned Nunes, MD

Dr. Kutscher is an Addiction Medicine Fellow at NYU Langone Health/Bellevue Hospital Center in New York City. He has a passion for harm reduction, sexual health, and patient centered primary care, particularly for marginalized and underserved communities. He is currently studying longitudinal outcomes for individuals involved in the criminal justice system treated with buprenorphine versus methadone, particularly investigating overdose mortality, HIV, and hepatitis C.



Gabriela Reed, MD

**Addiction Medicine
Boston Medical Center**

NAC Mentor: Patrick O'Connor, MD, MPH

Dr. Gabriela Reed is currently an Addiction Medicine Fellow at Boston Medical Center. She completed her primary care track internal medicine residency training at the University of California, San Francisco. Clinically, she is passionate about integrating addiction care into primary care settings. Her research focus is on understanding and addressing racial and ethnic inequities in substance use disorders, with a particular interest in Spanish-speaking and Latinx communities. Her RAMS research project is an analysis of racial and ethnic differences in opioid overdose risk behaviors among people with a prior opioid overdose to inform future tailored overdose prevention interventions.



Claire Simon, MD

**Addiction Medicine
University of Washington**

NAC Mentor Roger Weiss, MD

Dr. Simon is a family physician and Addiction Medicine Fellow at University of Washington. She is interested in integrating addiction medicine into primary care settings as well as improving care for people with substance use disorders who are pregnant or parenting. Her RAMS project will describe treatment initiation and engagement among primary care patients with substance use disorder symptoms in order to understand gaps in treatment and inform design of interventions to address these treatment gaps.

Joshua Lee, MD, MSc

Dr. Lee is a Professor of Population Health and Medicine/General Internal Medicine and Clinical Innovation at NYU Grossman School of Medicine and Director of the ACGME-accredited Addiction Medicine Fellowship. He is a clinician-researcher focused on addiction pharmacotherapies in primary care and criminal justice populations. He has conducted multiple NIH clinical trials examining the use of naltrexone and buprenorphine opioid and alcohol treatments in criminal justice involved adults, at release from jail, and within community primary care settings. He leads the NYU Langone 'Hub' of the NIDA Justice and Community Outcomes and Innovation Network (JCOIN).

New York University



Miriam Harris, MD, MSc

Dr. Harris is an Assistant Professor of Medicine at Boston University School of Medicine and an addiction expert at Boston Medical Center. Dr. Harris's research interests focus on the intersection of women's health and addiction including: increasing sexual, reproductive, and HIV prevention services in substance use treatment spaces, substance use treatment while pregnant and parenting, and gender-responsive harm reduction. Clinically, she provides primary care and office-based addiction treatment in the Women's Health Unit at Boston Medical Center and attends on the General Medicine units and the Addiction Consult Service at Boston Medical Center.

**Boston University
Chobanian &
Avedisian School of
Medicine**



Katharine 'Kathy' Bradley, MD, MPH

Dr. Bradley is a Senior Investigator at Kaiser Permanente Washington Health Research Institute and a General Internist at Washington Permanente Medical Group. Her research focuses on management of alcohol use disorders (AUDs) and other SUDs in primary care. She led an NIAAA study on collaborative care for primary care patients with unhealthy drinking, as well as a study to develop a patient decision aid for shared decision-making about AUDs. Dr. Bradley is also an MPI of the Health Systems Node of the NIDA CTN, and she leads the CTN PROUD (Primary care Opioid Use Disorders) trial. Dr. Bradley was previously supported half-time by NIAAA to mentor early-career clinician-researchers interested in improving care for unhealthy alcohol use and is an Affiliate Professor of Medicine and Health Services at UW.

**Kaiser Permanente
University of Washington**



Mentors



Yale SCHOOL OF MEDICINE