


# HEART

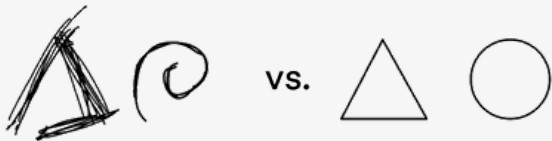
## Healthcare Educator's Art

[Design Course \(Link\)](#)

 Chobanian & Avedisian  
School of Medicine

### Visual Clarity

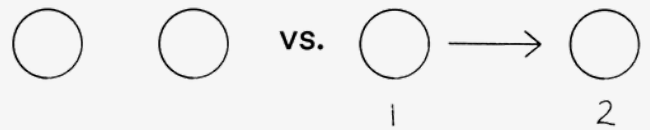
simplify without sacrificing meaning and understanding



01:30 - Visual Clarity

### Sequence and Directionality

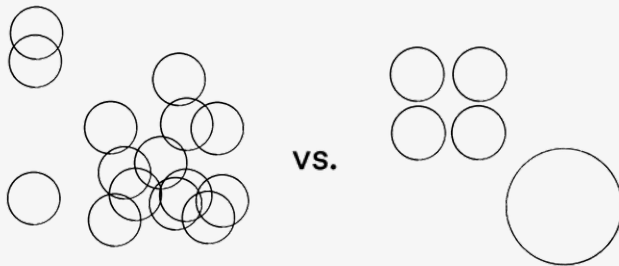
demonstrate temporal and spatial relationships



04:35 - Sequence and Directionality

### Layout

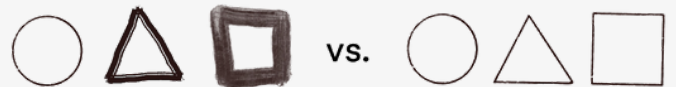
arrange to guide attention



02:20 - Layout

### Style

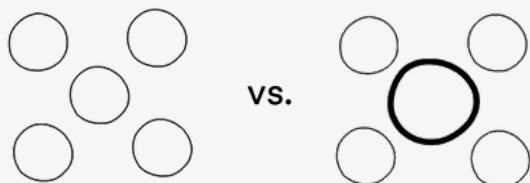
stay consistent



05:30 - Style

### Hierarchy

emphasize what is important



03:50 - Hierarchy

### Color

create contrast and emphasis



05:55 - Color

# HEART

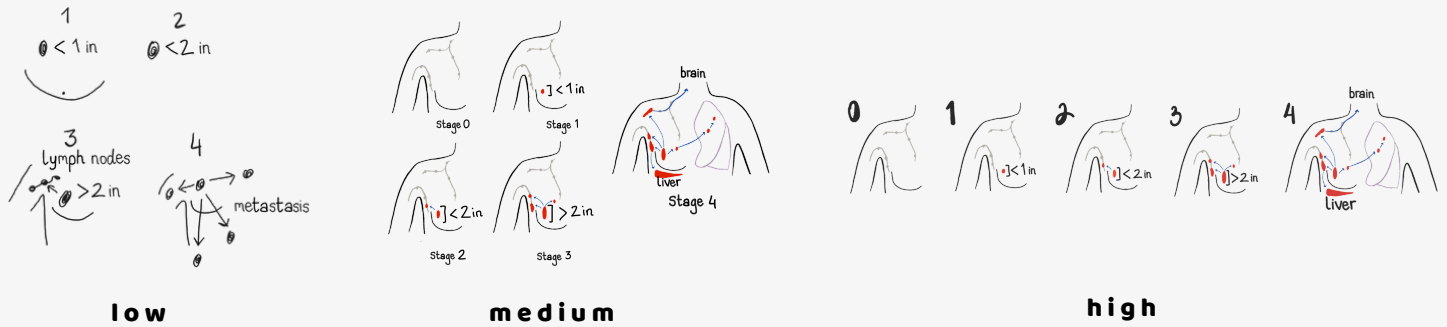
## Healthcare Educator's Art

[Design Course \(Link\)](#)

**BU** Chobanian & Avedisian  
School of Medicine

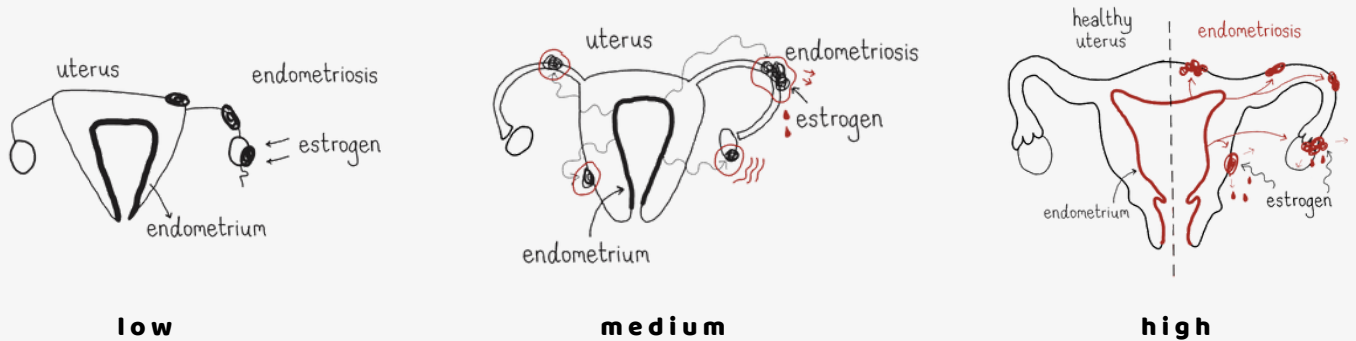
### Cancer Staging

07:35 - Clinical Examples



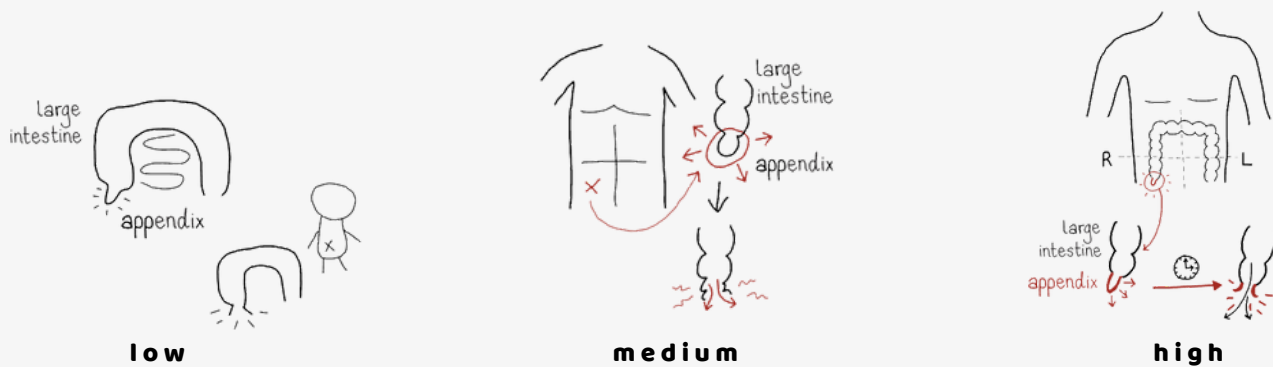
### Endometriosis

09:35 - Clinical Examples



### Appendicitis


12:00 - Clinical Examples



# HEART

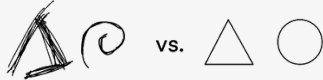
## Healthcare Educator's Art

### Summary

 Chobanian & Avedisian  
School of Medicine

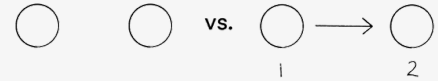
### Visual Clarity

simplify without sacrificing meaning and understanding



### Sequence and Directionality

demonstrate temporal and spatial relationships



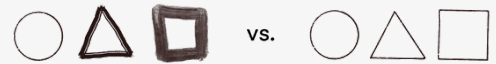
### Layout

arrange to guide attention



### Style

stay consistent



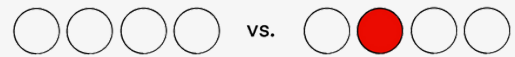
### Hierarchy

emphasize what is important

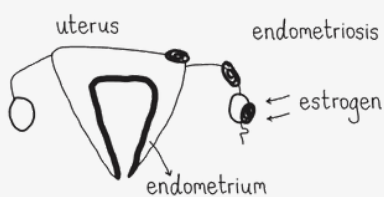


### Color

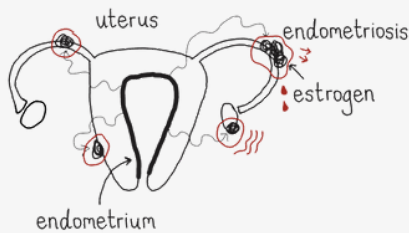
create contrast and emphasis



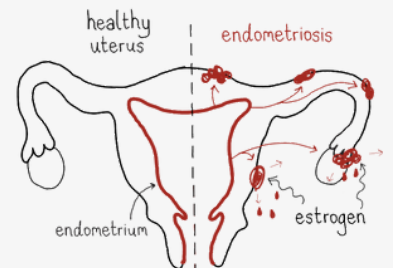
### Endometriosis



low

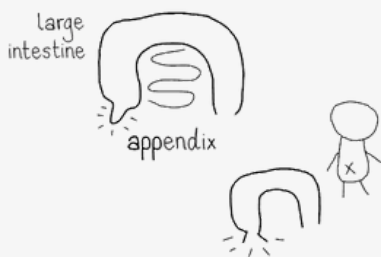


medium

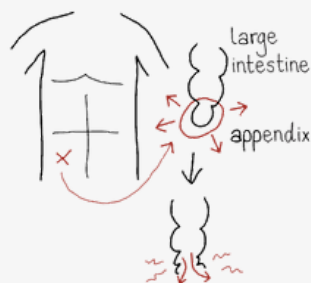


high

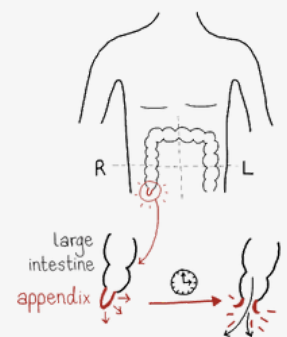
### Appendicitis



low



medium



high