

Department of Medicine
Faculty Meeting
September 19, 2012

Announcements

Review of 2011-12 Academic Year
Goals for 2012-13 Academic Year

Announcements

BMC entered negotiations with Epic for new EMR-installation spring-summer of 2014

BMC Employee Engagement Survey starting next week

Eric Poon, M.D. appointed Chief Medical Information Officer September 2012

Searches:

GI Section Chief- Hemant Roy, M.D. starts 1/1/13

Geriatrics Section Chief

Endocrinology Section Chief

Vice Chair, Clinical Affairs

Director, Primary Care

Evans Board Election

Officers ending four year term:

Stephanie Lee, M.D., Ph.D., David Nunes, M.D.
and Emelia Benjamin, M.D.

Propose:

Electing: Alan Farwell, M.D. and Art Theodore,
M.D.

Appoint: Katya Ravid, Ph.D.

Evans Centennial Celebration

October 5, 6, 2012

8:30-12:45 pm Evans Center for Interdisciplinary Biomedical Research Retreat

- **Rudolph Jaenisch, Ph.D.**, Professor of Biology, Whitehead Institute , MIT *“Cellular Reprogramming: Are We on the Brink of Treating Parkinson, Diabetes and Other Diseases? Facts, hypotheses, unresolved issues”* ARC directors: *“Milestones in Interdisciplinary Research and Discovery”* **Andrei Ruckenstein, Ph.D.**, BU Vice President and Associate Provost for Research *“Interdisciplinary Research at BU: Highlights”* Round Table Discussions (faculty and trainees); **Katya Ravid, Ph.D., D.Sc.**, Director, ECIBR, **Ronald Corley, Ph.D.**, Associate Provost for Research, BUMC

1:00-3:30 Symposium: *“Charles Darwin, Charles River Campus, the Medical and Evans Centers: Looking Forward”*, **Katya Ravid, DSc/PhD**, *“A Journey to the Antigen and Beyond: An Evans Odyssey”*, **David J. Salant, MD**, *“Next Generation Regeneration: Stem Cells and the Pursuit of Personalized Medicine”*, **Darrell Kotton, MD**

4:30-7:00 pm Section and Residency Socials

Evans Centennial Celebration

October 6, 2012

9:00-11:00 am

“The Evans: A Century of Challenges and Successes”, Wilkins
Visiting Professor: **Aram V Chobanian, M.D.** President
Emeritus, BU, Dean Emeritus, BUSM

“American Journey to Health Equity”, **Louis Sullivan, M.D.**
former US Secretary of Health and Human Services,
former President, Morehouse School of Medicine

*“Medical Education: Part of the Problem or Part of the
Solution”*, **Catherine Lucey, M.D.** Vice Dean for
Education, UCSF

11:00 – 2:00 pm

Poster Session, Hiebert Lounge

Evans Centennial Celebration

October 6, 2012 (con't)

2:00- 5:00 pm

"Non-clinical influences of Physician Clinical Decision Making" **Stephen Davidson, Ph.D.**
Professor, BU School of Management

"Creating a Sustainable Healthcare System" **Judy Ann Bigby, M.D.**, Secretary Health and
Human Services, Commonwealth of Massachusetts

"A Big Data Approach to Better Understanding, Diagnosing and Treating Disease"
Ingelfinger Visiting Professor, **Eric Schadt, Ph.D.**, Professor and Chairman, Department
of Genetics and Genomic Sciences, Director, Institute for Genomics and Multi-scale
Biology, Mt Sinai School of Medicine

"Personalized Medicine and Drug Development: Time for a new paradigm", **Joseph
Loscalzo, M.D., Ph.D.**, Chairman, Department of Medicine, Brigham and Women's
Hospital

"Fulfilling the Promise: From Mouse to Man" **Susan Shurin, M.D.**, Deputy Director of
National Heart, Lung, and Blood Institute NIH

7:00 pm

Gala Dinner: John Joseph Moakley US Courthouse, One Courthouse Way, Boston

Grand Rounds

Sept 21, 2012: *Implementing the Affordable Care Act: The Supreme Court and the Constitution.* **George Annas, J.D., MPH**, Chair, Health Law, Bioethics & Human Rights. BUSPH; William Fairfield Warren Distinguished Prof., BUSPH **Wendy Mariner, J.D., MPH**, Health Law, Bioethics & Human Rights, BUSPH Edward R. Utley Professor, BUSPH

Sept 28, 2012: *The Management of Osteoporosis with Bisphosphonates: For Whom and How Long?* **Clifford J. Rosen, M.D.**, Director, Clinical & Translational Research, Maine Medical Center, Professor of Medicine, Tufts University School of Medicine

ARC Seminar

"Physiological Impact of Adipose Tissue Dysfunction", **Philipp Scherer, PhD**, Professor Gifford O. Touchstone Jr. and Randolph G. Touchstone Distinguished Chair in Diabetes Research; Departments of Internal Medicine and Cell Biology UT Southwestern Medical Center **4:30 pm on Wednesday, September 19, 2012, Ground Floor Auditorium, 670 Albany Street**

Department of Medicine Annual Review to Faculty

September 19, 2012

New Faculty and Promotions 2011-12

Appointments 2011-12

Section	Faculty Member	Rank (anticipated)
Gastroenterology	Tom Grammatopolous	Research Assistant Professor
Gastroenterology	Tova Meshulum	Research Assistant Professor
Endocrinology	Lauren Collins	Clinical Instructor
Epidemiology	Devyani Misra	Instructor
Rheumatology	Hans Dooms	Assistant Professor
Rheumatology	Peter Grayson	Assistant Professor
Rheumatology	Shizhong Bu	Research Instructor
Pulmonary	Praveen Govender	Assistant Professor
Preventative Medicine	Vanessa Xanthakis	Assistant Professor
Renal	Ashish Upadhyay	Assistant Professor
Renal	Lauren Stern	Assistant Professor
Renal	Sandeep Ghai	Instructor
Infectious Diseases	Gopal Yadavalli	Assistant Professor
Infectious Diseases	Jai Marathe	Instructor
Infectious Diseases	Sabrina Assoumou	Instructor
Infectious Diseases	Xianbao He	Research Instructor
Infectious Diseases	Ben Linas	Assistant Professor
Infectious Diseases	Nahid Bhadalia	Assistant Professor
Infectious Diseases	Cassandra Pierre	Instructor

Appointments 2011-12

Section	Faculty Member	Rank (anticipated)
---------	----------------	--------------------

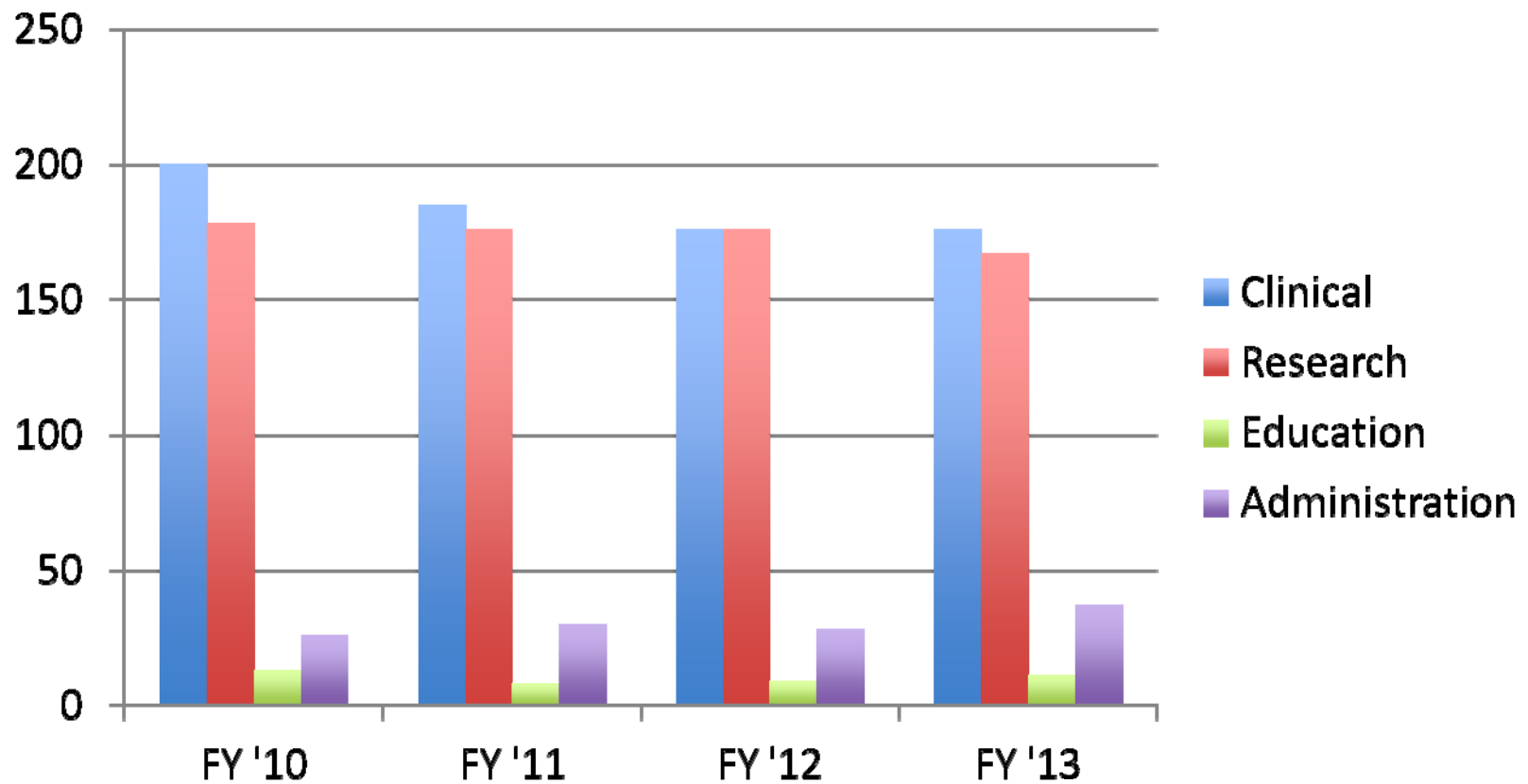
Geriatrics	Julia Barbosa	Clinical Instructor
Geriatrics	Patricia Takach	Clinical Instructor
General Internal Medicine	Jennifer Seigel	Assistant Professor
General Internal Medicine	Amy Linsky	Assistant Professor
General Internal Medicine	Marshall Fleurant	Assistant Professor
General Internal Medicine	Ethan Bornitker	Instructor
General Internal Medicine	Dan Cottrell	Instructor
General Internal Medicine	Mary Warner	Assistant Professor
General Internal Medicine	Meredith d'Amore	Instructor
Hematology/Oncology	Jennifer Ward	Instructor
Computational Biomedicine	Evan Johnson	Assistant Professor
Computational Biomedicine	Stefano Monti	Associate Professor

Promotions 2011-12

Section	Faculty Member	Rank
---------	----------------	------

Gastroenterology	Wanda Blanton	Assistant Professor
Endocrinology	Amanda Powell	Assistant Professor
Cardiology	Fuzhong Qin	Research Associate Professor
Vascular Biology	Marcus Bachschmid	Assistant Professor
Vascular Biology	Reiko Matsui	Assistant Professor
Renal	Kei Yasuda	Assistant Professor
Infectious Diseases	Richa Tandon	Assistant Professor
Pulmonary	Kevin Wilson	Associate Professor
Geriatrics	Tom Perls	Professor
General Internal Medicine	Elaine Hylek	Professor
General Internal Medicine	Catherine Rich	Assistant Professor
General Internal Medicine	Tracy Battaglia	Associate Professor
General Internal Medicine	James Meisel	Associate Professor

Distribution of Faculty Effort Department of Medicine



Faculty Distribution by Rank

Rank	Total	Women (%)	URM's (%)
Professor	95	22 (23)	1 (1.1)
Associate Professor	75	26 (35)	4 (5.3)
Assistant Professor	199	101 (51)	7 (3.5)
Instructor	63	39 (62)	3 (4.8)
Total for all Ranks	434	188 (43)	15 (3.5)

Evans Junior Faculty Merit Awards 2011-12

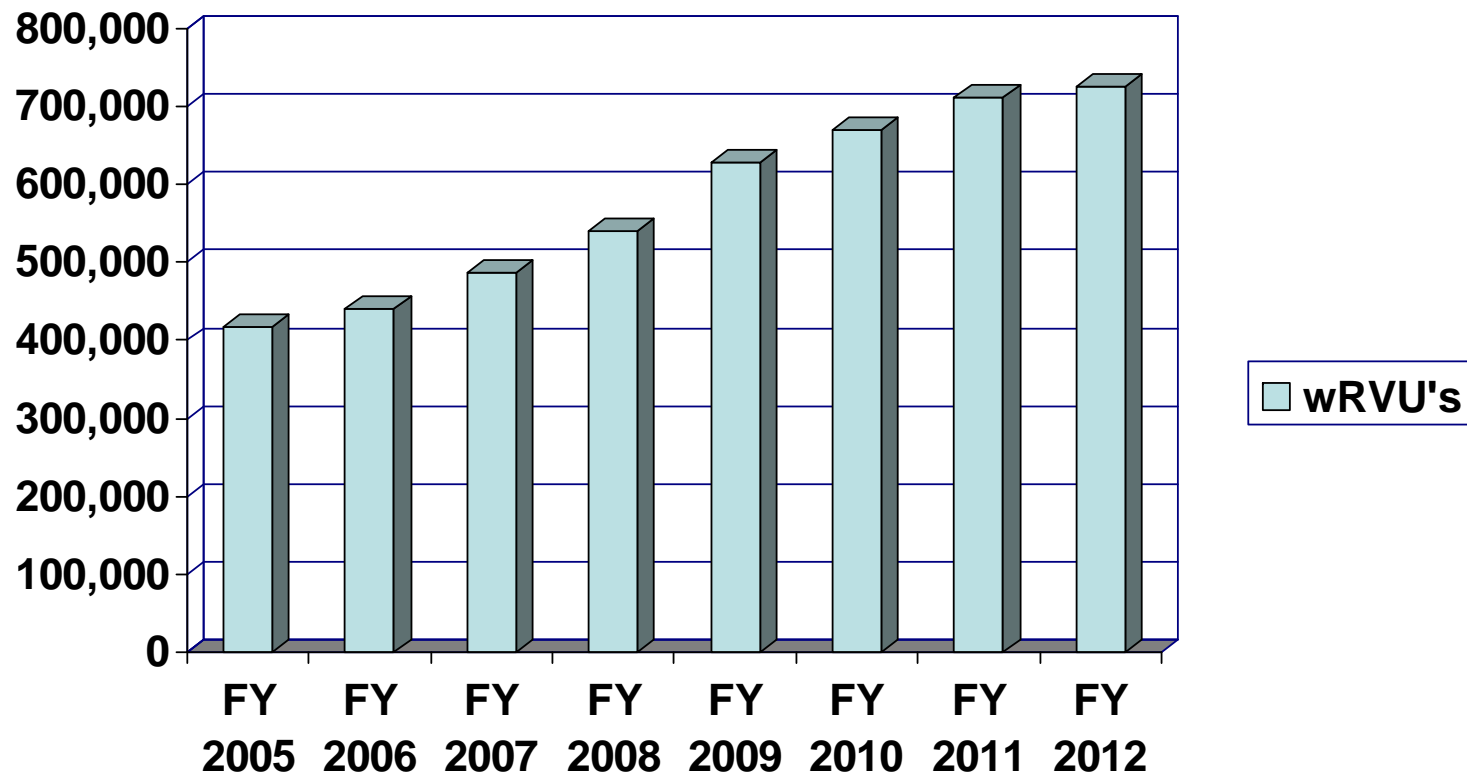
Alex Walley, M.D., Assistant Professor, General Internal
Medicine Section

Renda Weiner, M.D., Assistant Professor, Section of
Allergy, Pulmonary and Critical Care

Clinical Program 2011-12

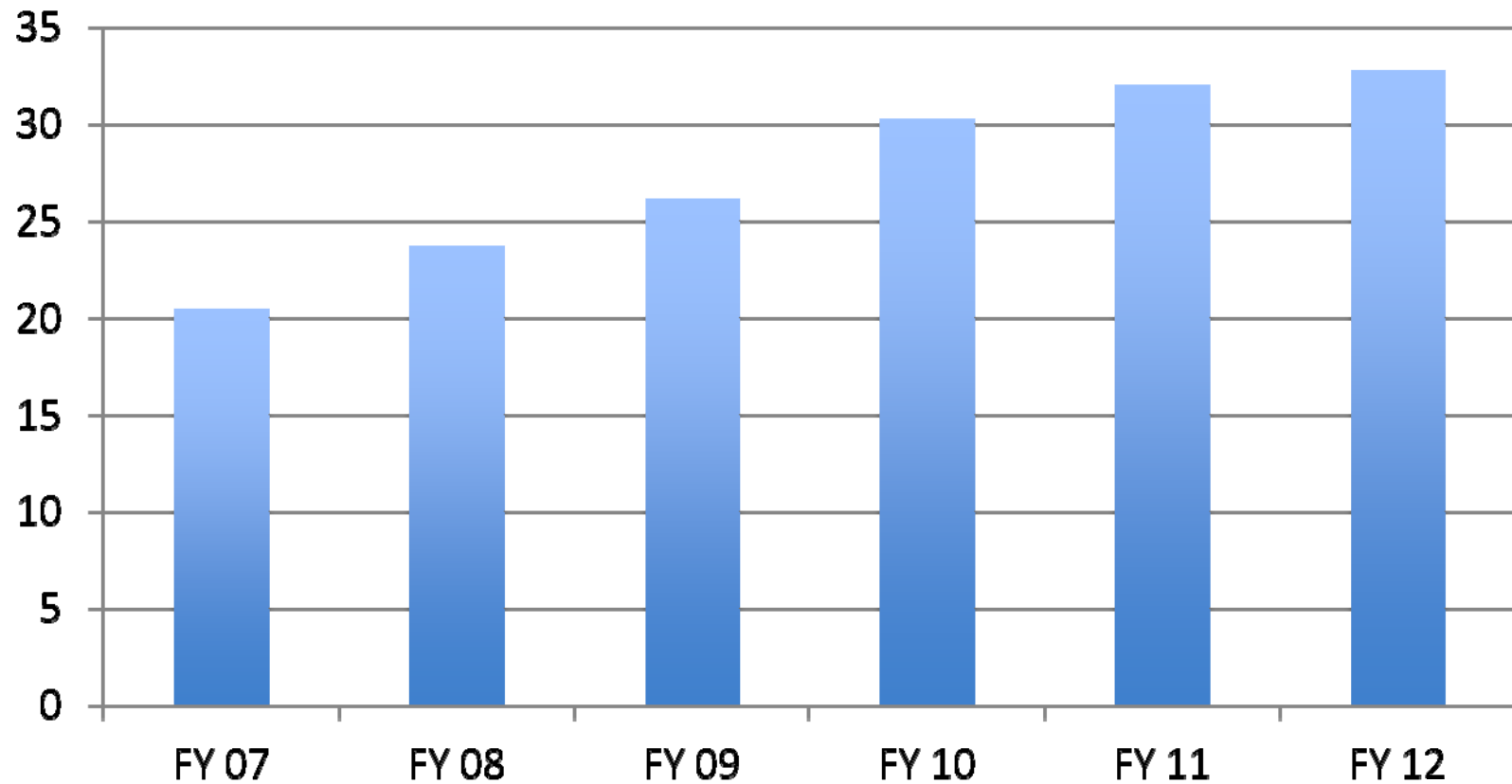
Clinical Volume (wRVU's)

Department of Medicine

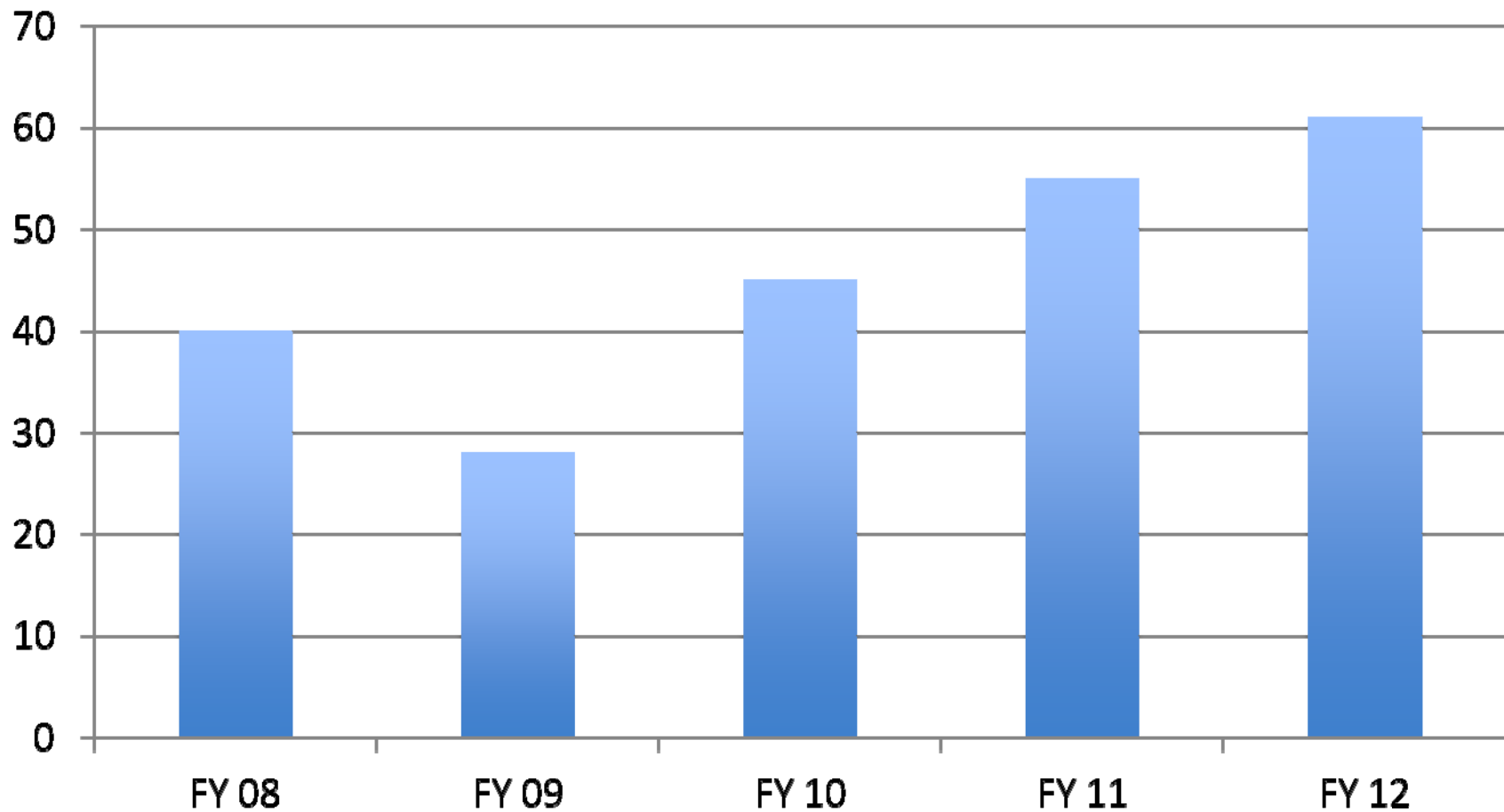


Collections

Department of Medicine (\$M, excluding Free Care)



New Patient Access (% New Pts < 15 days)



Clinical Practice Metrics

Department of Medicine

Positives:

- Ambulatory Visits increased by 3.3%
- Coding compliance increased from 75% to 84%
- Over-coding decreased from 11% to 8%
- Payment per wRVU increased slightly from \$44.54 to \$45.02
- Charge Denials decreased from 14% to 12%

Negatives:

- Discharges decreased by 7% and ALOS decreased by 2% to 4.56 days
- Net collection rate unchanged at 94%
- Days in Accounts Receivable increased from 34.6 to 36.6 days

Inpatient Observed:Expected Mortality

Inpatient Observed: Expected Mortality steady at 1.0
(unchanged for '11-12, down from 1.4 two years ago)

All mortalities on the inpatient service reviewed

Key areas identified:

- Sepsis mortality reduction

- CHF mortality reduction

- Anticoagulation management

Continued Initiatives:

- Twice daily rounds by attending and resident

- Reduce barrier to ICU admissions

- Triggers for attending notification

Inpatient Redesign

Call schedule modified to improve workload distribution and duty hour compliance

Teams more geographically based July 1, 2011

Focus on multidisciplinary rounds and care teams

Focus on bedside teaching

Goals Clinical Program 2012-13

Increase outpatient and inpatient volume

Improve Access for New Patients

80% New Patients seen within 14 days

Increase new patient volume

Improve in all six Quality Domains (STEEEP)

Reduce Inpatient Observed to Expected Mortality

Enhance Team-based care on inpatient service

Goals

Clinical Program 2012-13 (con't)

Improve Revenue Cycle Management

Increase productivity of clinical practice

Improve practice infrastructure/environment

Develop Marketing Strategy with BU and BMC

Increase Experience and Performance in
Population Management

Enhance Primary Care- seek approval for
Primary Care Medical Home

Research Program 2011-12

Research Activities 2011-12

Funding up – BUSM; down – BMC

Space Survey and Reallocation

Initiated in 2011-12, space allocation committee chaired by **Joe Vita, M.D.**, realignments underway

Research IT

John Meyers, Ph.D. established high performance tiered HIPAA compliant digital data storage system and a second high performance virtualized server to facilitate clinical research

Cores

Number of faculty using cores increased from 76 to 100 in 2011-12

Usage increased from 20,000 to 40,000 hours

36 grants funded using the core instrumentation for total of over \$35 m;

Clinical Research Resources Office and Bioinformatics Cores in the CTSI, and Biostatistical Core under the direction of **Janice Weinberg, Ph.D.** also supported

Research Funding 2011-12

Bridge Funding: Awards to Five faculty

Pilot Funds: 15 Awards (collaboration with BOAIC-Pepper Center, CTSI, Wing Tat Lee Fund of BUSM, Center for Nano-technology and Nano-biology)

Evans Center for Interdisciplinary Biomedical Research

10 ARC's and 2 Pre-ARC's funded

Over **150 Faculty**

- 83 from Department of Medicine

- 28 from basic science departments

- 5 from dental school and 25 from Charles River Campus of BU

- 25 collaborators from outside BU

184 co-PI interdisciplinary **publications**

48 funded grants and one PPG (out of 97 applications)

Participation by **63 graduate students** and **30 post-doctoral fellows**

Two new courses: Biological core technologies and Nanomedicine

R25 award with Drs. Faller and Goldberg on Cancer Nanotechnology

Goals for 2012-13

Research Program

Begin **space re-allocation** based on programmatic needs and performance metrics

Implement **Metabolomics core**

Further develop **interdisciplinary research**

Continuously **evaluate** Department's Research investments

Support **CTSI** renewal application

Enhance **computing capacity**

Work with **BU and BMC** to facilitate investments in research programs

Education Program 2011-12

Education Program Activities

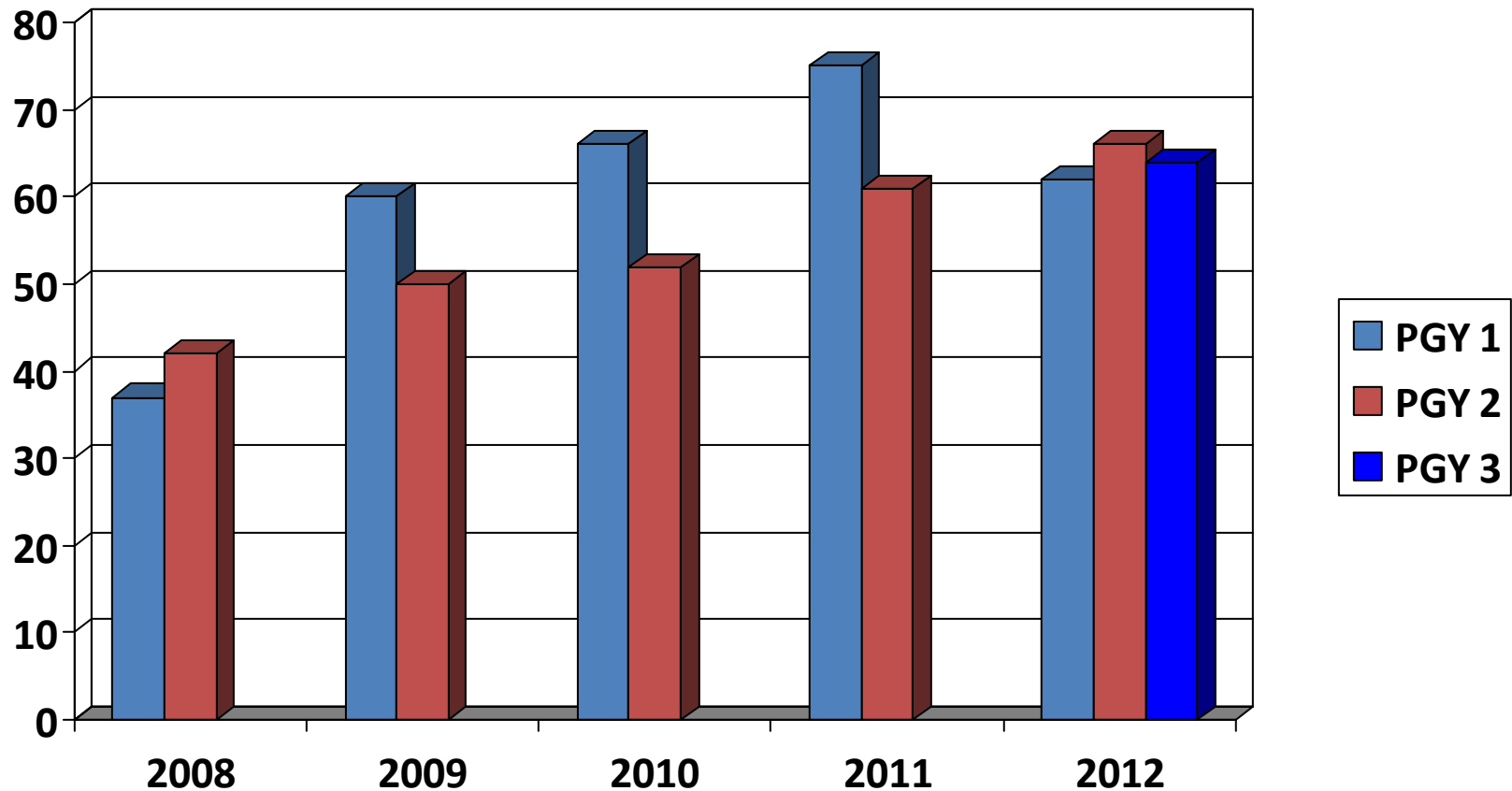
2011-2012

New Residency Training Program Director: **Gopal Yadavalli, M.D** and four new Associate Program Directors: **Catherine Rich, M.D., Craig Noronha, M.D., Ashish Upadhyay, M.D., and Sheilah Bernard, M.D.** (Rachel Simmons, M.D. started in August 2012)

New call system and team deployment for inpatient rotations

Medical Student evaluations of core clerkships rated good or excellent >90% of respondents

In-Training Examination Results Medical Residents (AY 2008-12)



Education Program

Goals for 2012-13

Develop tracks in residency program

Urban health

Global health

Clinician Educator

HIV

Patient Safety and Quality

Maintain **full compliance** with ACGME regulations

Enhance **research** experiences

Enhance **faculty teaching and evaluation skills** to meet
ACGME requirements

Expand training opportunities for medical student clerkships

Refine **Graduate Programs** in Molecular Medicine and
Nutrition and Metabolism

Faculty Development and
Diversity Program
2011-12

Faculty Development and Diversity Activities 2011-2012

Interdisciplinary longitudinal mentoring program for 18
early career faculty

Offered 21 faculty development seminars

Distributed grants to 27 faculty for career development
training

Hosted networking dinners for women, minority, and
LGBT faculty

Faculty Development and Diversity Goals 2012-13

Enhance diversity of faculty

Faculty Career Flexibility

Mid-Career Faculty Longitudinal Mentoring

Enhance departmental community

Increase faculty teaching skills

Administrative Goals 2012-2013

Collaborate with Section leadership to consistently document variances > 5% in Section financials

Optimize clinical revenue by:

- Maintaining Days in AR of 36 or less

- Achieving a 9% or less denial rate excluding Free Care

- Achieving NCR >94%

- Increasing co-pay collections as a percentage of charges by 2% compared to prior year

Achieve clinical coding compliance of >85%

Facilitate system based competency training for new managers

Summary

Continued growth

Financial challenges

Increased demands

Resourcefulness of faculty

External and internal environment require enhanced performance

Clinical- population management, productivity, STEEP

Research –funding level, approaches to discovery, need for career development

Education – demonstrate competencies in trainees

Administrative – increased compliance, improved efficiency, effectiveness

Keys to our success

Team

Service

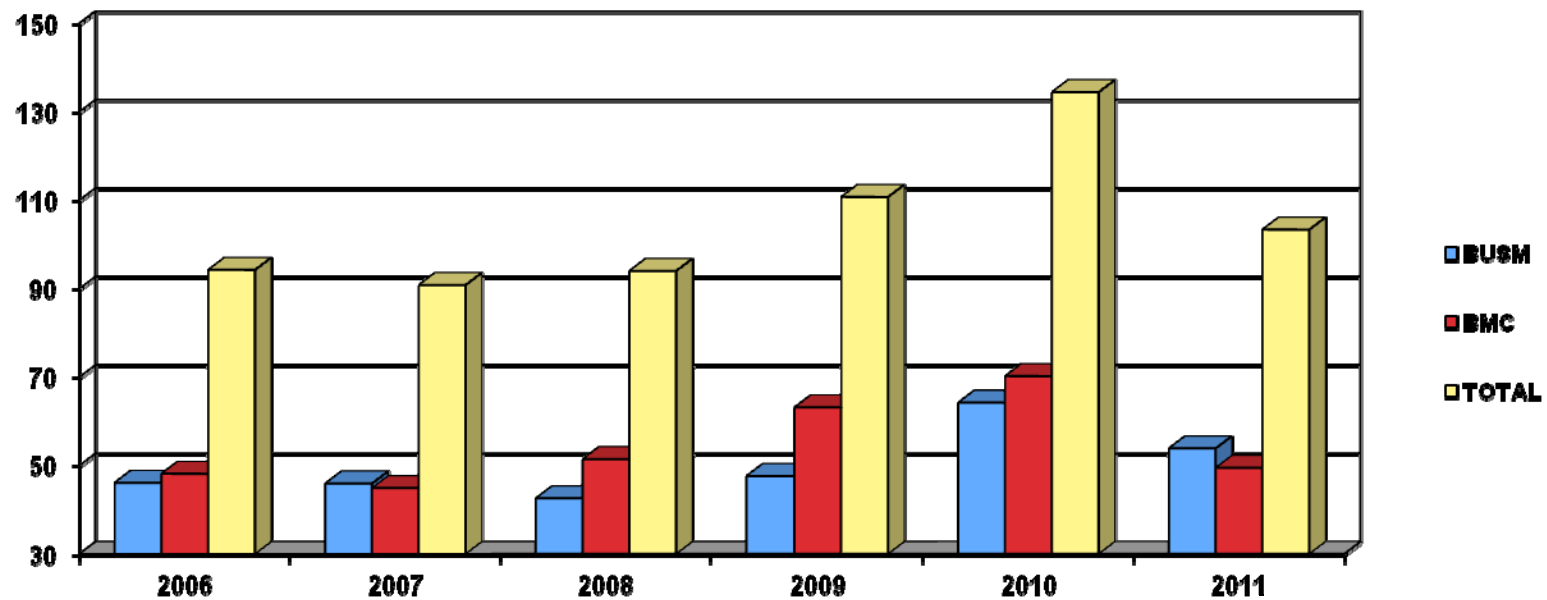
Communication

Excellence

RESEARCH FUNDING

Department of Medicine

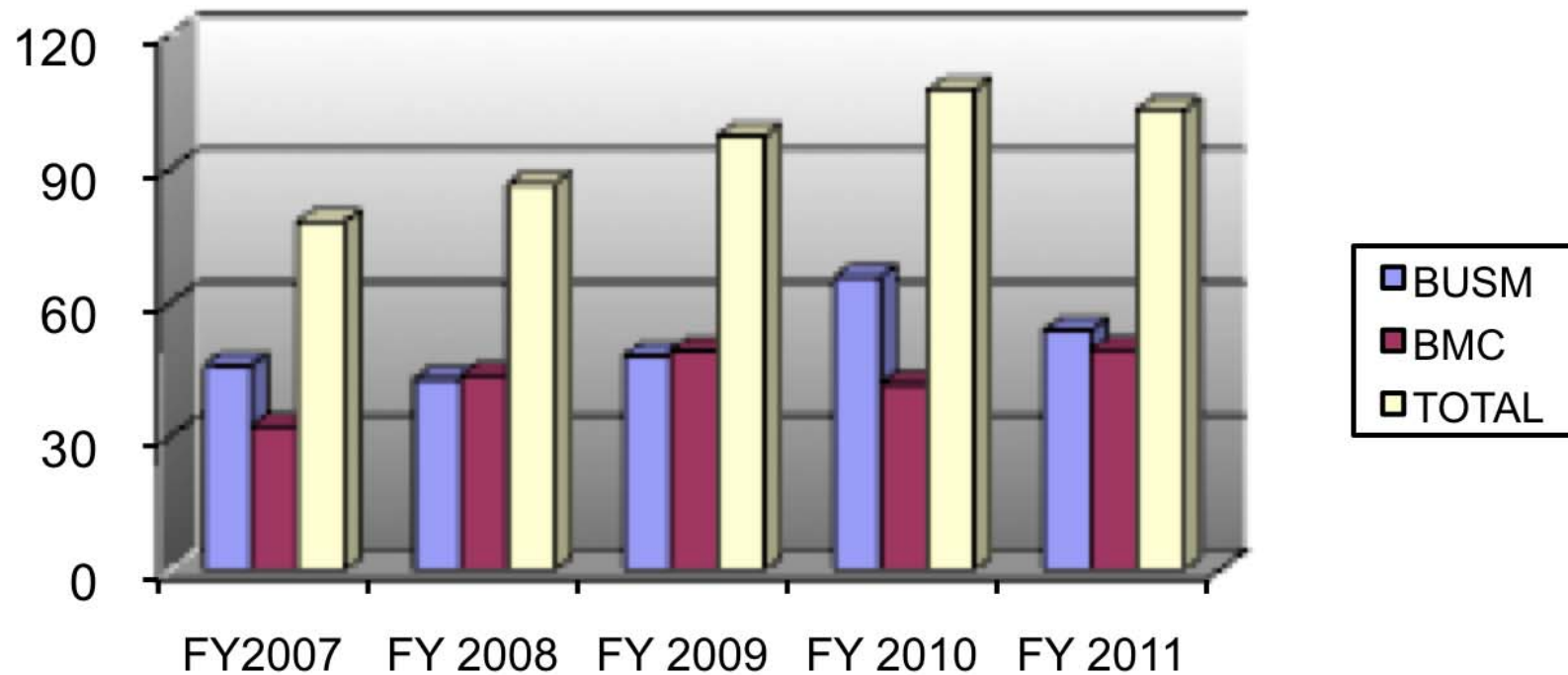
(excludes VA, NEIDL, RWMC)



RESEARCH FUNDING

Department of Medicine

(excludes VA, RWMC and NEIDL)



Source: Monthly reports provided by BMC and BU as follows: Proposal_Awards_Med (BMC), MEDAffiliated.xls (BU) and MED.xls (BU)