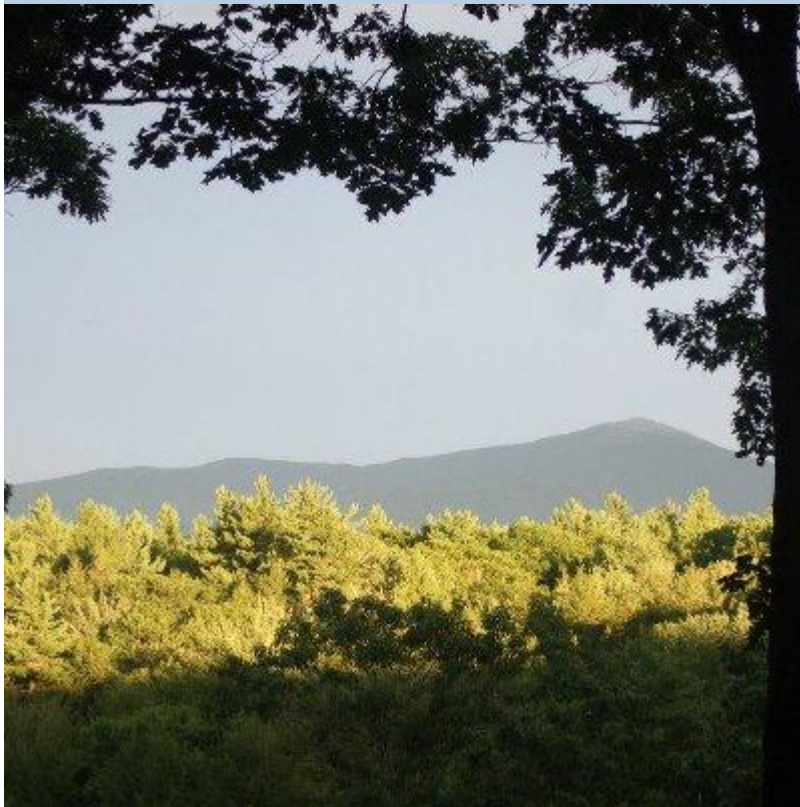




Division of Graduate Medical Sciences

[Office of Postdoctoral Affairs](#)

**FRIDAY, AUGUST 10, 2012**



**PHOTO FROM MY VACATION IN NH**

Many exciting things are being planned by OPA. Don't miss any of them:

**GMS Career Development**



Looking for assistance as you go through your job search? If so, take advantage of GMS career development resources and support. Career Consultant, Lauren Celano will help you with resume and cover letter review, interviewing skills and mock interviews, negotiating a job offer, identifying career goals, networking tips, and more.

**Lauren's Office Hours:**

**On site:** Second and Fourth Friday of each month from 3:30 – 5:30 p.m., Room L-107, BU School of Medicine Bldg.

**Off site:** First and Third Saturday of each month from 10:00 a.m. – noon.

**Email** Lauren Celano [lauren@propelcareers.com](mailto:lauren@propelcareers.com) to schedule an appointment

**Book your appointment for Friday, August 24 now!**

---

**Career Development Monthly Seminar Series: August: Networking Insights**

**Date and Time:** Tuesday, August 14, 2012 4:00 – 5:00 P.M.

**Location:** Room L-203, 72 East Concord St., BU School of Medicine

**Registration:** Email [Yolanta@bu.edu](mailto:Yolanta@bu.edu)

**Save the Date for the National Postdoc Appreciation Week: September 17 – 21, 2012** Two exciting events are being planned:

**Ice Cream Social** on Talbot Green, Tuesday, September 18 from 1:00 – 3:30 P.M.

**Film Screening and Panel Discussion:** *Losing Control*, Thursday, Sept. 20 from 5:30 – 8:00 P.M. at Keefer Auditorium 72 East Concord Street, details to follow

**Volunteers needed:** if interested, contact: [Yolanta@bu.edu](mailto:Yolanta@bu.edu)

You may access other organizations events along with ours [here](#).

**Tufts University Postdoc Positions**

[Science Career Path](#)

[Dana-Farber/Harvard Cancer Center & Dana-Farber Cancer Institute CURE Invitation](#)

[Funding Opportunities](#)

[Life Science Research Foundation, deadline: October 1<sup>st</sup>.](#)

[Irvington Institute Fellowship Program of the Cancer Research Institute](#)

[Funding Opportunities – deadlines October 2012](#)

[Massachusetts Life Sciences Center Weekly Digest of Events 7-30-12](#)

[AAAS Policy Alert 8-8-12](#)

[AAAS Science Roundup The Monthly Review of Science Highlights](#)

[National Postdoctoral Association Newsletter](#)

[Propel Careers Newsletter](#)

[Items of Interest from the GreatMail](#)

[FreezerPro Software Now Available to the BUMC Community](#)

**New Articles Relevant for Postdocs:**

[Business and Academia can work together: it's only a matter of method!](#)

## [Off-Label Drug Disclosure Inadequate](#)

## [Best Places to Work Academia, 2012](#)

### **HOW HARD CAN IT BE?**

[Team members share the challenges of Curiosity's final minutes to landing on the surface of Mars](#)

### **New Benefit: [Child Services for BU Medial Campus](#)**

## [Cross-Cultural Group for People in Cultural Transition](#)

Karen Bouhard, LICSW of Faculty and Staff Assistance Program, spoke with a therapist who is offering a therapy group in Coolidge Corner for people who are dealing with temporary or permanent cultural transitions. She thought it might be appropriate for many of the post-docs. The Boston Institute for Psychotherapy, which is hosting the group, has an excellent reputation, and she expects the quality of the work will be very high. They accept most health insurance, so the cost for those with insurance would only be their copay.

## [Things to do this weekend](#)



Best,  
Yolanta

**Yolanta M. Kovalko**  
*Postdoctoral Affairs  
BU School of Medicine  
Division of Graduate Medical Sciences*

72 East Concord Street, L-315, Boston, MA 02118 | [yolanta@bu.edu](mailto:yolanta@bu.edu) | T 617.638.5244 | F 617.638.5740