



State of the Section – 2007

General Internal Medicine

Jeffrey H. Samet, MD, MA, MPH

Chief, Section of General Internal Medicine

Department of Medicine

Boston University School of Medicine and
Boston Medical Center

Future Site of the Section of General Internal Medicine



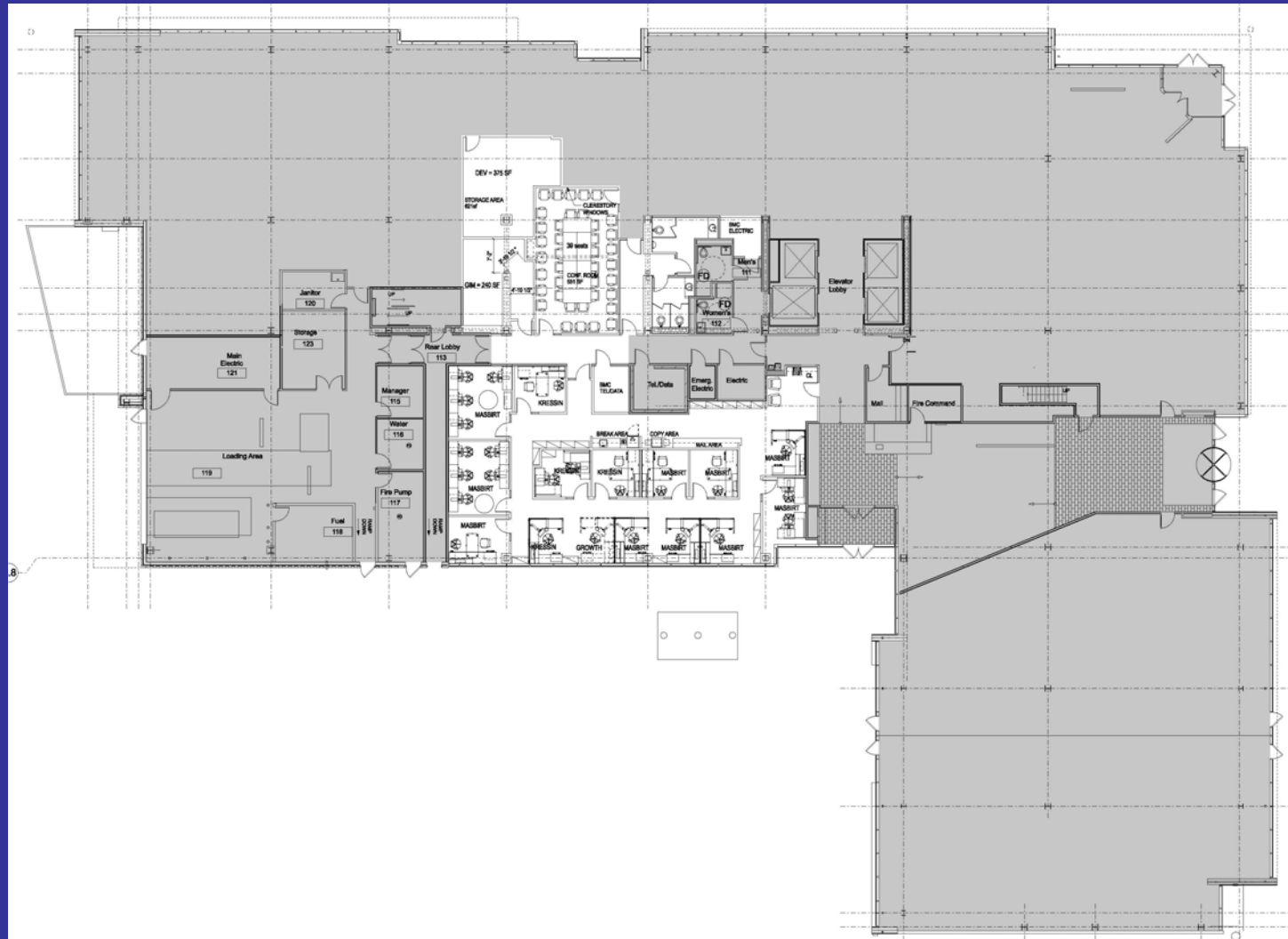
Crosstown Office Building
Corner of Mass Ave and Albany St



Crosstown building, 2nd Floor – GIM



Crosstown building, 1st Floor – GIM



Overview

Section of General Internal Medicine

- People
 - Programs
 - Events
 - Accomplishments
-

People



General Internal Medicine 2007



Administration

- Debra Paarz – Administrator
 - Nerveene Browne – Office Manager (MAT 2)
 - Ann Farrell – WHU Research Admin Manger (DOB 11)
 - Veronica Forde – GIM Fellowship Coordinator
 - Sarah Ma – Grants Manager
 - Lisa Morin – Executive Assistant
 - Jenay Nasif – Office Manager (YACC-5)
 - ❖ Efficient, helpful, stable — no change since 2005
-

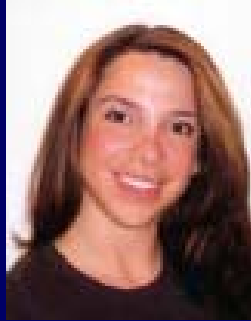
New Faculty '06-'07

- 1 Clinician Investigator
 - 6 Clinician Educators – Primary Care
 - 4 Physician Assistants/Nurse Practitioners
-

New Faculty (‘06 – ‘07)



- Andrea Kronman, MD, MSc (Clinician Investigator)
 - Medical School: Univ of Massachusetts
 - Residency: UMass Medical Center
 - Fellowship: GIM, BUSM



- Carol Bravo, MD (Clinician Educator – Yawkey)
 - Medical School: St. George's University
 - Residency: University of Miami, Jackson Memorial Hospital



- Nicolette Fontaine, MD (Clinician Educator – QMC & Yawkey)
 - Medical School: Univ of Massachusetts
 - Residency: UMass Medical Center

New Faculty (‘06 – ‘07)



- Elizabeth Rourke, MD (Clinician Educator – South Boston PC)
 - Medical School: Univ of Massachusetts
 - Residency: BUSM



- Alexandra Molnar, MD (Clinician Educator – Upham’s Corner PC)
 - Medical School: Univ of Washington School of Medicine, Seattle
 - Residency: Brigham and Women’s Hospital
-

New Faculty (‘06 – ‘07)



- Leila Obeid, MD (Clinician Educator)
 - Medical School: LSU
 - Residency: LSU



- Peggy Chou, MD (Clinician Educator)
 - Medical School: Cornell University
 - Residency: New York Hospital, Cornell Univ.
-

New Faculty (‘06 – ‘07)

- Tonya Biffle, PA-C
 - Joyce Panganamala, PA-C
 - Sarah Parks, PA-C
 - Amy Thomas, NP
-

Faculty Recruits ('07-'08)

- 7 Clinician Educators – Primary Care
 - 12 Clinician Educators – Hospitalists
 - 2 Clinician Investigators
-

Faculty Recruits ('07-'08)



- Raj Krishnamurthy, MD (DOM – Medical Director)
 - Medical School: BUSM
 - Residency: BUSM

- Claudia Nader, MD (Clinician Educator YACC & ID)
 - Medical School: Lebanese University
 - Residency: Saint Raphael Hospital

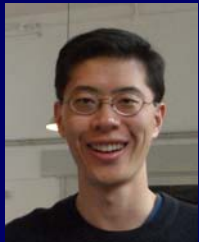


- Peter Grinspoon, MD (Clinician Educator – DOB)
 - Medical School: BUSM
 - Residency: Brigham and Women's Hospital

Faculty Recruits ('07-'08)



- Craig Noronha, MD (Clinician Educator – YACC)
 - Medical School: BUSM
 - Residency: BUSM



- Daniel Chen, MD (Clinician Educator– DOB)
 - Medical School: University of Pennsylvania
 - Residency: Hospital of the Univ of Pennsylvania
 - Fellowship: BUSM GIM



- Lars Reinhold, MD (Clinician Educator, S. Boston)
 - Medical School: BUSM
 - Residency: BUSM
-

Faculty Recruits ('07-'08)



- Peter Smith, MD (Clinician Educator—E. Boston NHC)
 - Medical School & Residency: BUSM
 - Fellowship: BUSM GIM



- Alok Kapoor, MD (Clinician Investigator)
 - Medical School: Albert Einstein College
 - Residency: NYU
 - Fellowship: BUSM GIM



- Alexander Walley, MD (Clinician Investigator)
 - Medical School: Johns Hopkins
 - Residency: UC San Francisco
 - Fellowship: BUSM GIM

Faculty Recruits ('07-'08)

- Sandhya Rao, MD (Hospitalist)
 - Medical School: St. Georges University
 - Residency: Jamaica Hospital Medical Center, NY



- Versha Taparia, MD (Hospitalist – Firm H)
 - Medical School: Northwestern University
 - Residency: BUSM

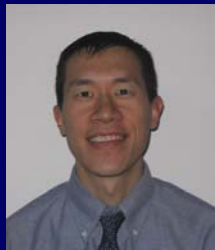


- Robert Chehade, MD (Hospitalist – Firm H)
 - Medical School: Univ of Massachusetts
 - Residency: BUSM
-

Faculty Recruits ('07-'08)



- Charlene Weigel, MD (Hospitalist)
 - Medical School: University of Rochester
 - Residency: Univ of Virginia Health System



- Henri Lee, MD (Hospitalist)
 - Medical School: New York University
 - Residency: Columbia-Presbyterian Medical Center



- Karen Patterson, MD (Hospitalist – Nocturnist)
 - Medical School: University of Rochester
 - Residency: BUSM
-

Faculty Recruits ('07-'08)



- Thomas Tadros, MD (Hospitalist – Nocturnist)
 - Medical School: Univ of Massachusetts
 - Residency: BUSM



- Susan Kim, MD (Hospitalist – Nocturnist)
 - Medical School: Temple University
 - Residency: BUSM



- Christopher Avery, MD (Hospitalist – Nocturnist)
 - Medical School: College of Osteopathic Med/Surg & Health Science
 - Residency: UMass Medical Center
-

Faculty Recruits ('07-'08)

- Daniela Winston, MD (Hospitalist)
 - Medical School: University of Medicine and Pharmacology, Romania
 - Residency: UMass Medical Center
 - Sanny Biswas, MD (Hospitalist)
 - Medical School: Univ. of Tennessee
 - Residency: BUSM
 - Andres Solorza, MD (Hospitalist)
 - Medical School: Universidad del Cauca School of Medicine, Colombia
 - Residency: Mount Sinai School of Medicine, NJ
-

Departing Faculty

- David Battinelli, MD
 - Carol Bravo, MD
 - Adriana Cervantes, MD
 - Benson Chu, MD
 - Jeong Min Lee, MD
 - Alexandra Molnar, MD
 - Eleanor Paglia, MD
 - Margaret Seaver, MD
 - Bernardo Selim, MD
-

GIM Units and Directors

- Clinical Addiction Research & Education (CARE) Unit
 - Rich Saitz, MD, MPH
 - Women's Health Unit (WHU)
 - Karen Freund, MD, MPH
 - Medical Information Systems Unit (MISU)
 - Robert Friedman, MD
 - Health Care Research Unit (HCRU)
 - Arlene Ash, PhD
 - Hospital Medicine Unit (HMU)
 - Jeffrey Greenwald, MD
 - Community Medicine Unit (CMU)
 - Christopher Shanahan, MD, MPH
-

GIM Primary Care Leadership

- Peter Davidson, MD
 - Associate Chief
 - Jason Worcester, MD
 - Director, Yawkey Primary Care Clinic
 - Peggy Chou, MD
 - Director, Doctor's Office Building (DOB) Primary Care Clinic
 - Elizabeth Dupuis, MD
 - Director, Women's Health Group
 - Director, Primary Care Clinic, QMC
 - Steven Abreu, MD
 - Director, Primary Care Clinic, Commonwealth Medical Group (CMG)
-

Internal Medicine Pre-operative Assessment Center (IMPAC)

- Reorganized GIM pre-operative medicine service
 - Director: David Halle, MD
 - Faculty: Nila Radhakrishnan, MD
 - Staff: Amy Thomas, NP
-

Clinic Staff Leadership

YACC 3 Primary Care Practice

- Verlaine Polynice-Volcy, RN, Practice and Nurse Manager
- Brenda Smith, Team Coordinator
- David Bernard, Team Coordinator
- Colleen LaBelle, RN, Nurse Manager (OBOT)

DOB Primary Care Practices

- Jennifer Furlonge, Practice Manager (DOB 5 & WHG)
 - Lise Devescovi, Practice Manager (CMG and QMC)
 - Natasha Julks, Team Coordinator (DOB 5)
 - Regina Chin, RN, Nurse Manager (DOB 5)
-

Clinic Nurse Practitioners & Physician Assistants

- Susan Morrissey, NP (YACC)
 - Eunice MacAllister, NP (WHG DOB4)
 - Amy Thomas, NP (IMPAC, DOB 7)
 - Sarah Parks, PA-C (YACC)
 - Joyce Panganamala, PA-C (YACC)
 - Tonya Biffle, PA-C (DOB-5)
-

BUSM Deans From GIM

- Phyllis Carr, MD
 - Associate Dean for Student Affairs
 - Bob Witzburg, MD
 - Associate Dean for Admissions
 - Suzanne Sarfaty, MD
 - Assistant Dean for Student Affairs
-



Programs

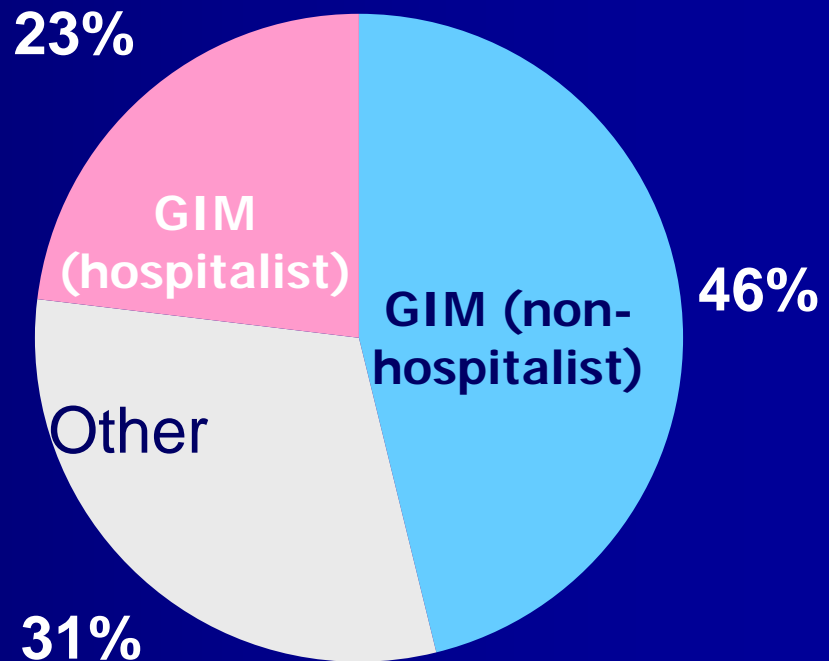


Primary Care

- Yawkey (BMC-YACC)
 - Doctor's Office Building (BMC-DOB)
 - Women's Health Group (BMC-WHG)
 - Commonwealth Medical Group (CMG)
 - Quincy Medical Center (QMC)
 - Neighborhood Health Centers (NHC)
-

GIM Attending Coverage at BMC

- 69% of inpatient medicine blocks are covered by GIM*



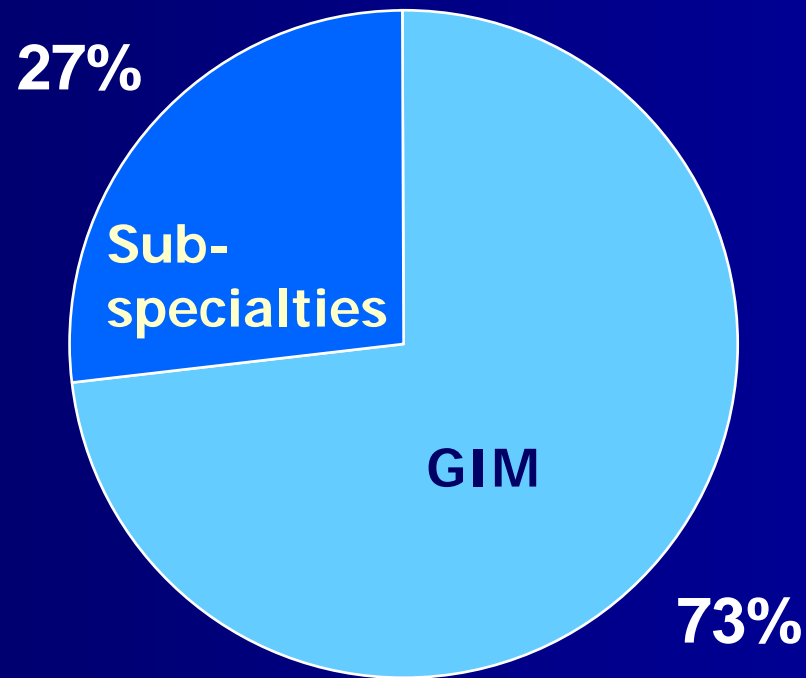
*not including ICU, CCU, Geriatrics, Family Medicine & Oncology Services

GIM Clinic Attending

Primary care clinic sessions at BMC in
which BUSM students are precepted

Academic Year	# Clinic Sessions	% Change (prior year)
2002 – 2003	700	--
2003 – 2004	750	+7
2004 – 2005	640	-14
2005 – 2006	482	-25
2006 – 2007	399	-13

BUSM Precepting – Ambulatory DOM Clinical Sessions



ICM* Teaching

- Warren Hershman, MD, MPH
- Jason Worcester, MD
- Daniel Chen, MD†
- Katherine Johnston, MD†
- Alok Kapoor, MD†
- Adam Rose, MD†
- Alex Walley, MD†

* Introduction to Clinical Medicine

† GIM Fellow

EBM* Teaching

- Daniel Chen, MD[†]
- Julien Dedier, MD, MPH
- Warren Hershman, MD, MPH
- Theresa Kim, MD
- Beth Manning, MD

*Evidence Based Medicine

† GIM Fellow

Ambulatory Student Report

- Kathleen Crowley, MD, MPH
 - Leyda Delgado, MD, MPH
 - Bernie Kreger, MD, MPH
 - Renee McKinney, MD
 - Dan Newman, MD
 - Christine Phillips, MD
 - Susan Phillips, MD
 - Jason Worcester, MD
 - Laura Wung, MD
-

Community Medicine Unit

Faculty Outpatient and Inpatient Attendings

- Julie Crosson, MD
(Dorchester House NHC)
 - Jessie Gaeta, MD
(McInnis Group)
 - Vasken Kroshian, MD
(Codman Square NHC)
 - Unique Michaud, MD
(Codman Square NHC)
 - Julita Mir, MD (Dorchester House, NHC)
 - Geoffrey Modest, MD
(Upham's Corner NHC)
 - Alexandra Molnar, MD
(Upham's Corner NHC)
 - Jonathan Pincus, MD
(Codman Square NHC)
 - Vicki Rieder, MD
(E. Boston NHC)
 - Elizabeth Rourke, MD
(South Boston, CHC)
 - Bernardo Selim, MD
(E. Boston NHC)
 - Steven Simon, MD
(E. Boston NHC)
 - Dan Simpson, MD
(South End NHC)
-

DOM Ambulatory Morning Report Attendings

- Alford
 - Battinelli
 - Caslowitz
 - Davidson
 - Halle
 - Hylek
 - Jackson
 - Manning
 - McKinney
 - Samet
 - Viner
 - Witzburg
-

Department of Medicine

Internal Medicine Residency

Program Directors from GIM

- David Battinelli, MD, Program Director, Vice Chair for Education
 - Angela Jackson, MD, Associate Program Director; Director, Primary Care Program
 - David Halle, MD, Associate Program Director
 - Joel Caslowitz, MD, Associate Program Director
 - Beth Manning, MD, MPH, Assistant Program Director; Director, Preliminary Program
-

Medical Student Admission Committee

- Robert Witzburg, MD, Associate Dean
 - Susan Phillips, MD
 - Nila Radhakrishnan, MD
 - Richard Kalish, MD
-

GIM Presence at Other BUMC Clinical Sites

- ID Clinic
 - Sondra Crosby, MD
 - Health Care for the Homeless
 - Colleen LaBelle, RN
 - TB Clinic
 - Brant Viner, MD
 - International Clinic
 - Brant Viner, MD
 - Sondra Crosby, MD
 - Susan Phillips, MD
 - Rheumatology
 - Beth Manning, MD
 - Anticoagulation & Thrombosis Service, Clinical & Research Programs
 - Elaine Hylek, MD, MPH
-

GIM Presence at Other BUMC Clinical Sites

- McInnis Group/Woods Mullen Shelter
 - Theresa Kim, MD
 - CAB Detoxification Unit
 - Theresa Kim, MD
 - BPHC Narcotic Addiction Clinic
 - Dan Alford, MD, MPH
 - Sheila Chapman, MD
 - Sandra Gordon, MD
 - Transitional Opioid Program (TOP)
 - Donna Beers, RN
 - Christopher Shanahan, MD, MPH
-

GIM Presence at Other Clinical Sites

- Mattapan CHC
 - Chris Shanahan, MD
 - Dimock CHC
 - Alex Walley, MD
 - Senior Whole Health and Upham's Corner NHC
 - Kathy Bennett, MD
 - Care Alternatives
 - Jennifer Hughes, MD
 - McInnis House
 - Monica Bharel, MD
-

GIM Presence at Other BUMC Clinical Sites

- Belkin Breast Health Center (Moakley)
 - Tracy Battaglia, MD, MPH
 - Chava Chapman, MD
 - Michele David, MD, MPH
 - Elizabeth Dupuis, MD
 - Renee McKinney, MD
 - Karen Freund, MD, MPH

GIM Presence at BMC/BUMC

- Angela Jackson, MD, Chair, BMC Core Competency Committee
 - Bob Witzburg, MD, Chair, Credentialing Committee
 - Tracy Battaglia, MD, MPH, Chair, Quality Improvement, Cancer Care Committee
 - Rich Saitz, MD, MPH, Associate Director, Office of Clinical Research
 - Richard Kalish, MD, Boston HealthNet Medical Director; Boston Medical Center HealthNet Plan Medical Director
-

GIM Presence at BMC Information Technology

- Christopher Shanahan, MD, MPH, Medical Director
 - Daniel Newman, MD, Senior Consultant of IT Development
 - Jerry Sobieraj, MD, Senior Clinical Analyst, Enterprise Analytics Group
 - Linda Rosen, MS, Clinical Data Warehouse Research Manager, Office of Clinical Research
 - Elizabeth Dupuis, MD, Chair, Clinical IT Steering Committee
-

GIM Presence at Mass. Dept. of Public Health (MDPH) and Boston Public Health Commission (BPHC)

- Michele David, MD, Member, Massachusetts Public Health Council
 - Nancy Norman, MD, MPH, Medical Director, BPHC
 - Jeffrey Samet, MD, MA, MPH, Medical Director, BPHC, Substance Abuse Prevention and Treatment Services
-

GIM Presence at Quincy Medical Center

- Tom Barber, MD, Chief of Medicine
 - Elizabeth Dupuis, MD
 - Nicolette Fontaine, MD
 - Leyda Delgado, MD
 - Brian Dalton, MD
-

GIM Inpatient Safety Net 2006-2007

- Steve Abreu, MD
 - Dan Alford, MD, MPH
 - David Halle, MD
 - Joanne Murabito, MD
 - Subha Ramani, MD, MPH, MMEd
 - Michael Paasche-Orlow, MD
 - Warren Hershman, MD
-

Innovations in Primary Care

- Smoking cessation/behavioral medicine
 - Diabetes group appointments
 - Alzheimer's Association liaison
 - Chronic disease management for addiction
 - Screening for alcohol and drugs via MASBIRT
 - Patient Navigator—Breast Health
-

GIM Conferences

- Grand Rounds*
 - Ambulatory Medicine Focus
 - Organized by Bernie Kreger, MD
 - Ambulatory Morbidity and Mortality Conference
 - Beth Manning, MD, MPH
 - Christine Phillips, MD
- Research in Progress (RIP)[†]
 - Organized by Michael Paasche-Orlow, MD
- MISU Conference[‡]
 - Organized by Julien Dedier, MD
- Advocacy, Public Policy and Women's Health Series[§]
 - Course Director, Michele David, MD

* weekly

†biweekly

‡monthly

§ quarterly

Boston University School of Medicine
Department of Medicine
Medical Grand Rounds by GIM Faculty
2006-2007

- Elaine Hylek, MD, MPH
 - Atrial Fibrillation and Stroke Prevention-Evolving Science and Continuing Challenges

 - David Battinelli, MD and Ravin Davidoff, MD
 - CPS Case: 63 YO Woman from Africa with Severe Hypertension and a Heart Murmur

 - David Battinelli, MD and Lewis Weintraub, MD
 - CPS Case: 60 YO Man with an Acute Change in Vision
-

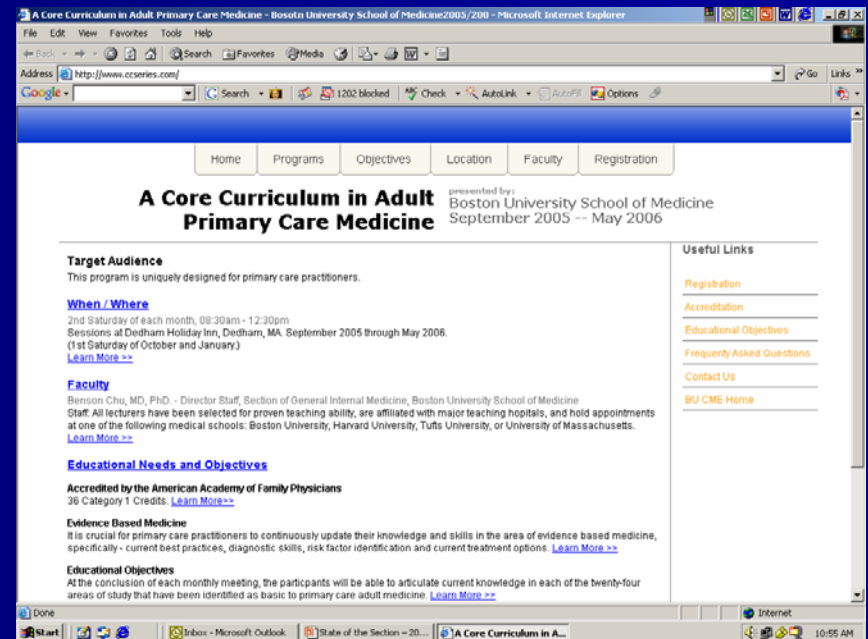
Core Curriculum in Adult Primary Care Medicine

- Ben Chu, MD, PhD, Director and Beth Manning, MD, Co-Director

- Programs:

- Diabetes
- Neurology
- Hematology
- Risk Management
- Endocrinology
- Infectious Disease
- Cardiology
- Pulmonary
- General Internal Medicine

- Monthly Saturday morning CME course in Dedham, MA with 184 participants



GIM/Family Medicine Fellowship Preventive Medicine Residency Programs

- Fellowship & Residency Leadership
 - Rob Friedman, MD – Director, Fellowship
 - Jane Liebschutz, MD, MPH – Associate Director, Fellowship; Director, PM Residency
 - Jay Orlander, MD, MPH – Associate Director, Fellowship
 - Michael Paasche-Orlow, MD, MPH – Assistant Director, Fellowship
 - Tracy Battaglia, MD, MPH – Assistant Director, PM Residency
-

GIM Fellowship 2007 Graduates



- Alex Walley, MD, MSc – BUSM/BMC



- Dan Chen, MD – BUSM/BMC



- Peter Smith, MD – East Boston, NHC



- Nameeta Dookeran, MD – Brigham & Women's



- Alok Kapoor, MD – BUSM/BMC
-

GIM Fellowship/Preventive Medicine Residency Programs: '07 Recruits

- Jonathan Berz, MD
 - Medical School: Tufts University
 - Residency: BMC
 - Teresa Cheng, MD
 - Medical School: SUNY at Stony Brook
 - Residency: Boston City Hospital
 - Ellen (Cowen) Meltzer, MD
 - Medical School: Jefferson Medical College, Philadelphia, PA
 - Residency: BMC
 - Diego Martinez-Vasquez, MD
 - Escuela Colombiana de Medicina, Colombia
 - Residency: Mount Auburn Hospital, Cambridge
-

Geriatric Center of Excellence Faculty Fellowship

- **2006-2007**
 - **Nila Radhakrishnan, MD**
 - **2005 – 2006**
 - Christine Phillips, MD
 - Jeffrey Greenwald, MD
 - **2004 – 2005**
 - Michael Paasche-Orlow, MD, MPH
 - **2003 – 2004**
 - Jennifer Hughes, MD
-

Hospital Medicine Unit

- Jeffrey Greenwald, MD, Director
 - Faculty: Dedier; Huang; Hughes; Radhakrishnan; Ramani; Biswas; Winston; Solorza; Moondra; Tignor; McCahan
 - Physician Assistants: Elizabeth Gemba, PA-C; Rebecca Holberg, PA-C; Stephanie Williams, PA-C
-
- | | |
|---------------------------------------------------------|-------------------------------------------|
| ▪Medication reconciliation | ▪Palliative care team creation |
| ▪Handoff communication improvements | ▪Project RED: Re-Engineering Discharge |
| ▪Inpatient influenza vaccination | ▪Laboratory quality improvement |
| ▪Faculty development on inpatient teaching and feedback | ▪Development of the new uncovered service |
-

Medical Information Systems Unit

- Robert Friedman, MD, Director
 - Faculty: Ramesh Farzanfar, PhD; Julie Wright, PhD; Julien Dedier, MD, MPH; Amy Rubin, PhD
 - Performs research and provides education and training in medical informatics (computer applications in medicine and public health)
 - Automated programs in primary prevention by reducing behavioral risk factors for diseases (smoking, alcohol, diet, physical activity)
 - Automated programs for patients with chronic disease that support their optimal self-care, monitor disease, and notify responsible clinicians about clinically significant problems
-

Health Care Research Unit

- Faculty: Arlene Ash, PhD, Director; Amresh Hanchate, PhD; Andrea Kronman MD, MPH
 - Focus on large databases, health services research, such as:
 - TRICARE (DoD):
 - Identifying apparently inappropriate variations in care
 - Medicare:
 - Does income affect access to life-enhancing surgery?
 - Do primary care visits help reduce hospital days?
 - Collaboration with many projects, such as:
 - NIA's Long-Life Family Study (Perls)
 - Longitudinal Study of Older Breast Cancer Survivors (Silliman)
 - Patient Navigator (Freund & Battaglia)
 - National Initiative To Advance Women And Minority Faculty In Academic Medicine (Pololi & Carr)
-

Women's Health Unit

A National Center of Excellence in Women's Health (DHHS)

- 2 sites: Women's Health Group (DOB) & Breast Health Group (Moakley)
 - Pap Smear Tracking (Dupuis)
 - Screening Mammography Tracking (Battaglia, Phillips)
 - Radiology Critical Alerts (Dupuis)
 - HEDIS measures (Sobieraj, WHU)
 - Avon Funding (Battaglia, Freund)
 - Patient Navigation in Moakley, 6 NHCs, Cancer clinical trials
 - WHN – cancer screening outreach (Chapman)
-

Women's Health Unit Research



Community Medicine Unit

- Credentialing of GIM providers
 - Enhancing the Department of Medicine's relationship with Community Medicine faculty
 - Oversight of BMC Joint Hire Program
 - Developing New Collaborative Hiring Models
 - Collaborating with Residency Program to promote Primary Care
 - Working with Mass-ACP to promote Internal Medicine through Grassroots Organizing Initiative
 - Career Counseling (Med Stud, HOs, & Fellows)
-

Clinical Addiction Research and Education Unit

- Office Based Opioid Treatment (OBOT)
 - Methadone maintenance
 - Transitional Opioid Program (TOP)
 - Addiction Chronic Disease Management RCT (AHEAD)
 - Youth Alcohol Prevention Center – collaboration with BUSPH
 - Effects of alcohol across lifetime – collaboration with Framingham Study
 - Electronic approaches to alcohol problems – collaboration with MISU and BU psychology
 - HIV prevention in substance abusers – collaboration with St. Petersburg State Pavlov Medical University, Russia
 - HIV, Hepatitis C & Alcohol Longitudinal Cohort
 - Prescription drug abuse and interpersonal trauma
 - Quality of addiction care (IOM, Washington Circle)
 - MD addiction education (NIAAA & NIDA R-25: CRIT & ACT)
 - Screening Brief Intervention and Referral to Treatment (MASBIRT)– collaboration with Massachusetts BSAS
-

Incentive Plans ('06 -'07)

- GIM RVU-based clinical incentive
 - A basis of future department-wide incentive program
- Citizenship acknowledgement
- Research enhancement by DOM & BMC

New Initiatives

- Recruitment of Director of Disparities Research
 - PC Advisory Committee
 - Academic month for PC Clinician Educators
-

Events



Mark Moskowitz Memorial Visiting Professor

Friday, March 16, 2007



William Ghali, M.D., M.P.H., F.A.C.P.
Professor, University of Calgary

SGIM Grand Rounds

Curiosity and fun: Research into pre-release and fast-track
publication in leading medical journals

Medical Grand Rounds

The role of meta-analysis in the evolution of medical knowledge

Cross-cultural Primary Care: A Patient-based Approach



January 24, 2007

Joseph R. Betancourt, MD
Director, Disparities Solutions Center;
Director of Multicultural Education, MGH
Assistant Professor of Medicine, Harvard Medical School

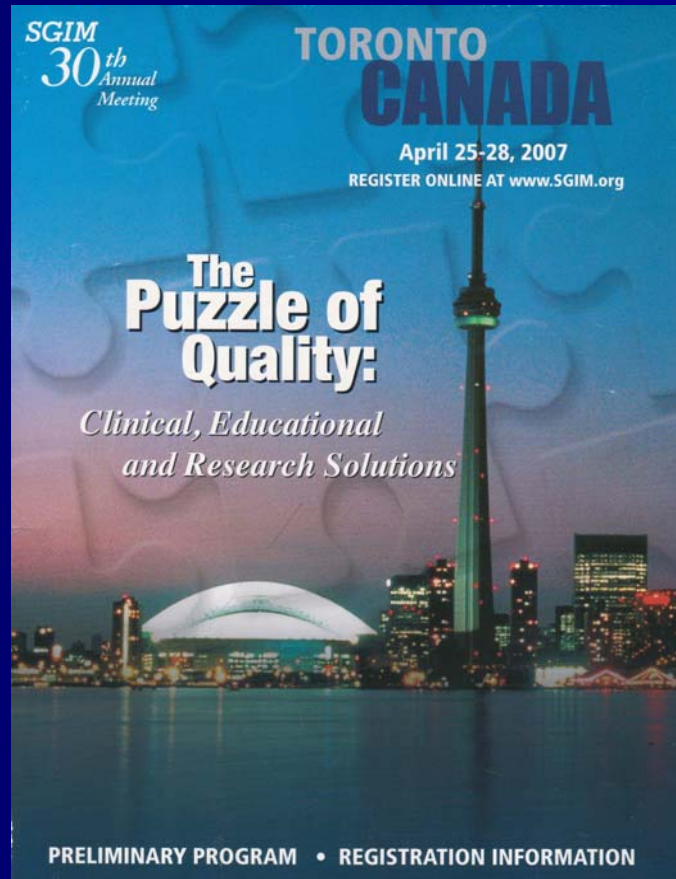
Society of General Internal Medicine (SGIM) New England Regional Meeting at BMC

- Meeting Co-Chair
 - Elaine Hylek, MD
- Regional President
 - Angela Jackson, MD
- 9 GIM Abstracts
 - Daniel Chen
 - Ellen Cowen
 - Khelda Jabbar
 - Angela Jackson
 - Kristen Lipstreuer



- Jennifer Mcall-Hosenfield
- Adam Rose
- Peter Smith
- Alex Walley

Society of General Internal Medicine (SGIM) National Meeting



FRIDAY, APRIL 27, 2007

[Interest Groups]

Title: Substance Abuse
Session Code: IF15
Time: 7:30AM - 8:30AM
Room: Conference Room D, Mezzanine Level
Coordinator: Richard Saitz

Title: Update in Pain Medicine
Session Code: CUD
Time: 10:30AM - 12:00PM
Coordinator: M Bax
Faculty: Daniel Alford, P Chelminski, Jane Liebschutz, C Nicolaidis

[Workshops]

Title: Initiation, Maintenance and Discontinuation of Opioids for Patients with Chronic Pain
Session Code: WF06
Time: 4:00PM - 5:30PM
Coordinator: Jane Liebschutz
Faculty: K Berg, C Nicolaidis, M Picchioni, L Yanni

[Oral Presentations]

Title: Improving Risk Adjustment for Illness Burden

Abstract Session D3: Clinical Epidemiology/Healthcare Effectiveness Research

Time: 10:30AM - 10:45AM
Room: Huron Room, Second Floor
Presenter: Andrea Kronman, Amresh Hanchate, John Speckman, Adlene Ash

Title: Delays in Follow-Up After Abnormal Cervical Cancer Screening Among Inner City Minority Women

Abstract Session E3: Health Disparities

Time: 2:00PM - 2:15PM
Room: Huron Room, Second Floor
Presenter: Kristen Lipstreu, SM Bak, MC Santana, S Pavel, SM Toingale, Karen Freund, Tracy Battaglia

Title: Changes in Readiness and Drinking in Primary Care Patients with Unhealthy Alcohol Use

Abstract Session F1: Chronic Care and Management/Healthcare Delivery

Time: 4:15PM - 4:30PM
Authors: Nicolas Bertholet, NJ Horton, Richard Saitz

[Poster Presentations]

Title: Strategies for Improving Provider-Patient Communication about Medication Adherence: Can Behavior Change be Effectuated? Does it Affect Patient Outcomes?

IPM Poster Session 1

Time: 2:00PM - 3:30PM
Room: Civic Ballroom South, Second floor
Authors: Nancy Kressin, MB Orner, Daniel Bedowitz

Title: Effect of the Re-Engineered Discharge Program on Self-Assessed Readiness for Discharge after Hospitalization for Patients with Limited Health Literacy

Abstract Poster Session 3

Time: 5:30PM - 7:00PM
Room: Sheraton Hall, Lower Concourse
Authors: Michael Pasche-Odom, VK Chetty, J O'Donnell, D Anthony, A Johnson, Jeffrey Greenwald, C Manasseh, G Brunick, K Casey, B Jack

Title: Validation of a Derived Indicator of Health Literacy

Abstract Poster Session 3

Time: 5:30PM - 7:00PM
Room: Sheraton Hall, Lower Concourse
Authors: Michael Pasche-Odom, Amresh Hanchate

Title: African Americans and Beliefs about Hypertension, Its Therapy, and Etiology: More Worries, Fewer Benefits, Less Control

Abstract Poster Session 3

Time: 5:30PM - 7:00PM
Room: Sheraton Hall, Lower Concourse
Authors: Nancy Kressin, MB Orner, Meredith Manze, M Gleckman, Peter Davidson, Ann Boczek, Daniel Bedowitz

Title: Stage of Colorectal Cancer Among Veterans with Mental Illnesses and Substance Abuse

Abstract Poster Session 3

Time: 5:30PM - 7:00PM
Room: Sheraton Hall, Lower Concourse
Authors: Arpita Aggarwal, Karen Freund, V Ramakrishnan, R Rosenheck

SATURDAY, APRIL 28, 2007

[Interest Groups]

Title: Physicians Against Violence
Session Code: IS07
Time: 7:30AM - 8:30AM
Coordinator: Jane Liebschutz



SECTION OF GENERAL INTERNAL MEDICINE BOSTON UNIVERSITY SCHOOL OF MEDICINE

Presentation Summary

30th Annual Meeting
Society of General Internal Medicine [Toronto]

ABOUT US

Begun in the late 1970's, the Section now has over 100 faculty members and an active General Internal Medicine Fellowship Program with a > 25 year history. Its urban outpatient clinical operation includes hospital and community based primary care clinics which see over 90,000 patient visits a year. GIM faculty both non-hospitalist and hospitalist perform the majority of inpatient attending on the Boston Medical Center non-ICU inpatient service. Residency programs, both traditional and Primary Care, are lead by GIM faculty. Direct research funding by GIM principal investigators tops \$9 million annually.

AREAS OF RESEARCH FOCUS

Addiction Medicine
Breast Health Care
Career Advancement for Women and Minorities
Cancer Prevention and Screening
Disparities in Health Care
Interpersonal Violence
Health Literacy, Bioethics
Health Services Methodology
HIV Prevention - Internationally
Homeless Health Care
Hypertension Therapy Adherence
Medical Informatics
Refugee Health
Stroke Prevention
Women's Health

Section of General Internal Medicine at Boston University Medical Center SGIM National Meeting Faculty/Fellows Attendees

Jeffrey Samet, MD - *Section Chief* • Daniel Alford, MD - *Clinical Addiction Research and Education Unit (C-ARE)* • Tracy Battaglia, MD - *Women's Health Group*
Nicolas Bertholet, MD - *GIM Fellow* • Daniel Chen, MD - *GIM Fellow* • Peggy Chon, MD - *FCC Clinic Director*
Michele David, MD - *Women's Health Group* • Peter Davidson - *Associate Chief of Clinical Affairs*
Julien Dedier, MD - *Medical Information Systems Unit (MSU)* • Nameeta Dookeran, MD - *Preventive Medicine - GIM Fellow*
Karen Freund, MD - *Chief, Women's Health Group* • Robert Friedman, MD - *Chief, MSU*
Allen Gifford, MD - *Associate Director, Bedford VA CHQOER* • David Halle, MD - *Director, Medical Consult Clinic*
Elaine Hyatt, MD - *Cardiovascular Research* • Khatida Jabbar, MD - *GIM Fellow*
Angela Jackson, MD - *Associate Director, Residency Training* • Katherine Johnston, MD - *GIM Fellow*
Theresa Kim, MD - *CARE Unit* • Nancy Kressin, PhD - *Disparities Research*
Andrea Kronman, MD - *Women's Health Group* • Jane Liebschutz, MD - *CARE Unit*
Kristen Lipstreu, MD - *GIM, Women's Health Fellow* • Jennifer McCall-Hosenfeld, MD - *GIM Fellow*
Jay Orlander, MD - *Associate Chief of Medicine, Boston VA Healthcare System* • Michael Pasche-Odom, MD - *Health Literacy Research*
Christine Phillips, MD - *Clinician Educator* • Adam Rose, MD - *GIM Fellow* • Richard Saitz, MD - *Chief, CARE Unit*
Peter Smith, MD - *Preventive Medicine, GIM Fellow* • Alexander Willey, MD - *GIM Fellow* • Jason Worcester, MD - *FCC Clinic Director*

SGIM National Meeting 2007



SGIM National Meeting 2007



3rd Annual Women's Health Reception in Toronto, SGIM



SGIM National Meeting

34 GIM Presenters

- Arpita Aggarwal
 - Arlene Ash
 - Tracy Battaglia
 - Daniel Berlowitz
 - Nicolas Bertholet
 - Ann Borzecki
 - Adriana Cervantes
 - Sheila Chapman
 - Debbie Cheng
 - Julie Crosson
 - Michele David
 - Peter Davidson
 - Nameeta Dookeran
 - Karen Freund
 - Allen Gifford
 - Sandra Gordon
 - Jeffrey Greenwald
 - Amresh Hanchate
 - Khelda Jabbar
 - Theresa Kim
 - Nancy Kressin
 - Andrea Kronman
 - Jane Liebschutz
 - Kristen Lipstreuer
 - Jennifer McCall-Hosenfeld
 - Carol Mostow
 - Michael Paasche-Orlow
 - Adam Rose
 - Richard Saitz
 - Jeffrey Samet
 - Margaret Seaver
 - Peter Smith
 - Rob Sokolove
 - Alex Walley
-

BMC Gala 2007

GIM and CMU – Community Donor Sponsors



Saturday June 9, 2007 at the Seaport World Trade Center

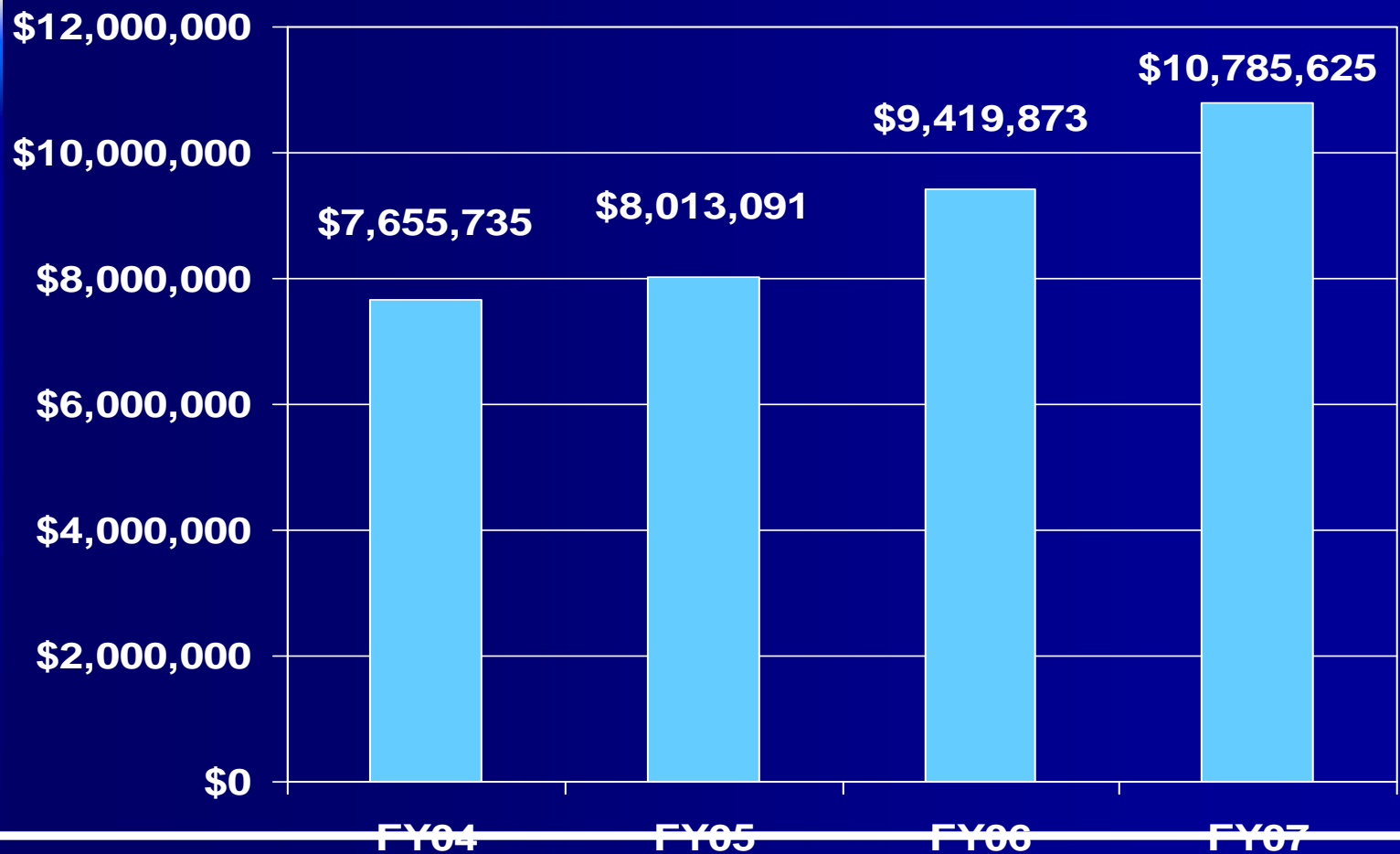
Family Winter Festival February 2007



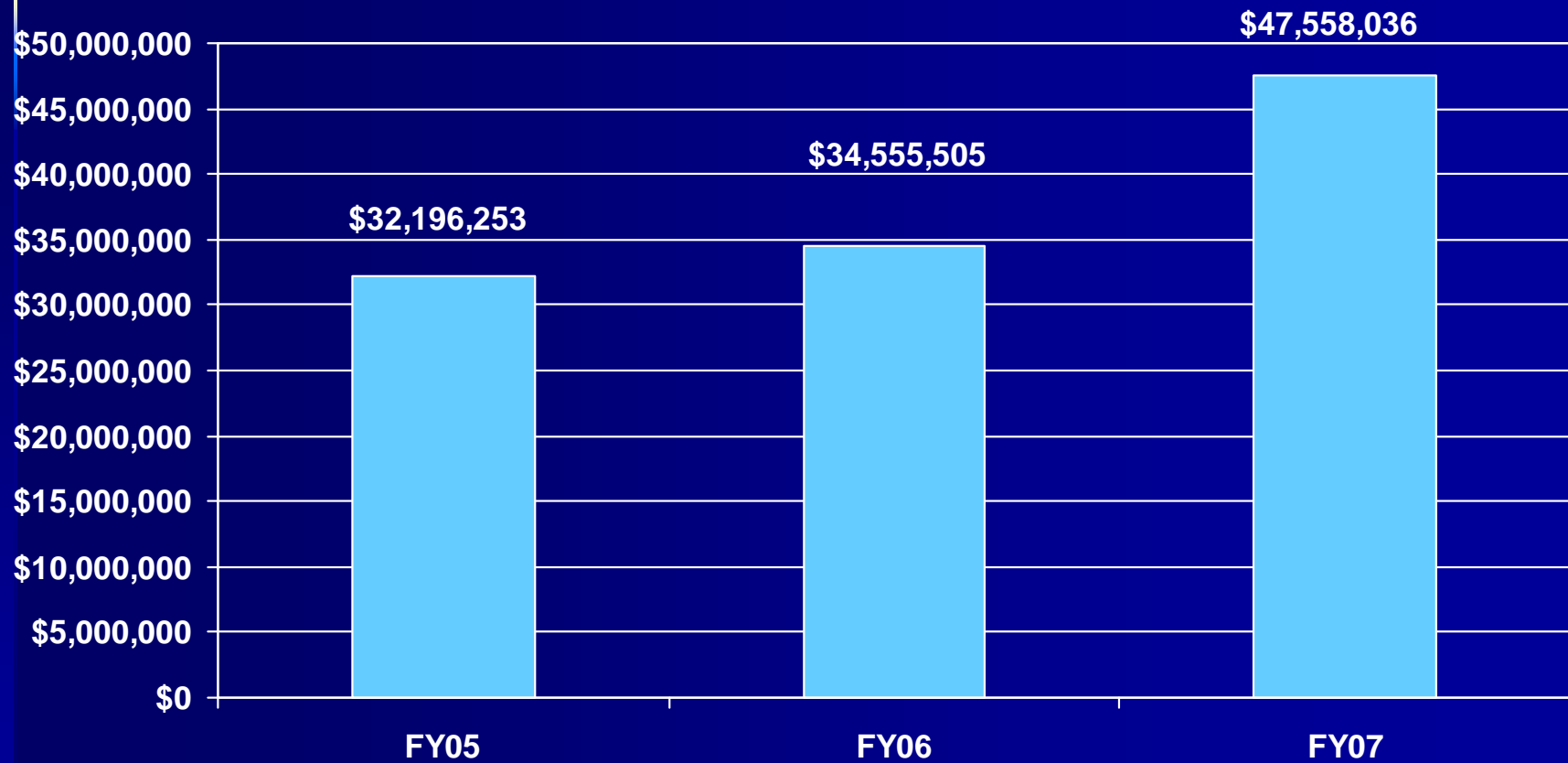
Endicott Estate, Dedham

Accomplishments

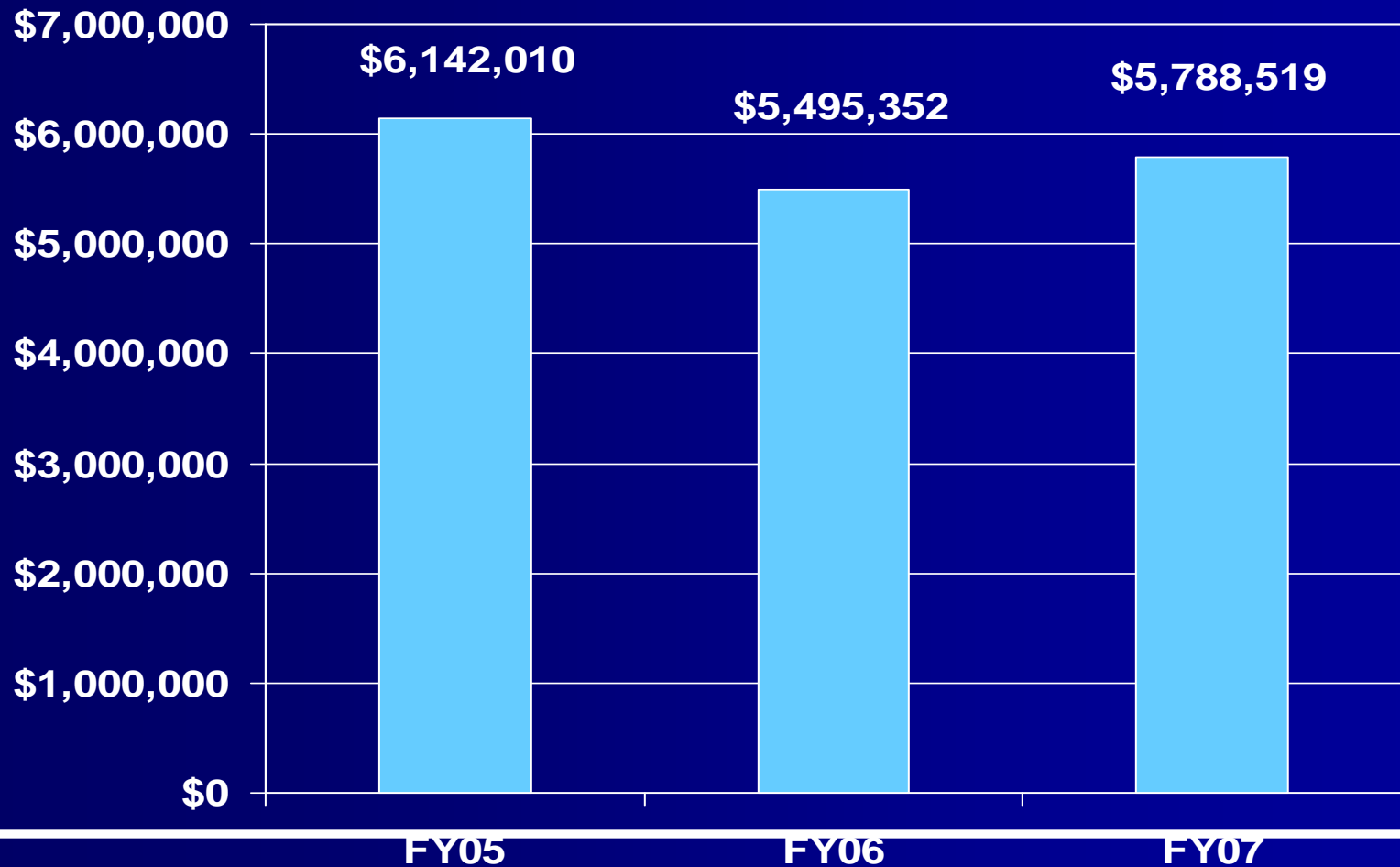
Current Annual Direct Research and Training Grant Awards



Total GIM Research Grant Awards



Total Fellowship & Training Grant Awards



GIM Clinician Educator Grant Support

- Dan Alford – OBOT Program, Boston Public Health Commission (BPHC)
 - Chava Chapman – Avon Breast Initiative
 - Sheila Chapman – AHEAD Study, NIH
 - Sondra Crosby – Resettlement Project, Psychiatry, Massachusetts Department of Public Health (Mass DPH)
 - Peter Davidson – Diabetes Initiative, Quality Grants Program, Harvard Pilgrim Health Care (HPHC)
 - Leyda Delgado – Disparities in Care of Older Patients, Tufts School of Medicine, NIH
-

GIM Clinician Educator Grant Support

- Elizabeth Dupuis – Smoking Cessation, NIH
 - Jeffrey Greenwald – Project Trust, Rehospitalization Study
 - Bernie Kreger – Framingham Heart Study, NIH
 - Renee McKinney, MD – Smoking and Depression, NIH
 - Joanne Murabito – Framingham Heart Study, NIH
 - Dan Newman – Diabetes Initiative, HPHC
-

New Research & Program Grants Awarded CARE Unit Principal Investigators (PIs)

- Alford:
 - SAMHSA; MASBIRT; \$9,895,575; 9/06-8/11

 - Samet:
 - NIDA, NIH; Clinical Addiction Research and Education (CARE) Program (R25DA013582); \$1,692,965; 5/06-4/11
 - NIAAA, NIH; HIV Prevention in Russian Drinkers (R01AA016059); \$3,183,861
-

New Research Grants Awarded WHU PIs

- Freund:
 - Avon Foundation; Breast Health Initiative; \$650,000; 4/07-3/09
 - Battaglia:
 - Avon Foundation; Measuring What Navigators Do; \$500,000; 2/07-1/09
 - David:
 - UCSF/Johnson & Johnson; Excellence in Women's Health; \$200,000; 7/06-6/09
 - Columbia U. (SOROS); Disparities Action Network; \$180,919; 7/06-6/08
-

New Research Grants Awarded MISU PIs

- Wright:
 - NCI; Pediatric Behavioral Informatics to Prevent Cancer (K07 CA113643-01A1); \$654,115; 9/1/06-8/31/11

Grants Submitted

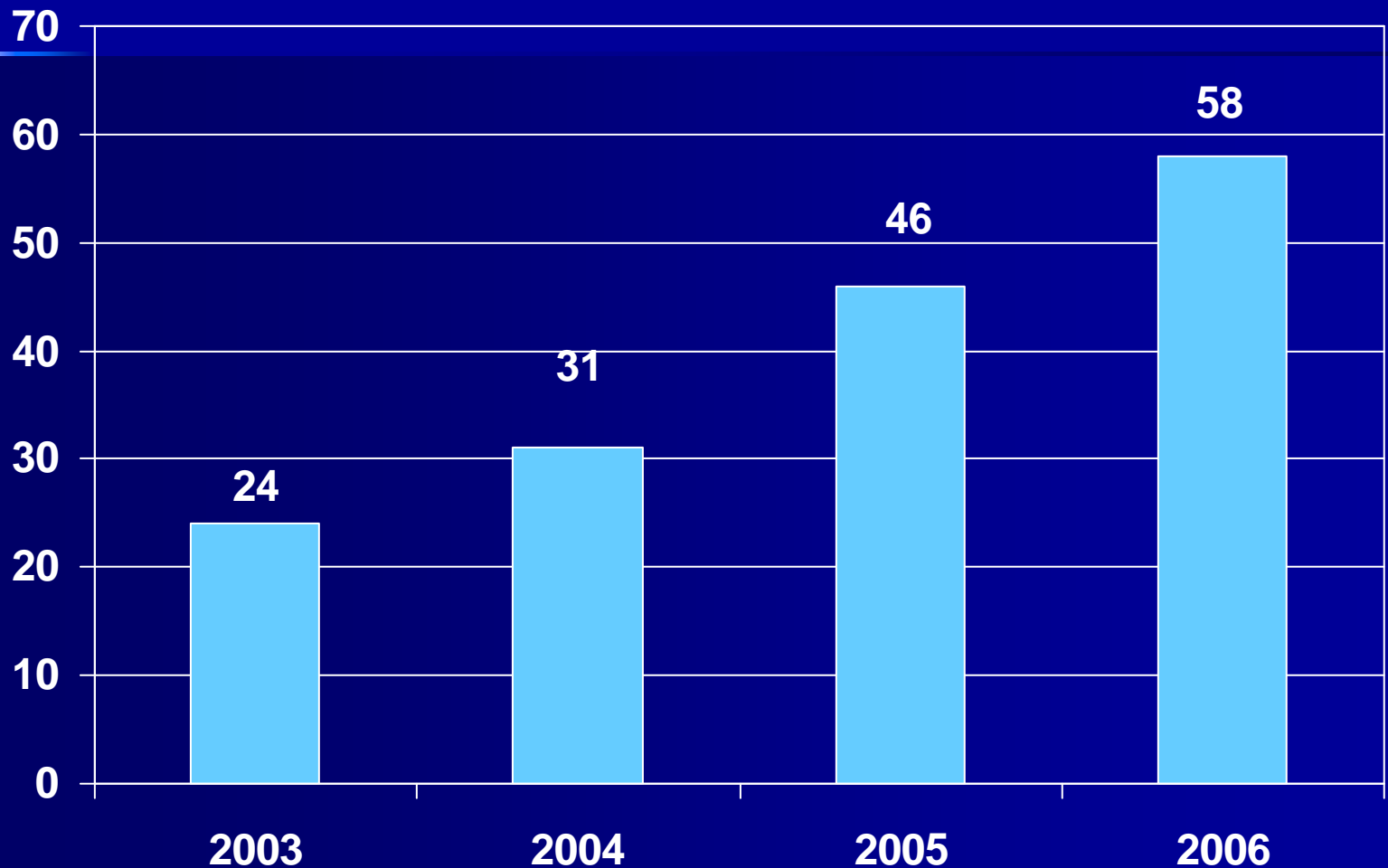
- Total support of pending grants with GIM faculty as PI: \$22,610,910

Career Development Awards

- Nancy Kressin, PhD:
 - VA Research Career Scientist Award (RCS 02-066-1); 1/1/07 – 12/31/11

 - Jeffrey Samet, MD, MA, MPH:
 - NIAAA, NIH; Impact of Alcohol Use on HIV-infection in the U.S. and Russia (K24AA015674); \$755,627; 9/06-8/11
-

54 GIM Publications



Publications – 2006

1. **Alford DP**, Compton P, **Samet JH**. Acute pain management for patients maintenance methadone or buprenorphine therapy. *Ann Intern Med* 2006;144:127-134.
 2. Amodeo M, Ellis M, **Samet JH**. Introducing evidence-based practices into substance abuse treatment using organization development methods. *Am J Drug Alc Abuse*. 2006;32:555-561.
 3. **Battaglia TA**, **Ash A**, Prout MN, **Freund KM**. Cancer prevention trials and primary care physicians: Factors associated with recommending trial enrollment. *Cancer Detection and Prevention*. 2006;30:34-37
 4. Berman AH, **Farzanfar R**, Wiklund G, Stevens A, Kristiansson M, Carlbring P, Ludena K, **Friedman RH**. Can Acts of Violence Among Forensic Psychiatric Outpatients be Minimized Using Computer Telephony? Abstract. The 6th Annual Conference of the International Association of Forensic Mental Health Services, 2006. Amsterdam, Netherlands.
 5. Bokhour BG, **Berlowitz DR**, Long JA, **Kressin NR**. How do providers assess antihypertensive medication adherence in medical encounters? *J Gen Intern Med*. 2006;21:577-583.
-

Publications – 2006

6. **Carr PL**, Edelin KC. Increasing the number of medical students from under-represented minorities. *BMJ* 2006;332:(7544):740.
 7. **Chuang CH, Liebschutz, JM**, Horton NJ, **Samet JH**. Association of violence victimization with unsafe condom use in HIV-infected persons. *AIDS and Behavior*. 2006;10:201207.
 8. Cook RL, McGinnis KA, Kraemer KL, Gordon AJ, Conigliaro J, Maisto SA, Samet JH, Crystal S, Rimland D, Bryant KJ, Braithwaite RS, Justice AC. Intoxication before intercourse and risky sexual behavior in men with and without HIV infection. *Med Care*. 2006; 44:31-36.
 9. Crosby S, Norredam M, Paasche-Orlow MK, Piwowarczyk L, Heeren T, Grodin M. Prevalence of torture survivors among foreign-born patients presenting to an urban ambulatory care practice. *J Gen Intern Med*. 2006;21:764-768.
 10. Dickert N, Kass N, Paasche-Orlow MK, Taylor H. Exclusion particular information from consent forms. *Accountability in Res*. 12:1013.
 11. Fang MC, Go AS, Hylek EM, Chang Y, Henault LE, Jensvold NG, Singer DE. Age and the risk of warfarin-associated hemorrhage: The Anticoagulation and Risk Factors in Atrial Fibrillation (ATRIA) Study. *J Am Ger Soc* 2006; 54:1231-6.
-

Publications – 2006

12. **Farzanfar R.** When computers should remain computers: A qualitative look at the humanization of health care technology. *Health Informatics Journal*. 2006. 12(3):239-254.
 13. **Farzanfar R, Friedman R,** Sparrow D. Evaluation of an Automated Telephone System to Promote Physical Activity in COPD Patients. Abstract. *Annals of Behavioral Medicine*. Annual meeting Supplement. 2006. Volume 31: S053.
 14. Fowler FJ, Barry MJ, Walker-Corkery B, Caubet JF, Bates DW, **Lee JM,** Hauser A, McNaughton-Collins M. The impact of a suspicious prostate biopsy on patient's psychological, socio-behavioral, and medical care outcomes. *J Gen Intern Med*. 2006;21:715-721.
 15. Frayne SM, Parker VA, Christiansen CL, Loveland S, **Seaver MR,** Kazis LE, Skinner KM. Health status among 28,000 women veterans: The VA women's health program evaluation project. *J Gen Intern Med*. 2006;21:Suppl3:S40-46.
 16. **Friedman R,** Migneault J, **Farzanfar, R, Wright J.** Automated telephone technology to initiate and maintain behavior change and patient self-care. *Annals of Behavioral Medicine*. Annual meeting Supplement. 2006. Volume 31:S079.
-

Publications – 2006

17. Garcia DA, **Hylek EM**. Antithrombotic therapy in atrial fibrillation. In: Jacobs LG: Clinics in Geriatric Medicine: Thromboembolic disease and antithrombotic agents in the elderly. Philadelphia:W.B. Saunders Co.; 2006;22:155-166.
 18. Garcia DA, Regan S, Crowther M, **Hylek EM**. The risk of hemorrhage among patients with warfarin-associated coagulopathy. J Am Coll Cardiol 2006;47:804-8.
 19. **Greenwald JL**, Hall J, Skolnik PR. Approaching the CDC's Guidelines on the HIV Testing of Inpatients: Physician-Referral Versus Nonreferral-Based Testing. AIDS Patient Care & STDs 2006(20)5:1-7.
 20. **Greenwald JL**. Routine HIV testing in Hospitals: Another opportunity for Hospitalists to Improve Care. Journal of Hospital Medicine 2006;1(2):106-112.
 21. **Greenwald JL**, Burnstein GR, **Pincus J**, Branson B. A Rapid Review of Rapid HIV Antibody Tests. Infectious Disease Reports 2006;8:125-131.
-

Publications – 2006

22. **Greenwald JL, Rich CA**, Bessega S, Posner MA, Maeda JL, Skolnik PR. Evaluation of the Centers for Disease Control and Prevention's Recommendations Regarding Routine Testing for Human Immunodeficiency Virus by an Inpatient Service: Who are we missing? Mayo Clin Proc 2006;81(4):452-458.
 23. Guyatt G, Gutterman D, Baumann MH, Addrizzo-Harris D, **Hylek EM**, Phillips B, Raskob G, Zelman-Lewis S, Schunemann H. Grading strength of recommendations and quality of evidence in clinical guidelines. Report from an American College of Chest Physicians task force. Chest 2006;129:174-181.
 24. Jaggi R, Phil D, Guancial EA, Cooper Worobey C, **Henault LE**, Chang Y, Starr R, Tarbell NJ, **Hylek EM**. The "Gender Gap" in authorship of academic medical literature – a 35 –year perspective. N Engl J Med 2006, 355: 281-7.
 25. Kertesz S, Larson MJ, **Cheng DM**, Tucker JA, Winter M, Mullins A, **Saitz R, Samet JH**. Need and non-need factors associated with addiction treatment utilization in a cohort of homeless and housed urban poor. Med Care. 2006;44:225-233.
-

Publications – 2006

26. **Kim TW, Alford DP**, Malabanan A, Holick MF, **Samet JH**. Low bone density in patients receiving methadone maintenance treatment. *Drug Alc Depend*. 2006;85:258-262.
 27. **Hylek EM**. Translating the results of randomized trials into clinical practice: the challenge of warfarin candidacy among hospitalized elderly patients with atrial fibrillation [letter]. *Stroke* 2006;37:2868.
 28. **Hylek EM**, D'Antonio J, Evans-Molina C, Shea D, **Henault LE**, Regan S. Translating the results of randomized trials into clinical practice. The challenge of warfarin candidacy among hospitalized elderly patients with atrial fibrillations. *Stroke* 2006;37:1075-1080.
 29. **Kim TW**, Kertesz SG, Horton NJ, Tibbetts N, **Samet JH**. Episodic homeless and health care utilization in a prospective cohort of HIV-infected persons with alcohol problems. *BMC Health Serv Res*. 2006;6:1-10.
 30. Kripalani S, **Paasche-Orlow MK**, Parker RM, Saha S. Advancing the field of health literacy. *J Gen Intern Med*. 2006;21:804-805.
-

Publications – 2006

31. Krupitsky EM, Zvartau EE, Lioznov DA, Tsoy MV, Egorova VY, Belyaeva TV, Antonova TV, Brazhenko NA, Zagdyn ZM, Verbitskaya EV, Zorina Y, Karandashova GF, Slavina TY, Grinenko AY, **Samet JH**, Woody GE. Co-morbidity of infectious and addictive diseases in St. Petersburg and the Leningrad Region, Russia. *Eur Addict Res.* 2006;12:12-19.
 32. Libman H, **Saitz R**, Nunes D, **Cheng D**, Richardson JM, Vidaver J, Alperen JK, **Samet JH**. Hepatitis C infection is associated with more depressive symptoms in HIV-infected adults with a history of alcohol problems. *Am J Gastro.* 2006;101:1804-1810.
 33. **Liebschutz, JM**, Godwin OD, Finley EP, Cawse JM, Bharel M, **Orlander JD**. In the minority: black physicians in residency and their experiences. *J Nat'l Med Assoc.* 2006;98:1441-1448.
 34. Lincoln A, **Paasche-Orlow MK**, **Cheng DM**, Lloyd-Travaglini C, Caruso C, **Saitz R**, **Samet JH**. Impact of health literacy on depressive symptoms and mental health-related quality of life among adult with addiction. *J Gen Intern Med.* 2006;21:818-822.
-

Publications – 2006

- 35. **Migneault J, Farzanfar R Farzanfar R, Wright J, Friedman RH.** How to write health dialog for a talking computer. Journal of Biomedical Informatics 2006; 39(5): 468-481
 - 36. Nunes DP, **Saitz R**, Libman H, **Cheng DM**, Vidaver J, **Samet JH.** Barriers to treatment of Hepatitis C in HIV/HCV-coinfected adults with alcohol problems. Alc Clin Exp Res. 2006;30:1520-1526.
 - 37. **Paasche-Orlow MK, Cheng DM, Palepu A, Meli S, Faber V, Samet JH.** Health literacy, antiretroviral adherence, and HIV-RNA suppression: a longitudinal perspective. J Gen Internal Med. 2006;21:835-840.
 - 38. **Paasche-Orlow MK**, Schillinger D, Greene SM, Wagner EH. How health care systems can begin to address the challenge of limited literacy. J Gen Intern Med. 2006;21:884-887.
 - 39. Palepu A, **Cheng DM, Kim TW**, Nunes D, Vidaver J, **Alperen JK, Saitz R, Samet JH.** Substance abuse treatment and receipt of liver specialty care among persons coinfectd with HIV/HCV who have alcohol problems. J Subst Abuse Treat. 2006;31:411-417.
-

Publications – 2006

40. **Raj A, Cheng DM, Levison R, Meli S, Samet JH.** Sex trade, sexual risk and non-disclosure of HIV serostatus: findings from HIV-infected persons with a history of alcohol problems. *AIDS and Behav.* 2006;10:149-157.
 41. **Ramani S.** Best practices for bedside clinical teaching. Book chapter for the Japan Society of Medical Education publication "How to Teach and Learn the Skills for Residency Training", 2006.
 42. **Ramani S.** Tips for effective bedside teaching. A faculty development resource. *MedEdPORTAL* 2006, ID #220. Available from <http://www.aamc.org/mededportal>.
 43. **Ramani S.** Twelve tips to promote excellence in medical teaching. *Med Teacher.* 2006;28:19-23.
 44. **Ramani S, Gruppen L and Kachur EK.** Twelve tips to developing effective mentors. *Medical Teacher*, Vol. 28, No. 5, 2006, pp. 404–408.
 45. **Rose AJ, Stein MR, Arnsten JH, Saitz R.** Teaching internal medicine resident physicians about alcoholics anonymous: a pilot study of an educational intervention. *Sub Abuse.* 2006;27(3):5-11.
-

Publications – 2006

46. Rubin A, Migneault JP, Marks L, Goldstein E, Ludena K, **Friedman RH**. Automated telephone screening for problem drinking. J. Stud. Alcohol 2006; 67: 454-457.
 47. **Saitz R**, Svikis D, D'Onofrio G, Kraemer KL, Perl H. Challenges applying alcohol brief intervention in diverse practice settings: populations, outcomes and costs. Alc Clin Exp Res. 2006;30:332-338.
 48. **Saitz R**. Alcohol dependence: chronic care for a chronic disease. J Bras Psiquiatr 2005;4:268-9.
 49. **Saitz R**, Freedner N, Palfai TP, Horton NJ, **Samet JH**. The severity of unhealthy alcohol use in hospitalized medical patients. J Gen Intern Med. 2006; 21:381-385.
 50. **Samet JH**, Galanter M, Bridden C, Lewis D. Association for Medical Education and Research in Substance Abuse. Addiction. 2006;101:10-15.
 51. **Sherman BJ**, Gilliland G, **Speckman JL**, **Freund KM**. The effect of a primary care exercise intervention of rural women. Preventive Medicine 2006;44: 198-201.
-

Publications – 2006

- 52. **Sherman BJ**, Savage CR, Eddy KT, Blais MA, Deckersbach T, Jackson SC, Franko DL, Rauch SL, Herzog DB. Strategic memory in adults with anorexia nervosa: are there similarities to obsessive compulsive spectrum disorders? *Int J Eat Disord.* 2006;(6):468-476.
 - 53. Shwartz M, **Ash AS**, Pekoz EA. Risk Adjustment and Risk-Adjusted Provider Profiles. *International Journal of Healthcare Technology and Management.* 2006;7 (1/2): 15-42.
 - 54. **Smith KL, Horton NJ, Saitz R, Samet JH.** Use of mini-mental state examination in recruitment for substance abuse research studies. *Drug Alc Depend.* 2006; 82:231-237.
 - 55. Stevens A, Migneault J, Fava J, **Friedman R, Farzanfar R.** Health Technology Questionnaire: Psychometric Properties of a Health Behavior Change Measure. Abstract. *Annals of Behavioral Medicine.* Annual meeting Supplement. 2006. Volume 31:S126.
 - 56. Velicer WF, **Friedman RH**, Fava JL, Gulliver SB, Keller S, Sun X, Ramelson H, Prochaska JO. Evaluating NRT and stage-based therapies in a population-based effectiveness trial. *Journal of Consulting and Clinical Psychology* 2006; 74: 1162-1172.
-

Publications – 2006

57. Williams EC, Kivlahan DR, **Saitz R**, Merrill JO, Achtmeyer CE, McCormick KA, Bradley KA. Readiness to Change in Primary Care Patients Who Screen Positive for Alcohol Misuse. Ann Fam Med 2006;4:213-20.
 58. Yano EM, Bastian LA, Frayne SM, Howell AL, Lipson RL, McGlynn G, Schnurr PP, **Seaver MR**, Spungen Am, Fihn SD. Toward a VA Women's Health Research Agenda: setting evidence-based priorities to improve the health and health care of women veterans. J Gen intern Med. 2006;(3):S93-101.
-

28 Current BUSM GIM Authors

- Alford DP
 - Ash AS
 - Battaglia TA
 - Berlowitz DR
 - Carr P
 - Cheng DM
 - Chuang CH
 - Crosby S
 - Farzanfar R
 - Friedman RH
 - Freund KM
 - Friedman RH
 - Hylek EM
 - Kim TW
 - Kressin NR
 - Lee JM
 - Liebschutz JM
 - Orlander JD
 - Paasche-Orlow MK
 - Pincus J
 - Ramani S
 - Rose AJ
 - Samet JH
 - Saitz R
 - Seaver MR
 - Sherman BT
 - Speckman JL
 - Wright J
-

Awards and Honors

- Adam Rose, MD
 - First Place, Clinical Science, Evans Research Day



BUSM Humanism Honor Society

Communication, Compassion, and Empathy

- David Battinelli
 - Sondra Crosby
 - Julien Dedier
 - Angela Jackson
 - Jane Liebschutz
 - James O'Connell
 - Suzanne Sarfaty
-

Awards

- Dan Alford, MD, MPH
 - National Nyswander Dole Award; American Association for the Treatment of Opioid Dependence
 - Frank Perna, PhD
 - Walter Peach Award; The Association of Applied Sport Psychology
 - Christine Phillips, MD
 - Dean's Recognition Award for Teaching
-

Commencement Speakers

- Chi Huang, MD
 - Boston University School of Medicine
- Rich Saitz, MD, MPH
 - Boston University, College of Arts and Sciences, Bachelor of Arts in Medical Science

Bob Witzburg Award for Outpatient GIM Teacher of the Year



Geoff Modest, MD

Appointments & Promotions

- Associate Professor:

- Jeffrey Greenwald, MD
- Jane Liebschutz, MD
- Angela Jackson, MD
- Subha Ramani, MD, MPH, MMEd

- Assistant Professor:

- Christine Phillips, MD
- Robert Sokolove, PhD
- Nila Radhakhrisnan, MD

- Instructor:

- Catherine Rich, MD

- Clinical Instructor:

- Theresa Lim, MD

- Adjunct Professor, MD

- Brian Hoffman, MD
-

Major New Faculty Roles

- Jay Orlander, MD
 - Associate Chief of Medicine, VA Boston Healthcare System
- Allen Gifford, MD
 - Associate Director, Bedford CHQOER VA New England Healthcare

2007 Employee Recognition Honorees

- Colleen LaBelle, RN — 15 Years
 - Dan Alford, MD, MPH — 10 Years
 - Wanda Turner — 10 Years
-

Welcomed Additions

- Alina Cheng Patwari to Debbie Cheng and Parth
 - Zain Aziz to Alok Kapoor and Elora
 - Jordan Thomas to Dave Battinelli and Kadi
 - Aleksander and Gabriel to Jeff Greenwald & Suzanne
 - Leyvi to Adam Rose and Joanne
 - Owen to Dave Halle and Karen
 - Oliver to Margaret Seaver and George
-

Nuptials

- Frank Perna to Courtney

Section of General Internal Medicine

Most Valuable Player Award



David Halle, MD

**Congratulations on all
Our Continued
Successes**

Thanks again for all the hard work!
